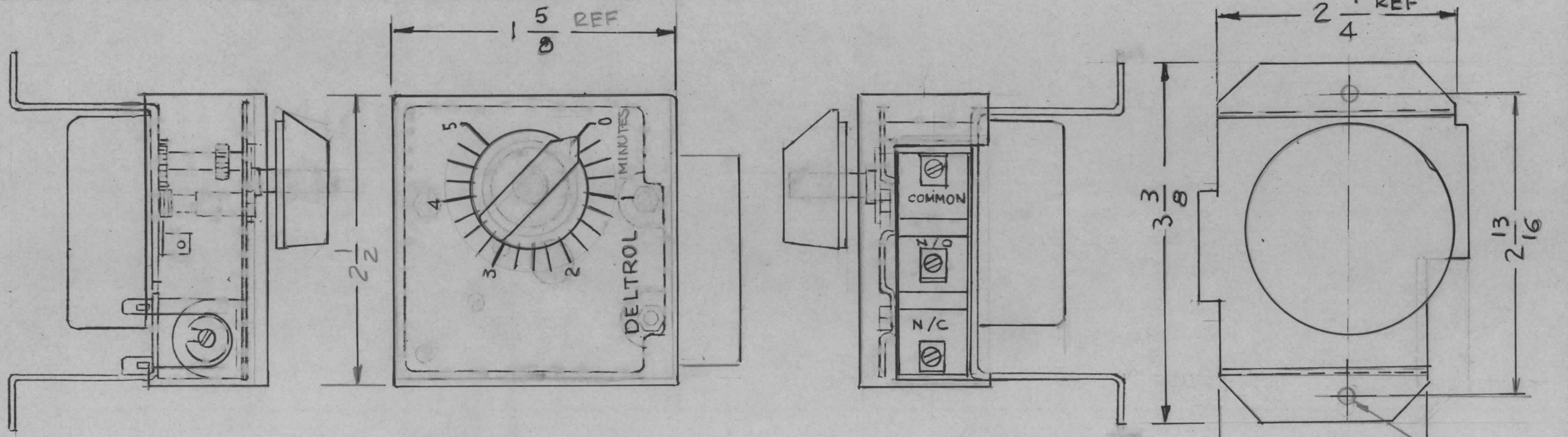


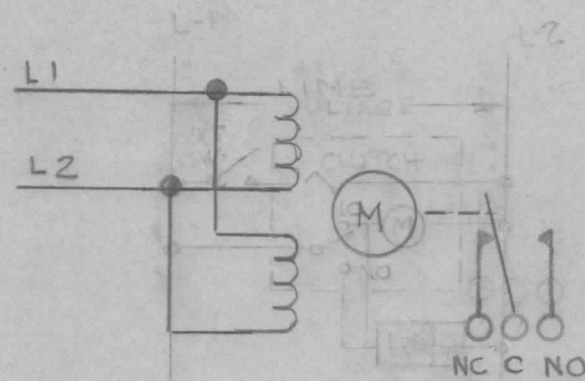
MFG SPECIFICATIONS:

MODEL: 601-126
 MOTOR 240V 60Hz,
 CLUTCH RATED 240VAC
 SWITCH RATED 10A, 240VAC
 TIME DELAY 5' MIN. (DELTROL DIV. DETROIT P/NO 46309-84)
 TIME DELAY 60" SECONDS (DELTROL DIV. DETROIT P/NO 46308-84)

REVISIONS							
E.M.N. NO	DRAFT	CHKD	ZONE	LTR	DESCRIPTION	DATE	APPROVED
				Ø	ORIGINAL RELEASE	8-25-82	



TMC PART NO	MFG PART NO
PO 341-1	DELTROL 46309-84
PO 341-2	DELTROL 46308-84



SCHEMATIC

REQ'D	ITEM	PART NUMBER	DESCRIPTION	SYM.
LIST OF MATERIAL				
THE TECHNICAL MATERIEL CORP. MAMARONECK, NEW YORK				
TIMER ADJUSTABLE				
SIZE	CODE IDENT. NO.	DWG NO.	ISSUE	
B	82679	PO 341-	Ø	

QTY / UNIT	MODEL USED ON	ASS'Y NO.
1	GPT-10K	
APPLICATION		
	CODE	

NOTICE TO PERSONS RECEIVING THIS DRAWING
 THE TECHNICAL MATERIEL CORPORATION claims proprietary right in the material disclosed hereon. This drawing is issued in confidence for engineering information only and may not be reproduced or used to manufacture anything shown hereon without permission from THE TECHNICAL MATERIEL CORPORATION to the user. This drawing is loaned for technical assistance and is subject to recall at any time.

UNLESS OTHERWISE SPECIFIED DIMENSIONS ARE IN INCHES AND INCLUDE CHEMICALLY APPLIED OR PLATED FINISHES		FINAL APPROVAL	DATE
DECIMALS	FRACTIONS	G.D.L.	3-4-82
.X ± .05	1/64		
.XX ± .01	ANGLES		
.XXX ± .005	0° - 30'		
MATERIAL			
FINISH			