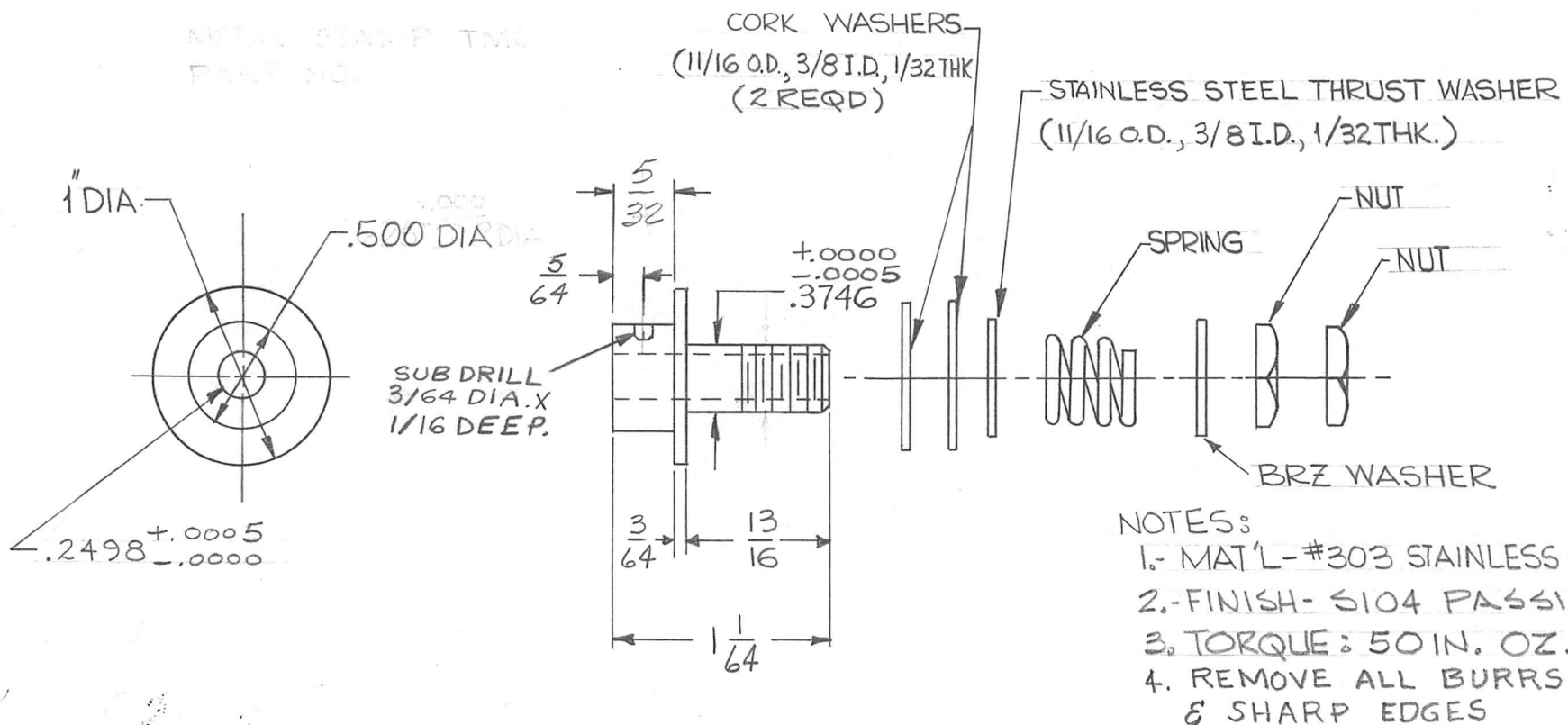


REQ. PER UNIT	USED ON		
	MODEL	ASS'Y. NO.	DATE
1	HFR-2	A3624	4-13-64
1	HFRR-2	A3625	9-11-64

PO-310 A

ORIGINAL PART TMC
PART NO.



- NOTES:
1. MAT'L - #303 STAINLESS STEEL
 2. FINISH - S104 PASSIVATE
 3. TORQUE: 50 IN. OZ.
 4. REMOVE ALL BURRS & SHARP EDGES

SYM	DESCRIPTION	DATE	CH. NO.	DRAFTS	CHECKER	ENG. APP.	REQ. ITEM	PART NO.	T. KRUY	DESCRIPTION	E3112B	SYMBOL
A	5/64 SUB DR. NOTE ADDED	11/5/65	15/01	A.V.V.								
Ø	ORIGINAL RELEASE FOR PRODUCTION	9-11-64			P.F.							
X2	TITLE WAS CLUTCH, SLIP	9-10-64			P.F.							
X1	5/32 WAS 1/4	4/14/64										
X	EXP. RELEASE	4/13/64										
UNLESS OTHERWISE SPECIFIED DIMENSIONS ARE IN INCHES AND INCLUDE CHEMICALLY APPLIED OR PLATED FINISHES							SCALE: #					
DECIMALS .X ± .05 .XX ± .01 .XXX ± .005							TOLERANCES					
FRACTIONS ± 1/64 ANGLES ± 0° 30'							CODE A					
3401-196 (N112-4)							SEE NOTES					
TYPE & TEMPER							HEAT TREAT. SPEC.					
DRAWN							CHECKED					
FINISH & SPEC. NO.							ELEC. DES. APP.					
MECH. DES. APP.							T. Kruy PO-310 A					