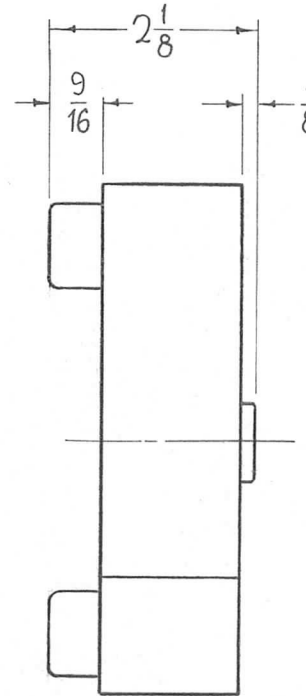
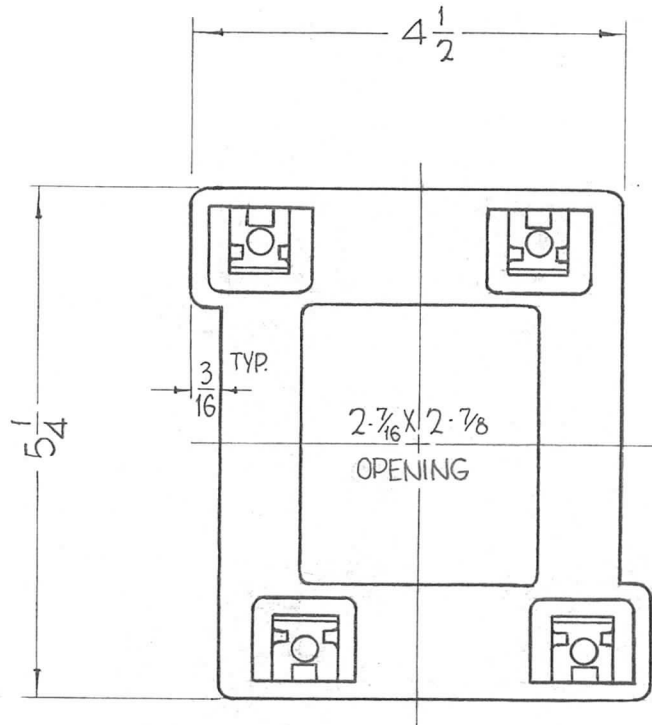


REQ. PER UNIT	USED ON			PO-296	0
	MODEL	ASS'Y. NO.	DATE		
1	GPT-200K	RL-147	10-31-63		



ELECTRICAL SPECIFICATIONS
 190-250 VAC
 50/60 CPS.

NOTE - ALL DIMENSIONS FOR REFERENCE ONLY.

REQ.	ITEM	PART NO.	F. BUDETTI				DESCRIPTION	SYMBOL
0	ORIG. RELEASE FOR PROD.	5-16-64	SRC				THE TECHNICAL MATERIEL CORP. MAMARONECK, NEW YORK	
XI	ELEC. SPEC WAS 208-220V 60 CYCLES	4-20-6A					COIL, ELECTRICAL RELAY, CONTACTOR MAGNETIC	
SYM	DESCRIPTION	DATE	CH. NO.	DRAFTS	CHECKER	ENG. APP.	MATERIAL	
UNLESS OTHERWISE SPECIFIED DIMENSIONS ARE IN INCHES AND INCLUDE CHEMICALLY APPLIED OR PLATED FINISHES		SCALE		1/2" = 1"				John C. Biele
DECIMALS .X ± .05 .XX ± .01 .XXX ± .005	TOLERANCES	FRACTIONS ± 1/64 ANGLES ± 0° 30'	CODE	S401-40(55-501493G3)				TYPE & TEMPER
							HEAT TREAT. SPEC.	
							DRAWN	
							CHECKED	
							FINAL APPROVAL	
							ELEC. DES. APP.	
							MECH. DES. APP.	
							PO-296	
							0	