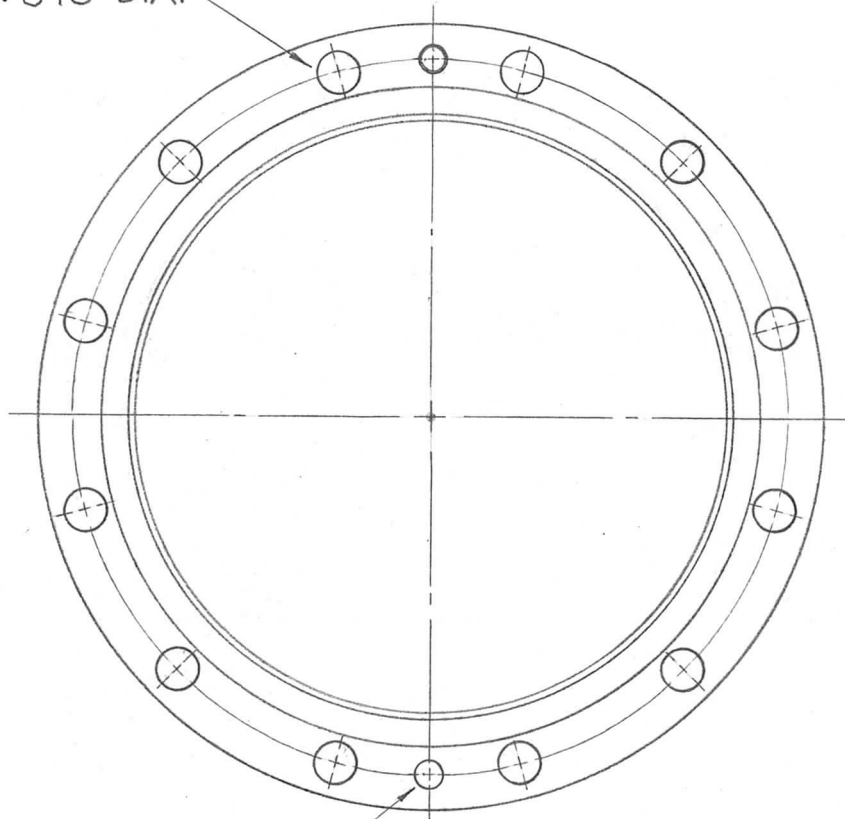
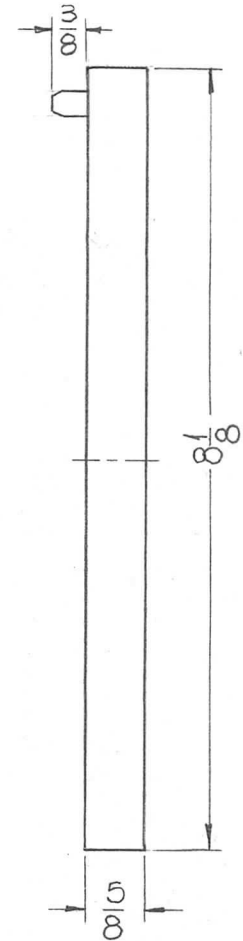


(12) 13/32 DIA. HOLES
EQUALLY SPACED
30° APART ON A
7.375 DIA.



1/4 DIA. HOLE ON A 7.375 DIA.



REQ. PER UNIT	USED ON			PO-288	0
	MODEL	ASS'Y. NO.	DATE		
1	TER-100K		9-24-63		

REQ. ITEM	PART NO.	F. BUDETTI	DESCRIPTION	SYMBOL
0	ORIGINAL RELEASE	5.16.64	JTB	
X	EXPERIMENTAL RELEASE	5/15/64		
UNLESS OTHERWISE SPECIFIED DIMENSIONS ARE IN INCHES AND INCLUDE CHEMICALLY APPLIED OR PLATED FINISHES		SCALE 1/2" = 1"		
DECIMALS .X ± .05 .XX ± .01 .XXX ± .005		FRACTIONS ± 1/64 ANGLES ± 0° 30'		
TOLERANCES		CODE		
TYPE & TEMPER		HEAT TREAT. SPEC.	DRAWN	CHECKED
FINISH & SPEC. NO.		ELEC. DES. APP.	MECH. DES. APP.	
		SRG		
		PO-288		0

THE TECHNICAL MATERIEL CORP.
MAMARONECK, NEW YORK
FLANGE R.F. TRANSMISSION LINE
6-1/8