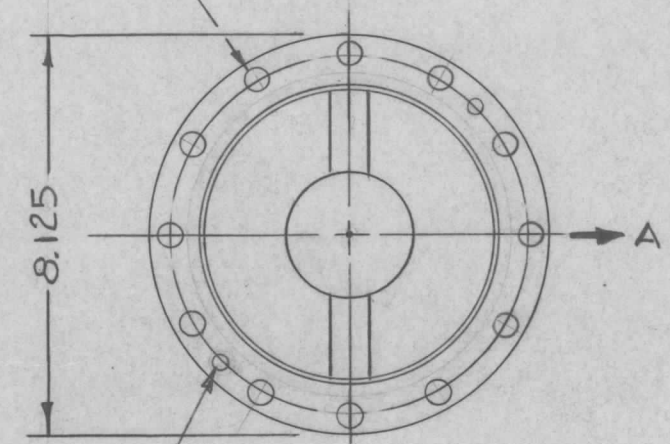


REVISIONS

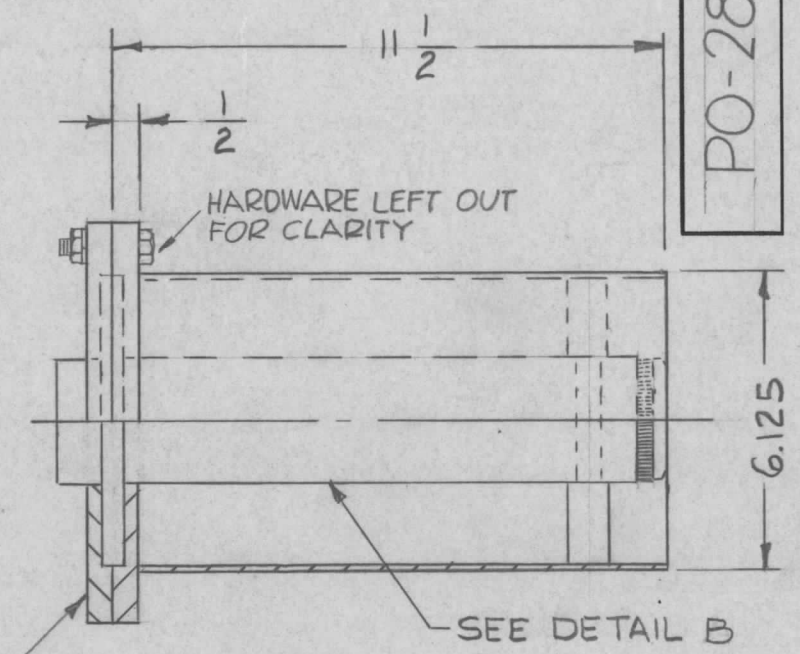
SYM	DESCRIPTION	DATE	E.M.N. NO.	DRAFT	CHKD	APPD
0	ORIGINAL RELEASE FOR PRODUCTION	5-27-64	0	A.M.		

PO-283

.406 DIA HOLE EQUALLY SPACED
30° APART ON A 7.375 DIA
(12 REQ'D.)



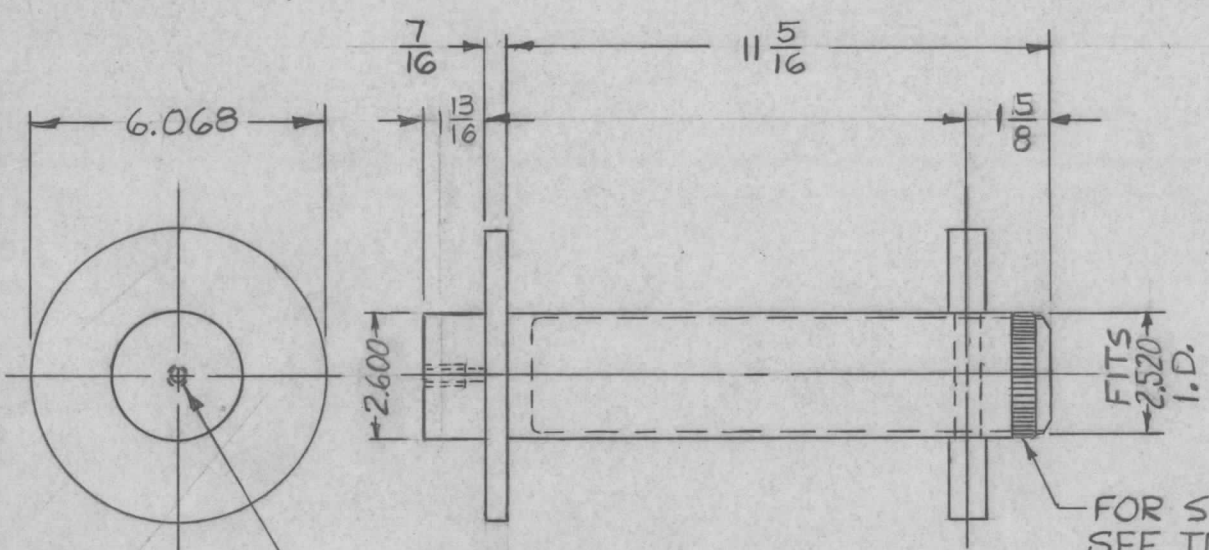
1/4 DIA ALIGNMENT HOLE
(2-REQ'D.)



TMC NO. PO-288
HALF SECTION A-A

SUPPLIED BY MFR. :
SCREW, MACH. — SCHH3716NR28 — 12 REQ'D.
WASHER, LOCK SPLIT — LSW 37HRN — 12 REQ'D.
NUT, HEX — NTH3716NR16 — 12 REQ'D.

NOTE :
ALL DIMENSIONS FOR REF. ONLY



3/8-16 TAP X 3/4 MIN DEPTH

DETAIL - B

FOR SPARE PART
SEE TMC NO. PO-289-2

REF. ID-292

1	GPT 200K	AX-397
Q'TY./UNIT	MODEL USED ON	ASS'Y. NO.
SCALE 1/4" = 1"	CODE C	5401-276 (P/O-601-083)

NOTES

THE CONTENTS OF THIS DRAWING ARE THE EXCLUSIVE PROPERTY OF THE TECHNICAL MATERIEL CORP. ITS UNAUTHORIZED USE OR REPRODUCTION IN WHOLE OR IN PART IS STRICTLY FORBIDDEN.

REQ'D.	ITEM	PART NUMBER	DESCRIPTION	SYMBOL
F. BUDETTI LIST OF MATERIAL				
MATERIAL			THE TECHNICAL MATERIEL CORP. MAMARONECK, NEW YORK	
FINISH			TITLE ADAPTOR, LINE RE. TRANSMISSION 6 1/8 (RIGHT)	
UNLESS OTHERWISE SPECIFIED DIMENSIONS ARE IN INCHES AND INCLUDE CHEMICALLY APPLIED OR PLATED FINISHES			DRAWN ATURSI	DATE 10-29-63
			CHECKED aa	DATE
			ELECT. DES. [Signature]	DATE
			MECH. DES. [Signature]	DATE 5/1/64
SHEET				REV. LTR.

PO-283 0