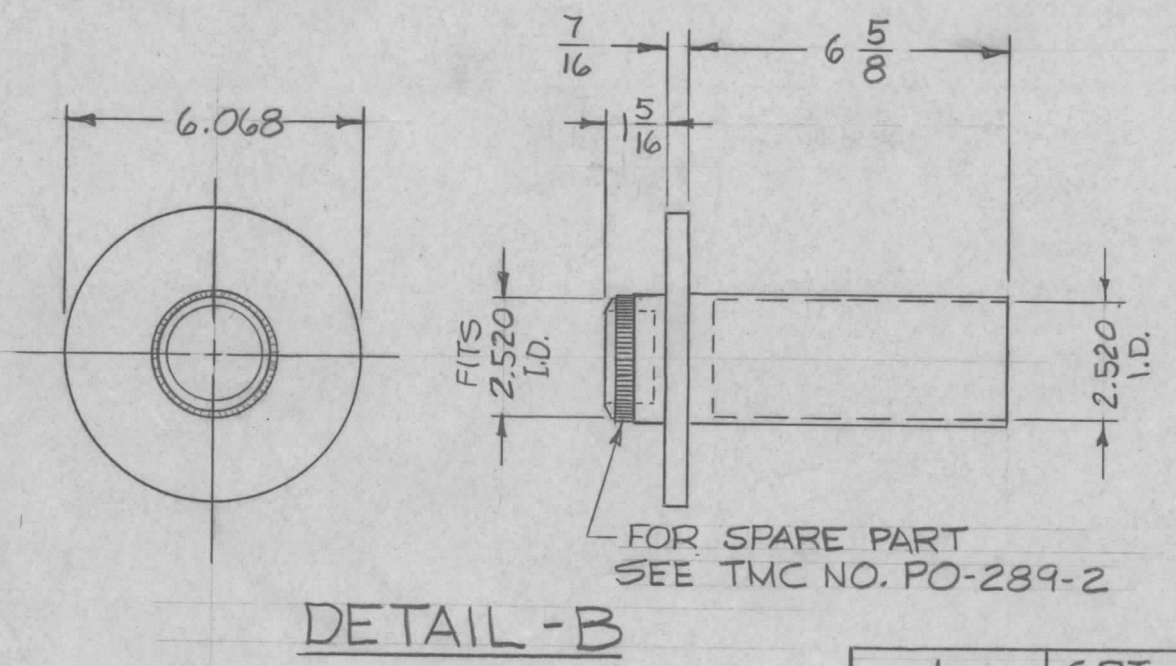
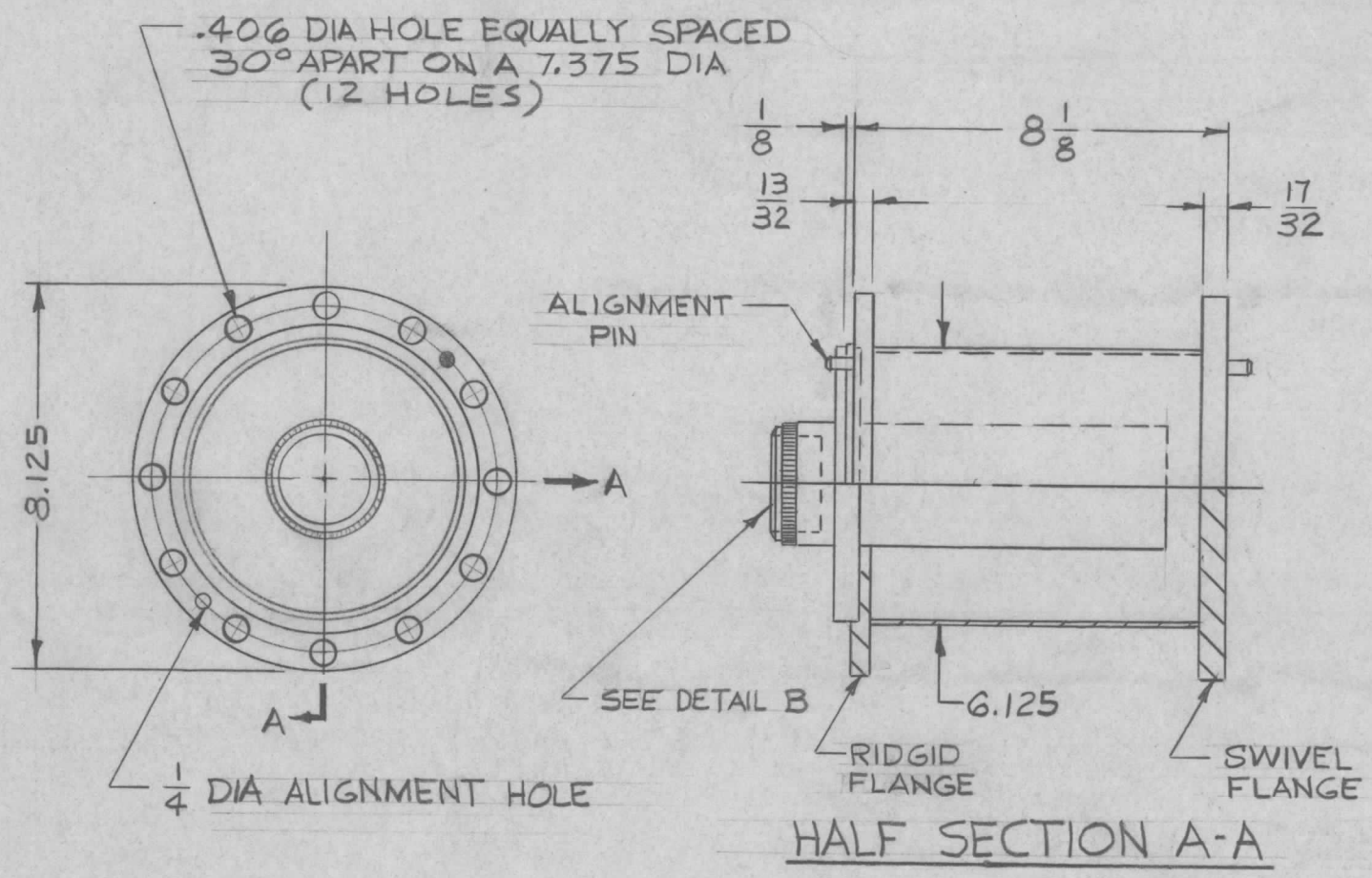


A
PO-282



REVISIONS					
SYM	DESCRIPTION	DATE	E.M.N. NO.	DRAFT	CHKD APPD
0	ORIGINAL RELEASE FOR PRODUCTION	5-27-64	0	A.M.	
A	MFR. HARDWARE REVISED. ADDED HARDWARE MATERIAL STAINLESS STEEL	3-28-67	18039	L.A.K.	<i>CB</i> <i>ah</i>

SUPPLIED BY MFR :
 SCREW, MACH. _____ HEX. 3/8-16, 1 3/4 LONG — 12-REQ'D.
 WASHER, LOCK SPLIT _____ 3/8 _____ 12-REQ'D.
 NUT, HEX _____ 3/8-16 _____ 12-REQ'D.
 HARDWARE MATERIAL: STAINLESS STEEL.

NOTE :
 ALL DIMENSIONS FOR REF ONLY

REF. ID-292

REQ'D.	ITEM	PART NUMBER	DESCRIPTION	SYMBOL
F. BUDETTI LIST OF MATERIAL				
MATERIAL		THE TECHNICAL MATERIEL CORP. MAMARONECK, NEW YORK		
FINISH		TITLE ADAPTOR, BULKHEAD LINE R.F. TRANSMISSION 6 1/8		
UNLESS OTHERWISE SPECIFIED DIMENSIONS ARE IN INCHES AND INCLUDE CHEMICALLY APPLIED OR PLATED FINISHES		DRAWN A TUESI	DATE 10-31-63	FINAL APPROVAL <i>Roe</i>
		CHECKED <i>aa</i>	DATE	
		ELECT. DES. <i>CB</i>	DATE	
		MECH. DES. <i>ae</i>	DATE 3/19/64	
				PO-282
				A
				REV. LTR.

1	GPT 200 K	AX-397
Q'TY./UNIT	MODEL USED ON	ASS'Y. NO.
SCALE 1/4=1"	CODE C	SA01-276(D/O 601-083)
THE CONTENTS OF THIS DRAWING ARE THE EXCLUSIVE PROPERTY OF THE TECHNICAL MATERIEL CORP. ITS UNAUTHORIZED USE OR REPRODUCTION IN WHOLE OR IN PART IS STRICTLY FORBIDDEN.		

NOTES