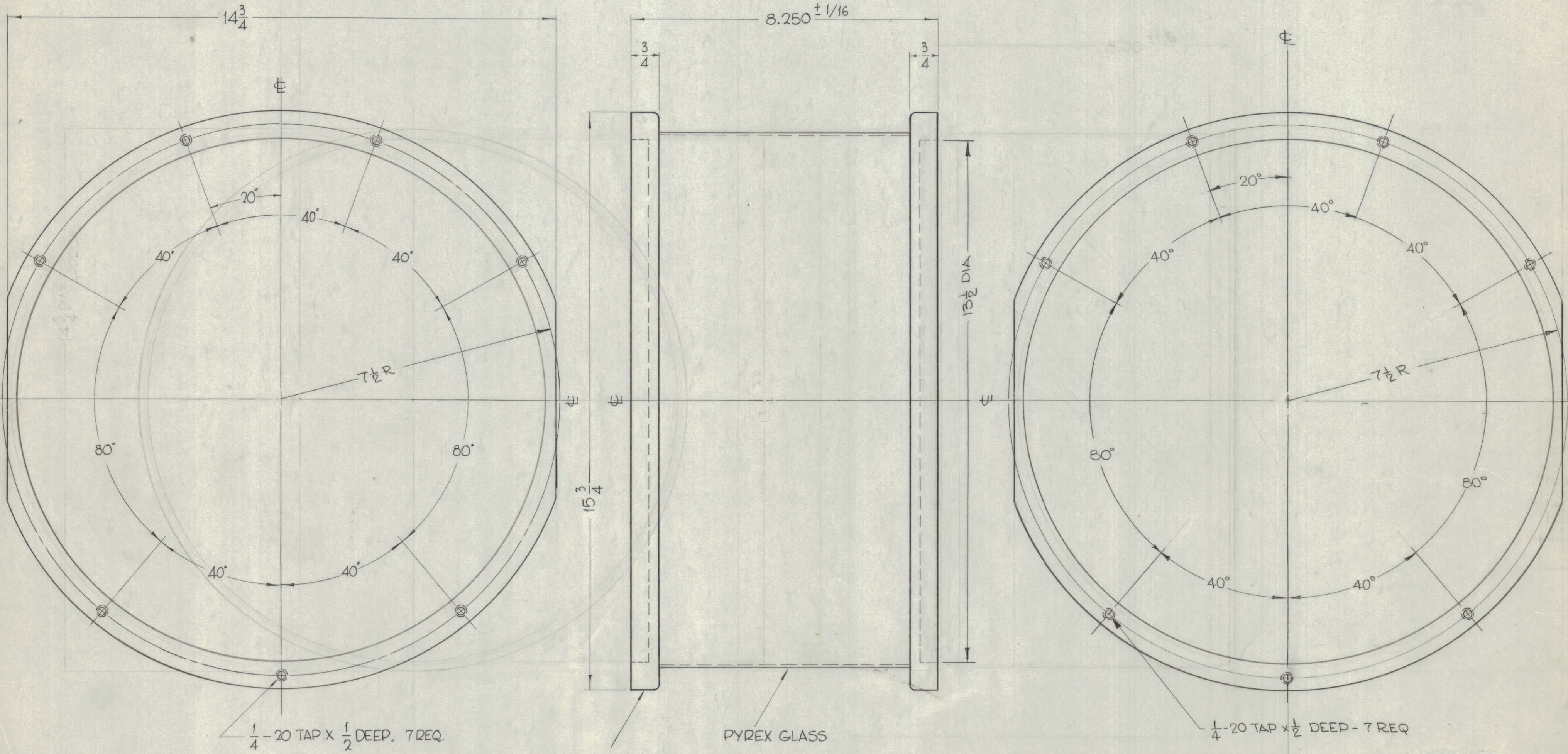


| REVISIONS | | | | | |
|-----------|-----|----------------------------|---------|------------|------|
| ZONE | SYM | DESCRIPTION | DATE | E.M.N. NO. | APPD |
| | 0 | ORIGINAL RELEASE FOR PROD. | 5/11/64 | | |



1/4-20 TAP X 1/2 DEEP, 7 REQ.

ALUMINUM RING TYPICAL BOTH ENDS
PYREX GLASS

1/4-20 TAP X 1/2 DEEP - 7 REQ

| REQ'D. | ITEM | PART NUMBER | DESCRIPTION | SYMBOL |
|---|---|--|------------------------------|--------------------------------------|
| F. BUDETTI LIST OF MATERIAL | | | | |
| MATERIAL | | THE TECHNICAL MATERIEL CORP. MAMARONECK, NEW YORK | | |
| FINISH | | TITLE INSULATOR, GLASS TUBE | | |
| UNLESS OTHERWISE SPECIFIED DIMENSIONS ARE IN INCHES AND INCLUDE CHEMICALLY APPLIED OR PLATED FINISHES | | DRAWN <i>John C. Biele</i> CHECKED <i>ga</i> | DATE <i>4/8/63</i> DATE | FINAL APPROVAL <i>RJC</i> DATE |
| DECIMALS .X ± .05 .XX ± .01 .XXX ± .005 | FRACTIONS ± 1/64 ANGLES ± 0° 30' | TOLERANCES | MECH. DES. <i>TR</i> DATE | SHEET PO-262 REV. LTR. |

| | | |
|------------|---------------|------------|
| 2 | GPT-200K | AX-393 |
| Q'TY./UNIT | MODEL USED ON | ASS'Y. NO. |
| SCALE # | CODE A | 5401-84 |

THE CONTENTS OF THIS DRAWING ARE THE EXCLUSIVE PROPERTY OF THE TECHNICAL MATERIEL CORP. ITS UNAUTHORIZED USE OR REPRODUCTION IN WHOLE OR IN PART IS STRICTLY FORBIDDEN.

NOTES