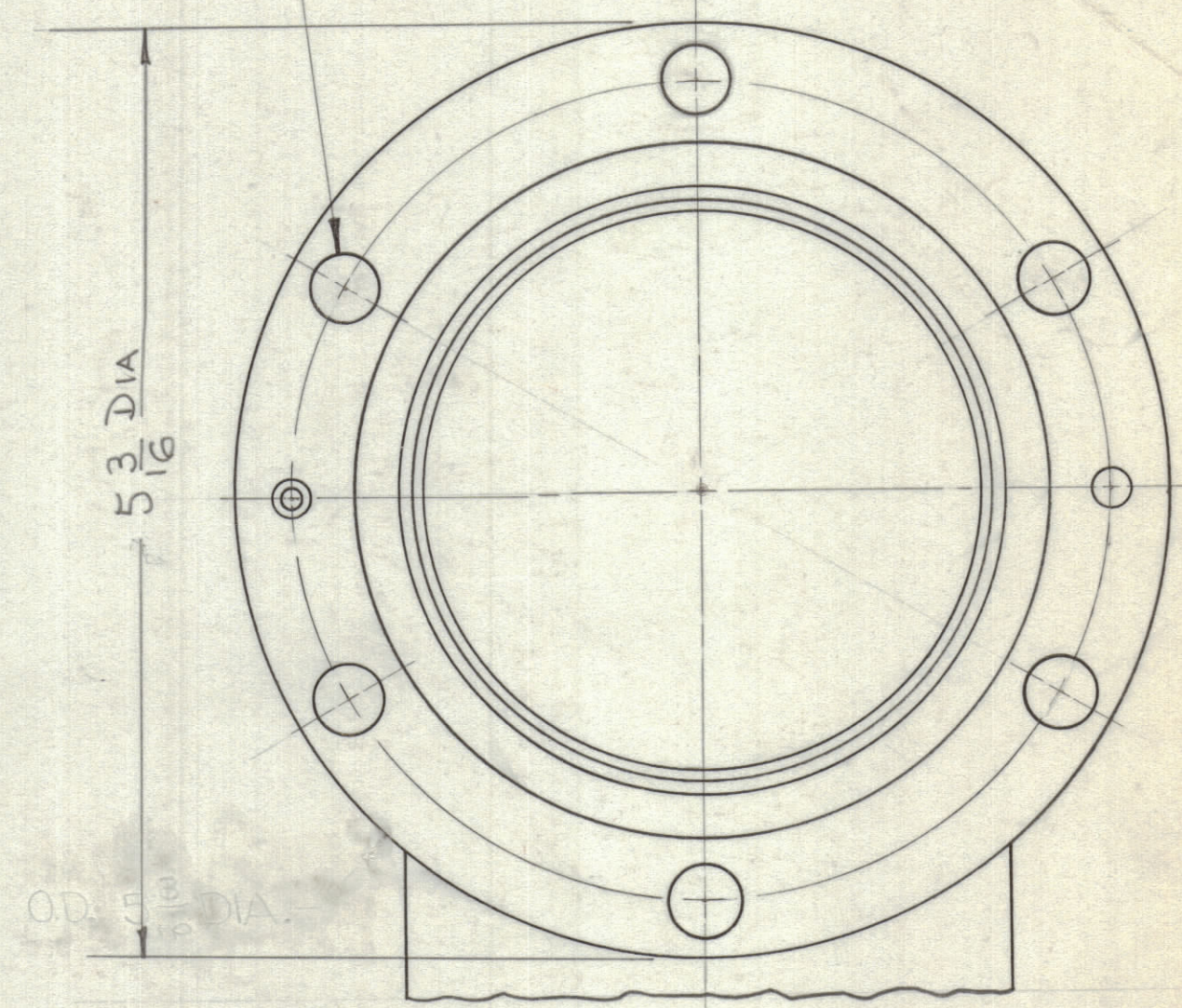
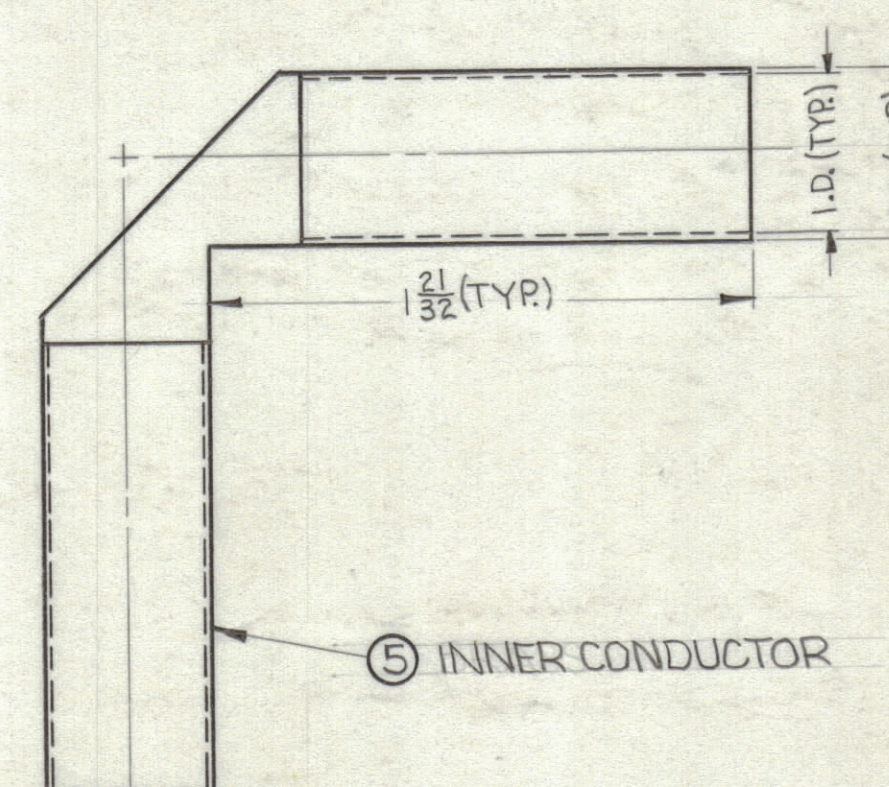
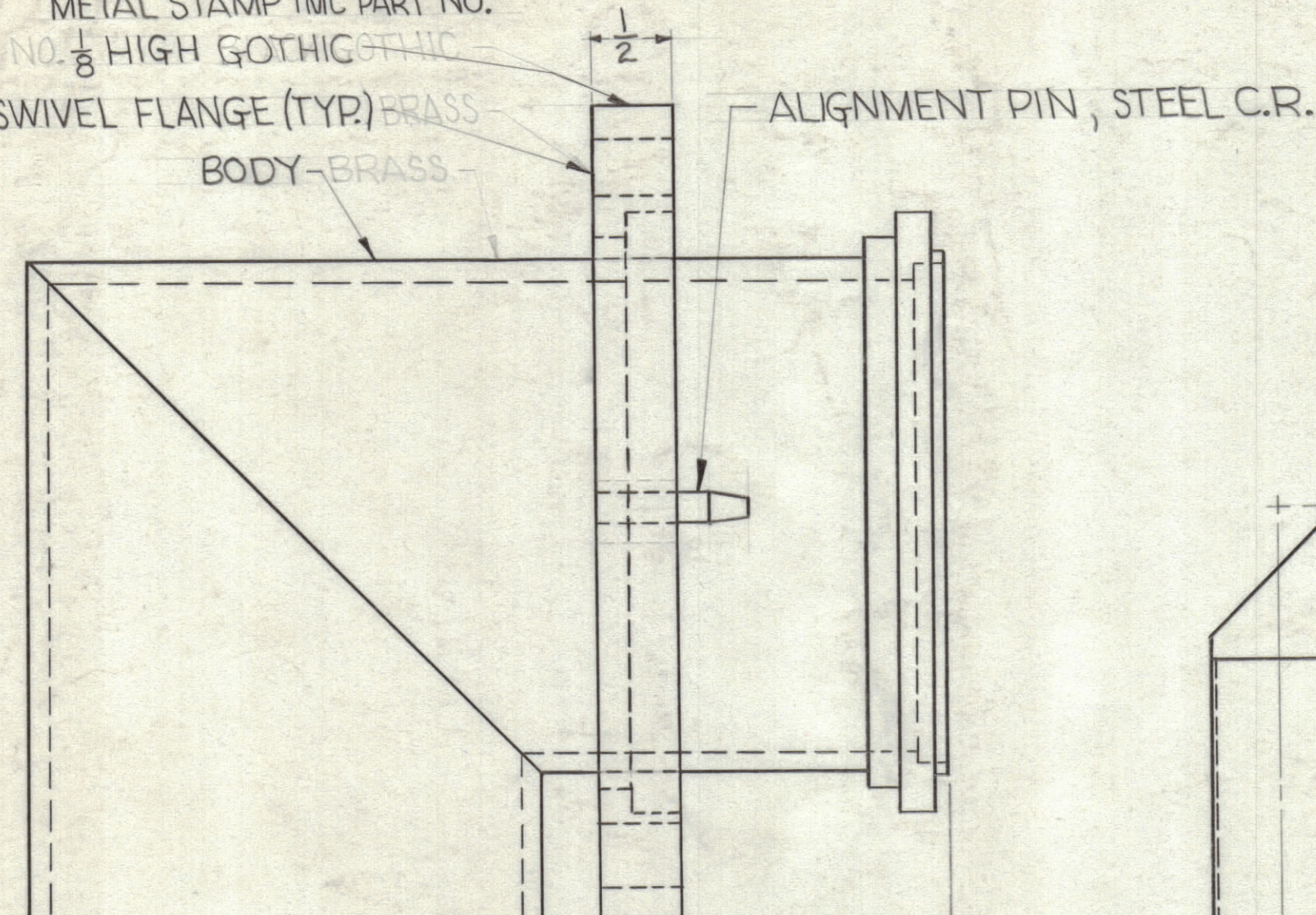


TMC PART NO.	ITEM 4	ITEM 5		MFR. PART NO.
		I.D.	O.D.	
PO-248-50	PO-	1.231	1.315	(S401-31)
PO-248-70	PO-			(S401-31)

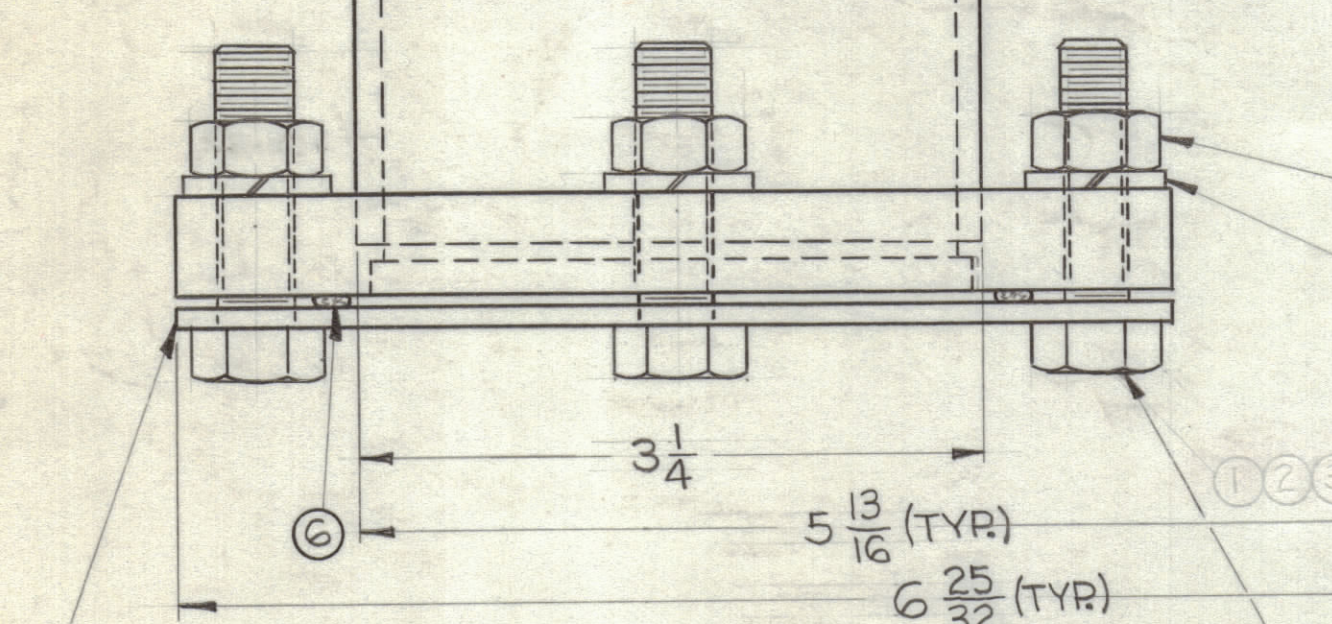
REVISIONS					
ZONE	SYM	DESCRIPTION	DATE	E.M.N. NO.	APPD

METAL STAMP TMC PART NO.
 METAL STAMP TMC NO. $\frac{1}{8}$ HIGH GOTHIC
 SWIVEL FLANGE (TYP.) BRASS
 BODY BRASS
 ALIGNMENT PIN, STEEL C.R.

$\frac{3}{32}$ DIA 6 HOLES EQUALLY SPACED ON $4\frac{3}{8}$ B.C.



FRONT VIEW SHOWN ONLY FOR SWIVEL FLANGE



NUT HEX. $\frac{3}{8}$ -16 UNC NAVAL BRONZE (TMC EQUIV. SEE ITEM 3)
 WASHER SPLIT $\frac{3}{32}$ x .094 THK. NAVAL BRONZE (TMC EQUIV. SEE ITEM 2)
 BOLT HEX. HD. $\frac{3}{8}$ -16 UNC x $1\frac{3}{4}$ LG. NAVAL BRONZE (TMC EQUIV. SEE ITEM 1)

⑦ PROTECTIVE COVER

SUPPLIED BY MANUFACTURER

NOTE:
 1- HARDWARE AND LOOSE PARTS MAY BE ASSEMBLED TO UNIT OR SUPPLIED LOOSE IN CLOTH (BEMUS) BAG.

DESCRIPTION	MATERIAL	FINISH
BODY	BRASS	BRASS PLATING
FLANGE	BRASS	BRASS PLATING
INNER CONDUCTOR	BRASS	BRASS PLATING

REQ'D	ITEM	PART NUMBER	DESCRIPTION	SYMBOL
2	7		FIBER BOARD	
2	6		"O"-RING, GASKET	
1	5	SEE CHART	INNER CONDUCTOR	
1	4	SEE CHART	INNER CONNECTOR	
6	3	NTH3716NR20	NUT, HEXAGON	
12	2	LWS37MRN	WASHER, LOCK SPLIT	
6	1	SCHH3716NH32	BOLT, MACHINE	

MANUFACTURE SUPPLIES

REQ'D	ITEM	PART NUMBER	DESCRIPTION	SYMBOL
LIST OF MATERIAL				
MATERIAL			THE TECHNICAL MATERIEL CORP.	
SEE CHART			MAMARONECK, NEW YORK	
FINISH			TITLE	
SEE CHART			CONNECTOR, ELECTRICAL ELBOW, MITERED, $3\frac{5}{8}$ EIA	
UNLESS OTHERWISE SPECIFIED DIMENSIONS ARE IN INCHES AND INCLUDE CHEMICALLY APPLIED OR PLATED FINISHES			DRAWN R. Luchin	DATE 6-20-62
DECIMALS .X ± .05 .XX ± .01 .XXX ± .005			CHECKED <i>[Signature]</i>	DATE 6-28-62
FRACTIONS ± 1/64 ANGLES ± 0° 30'			ELECT. DES. <i>[Signature]</i>	DATE 7/1/62
TOLERANCES			MECH. DES. <i>[Signature]</i>	DATE 7/1/62
			PO-248	
			SHEET	
			REV. LTR.	

PO-248		
Q'TY/UNIT	MODEL USED ON	ASS'Y. NO.
SCALE	CODE	
DO NOT SCALE		
THE CONTENTS OF THIS DRAWING ARE THE EXCLUSIVE PROPERTY OF THE TECHNICAL MATERIEL CORP. ITS UNAUTHORIZED USE OR REPRODUCTION IN WHOLE OR IN PART IS STRICTLY FORBIDDEN.		

NOTES

PO-248