

THE CONTENTS OF THIS DRAWING ARE THE EXCLUSIVE PROPERTY OF THE TECHNICAL MATERIEL CORP. ITS UNAUTHORIZED USE OR REPRODUCTION IN WHOLE OR IN PART IS STRICTLY FORBIDDEN.

REQ. PER UNIT

HFR-1

USED ON

MODEL

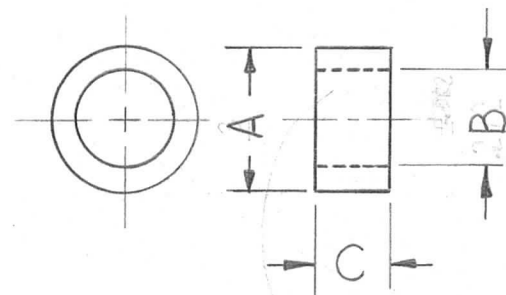
ASS'Y. NO.

DATE

7-26-62

PO-244

TMC PART NO	MFG. NO.	A	B	C
PO-244-1	S-20385	3/8	.272 ±.002	.100 ±.002
PO-244-2	S-20385 $\frac{S}{W}$	3/8	.272 ±.002	.208 ±.002



(REF. RADIO BATTERY CORPORATION)

REQ.	ITEM	PART NO.	DESCRIPTION	SYMBOL						
		KRUY	THE TECHNICAL MATERIEL CORP. MAMARONECK, NEW YORK							
		STOCK SIZE								
		ZYTEL	SPACER, DETENT ARM							
		MATERIAL								
SYM	DESCRIPTION	DATE	CH. NO.	DRAFTS	CHECKER	ENG. APP.	RUZZO	Drawn	Checked	Final Approval
UNLESS OTHERWISE SPECIFIED: DIMENSIONS ARE IN INCHES TOLERANCES ON FRAC. ± 1/64 DEC. ± .005 ANGLES ± 1/2°		SCALE: S401-113		MAXIMUM ALLOWABLE TOLERANCES HAVE BEEN DETERMINED AND ANY DEVIATIONS WILL BE CAUSE FOR REJECTION. REMOVE ALL BURRS AND SHARP EDGES						
		FINISH & SPEC. NO.		ELEC. DES. APP.		MECH. DES. APP.		TAK.		PO-244