

NOTICE TO PERSONS RECEIVING THIS DRAWING

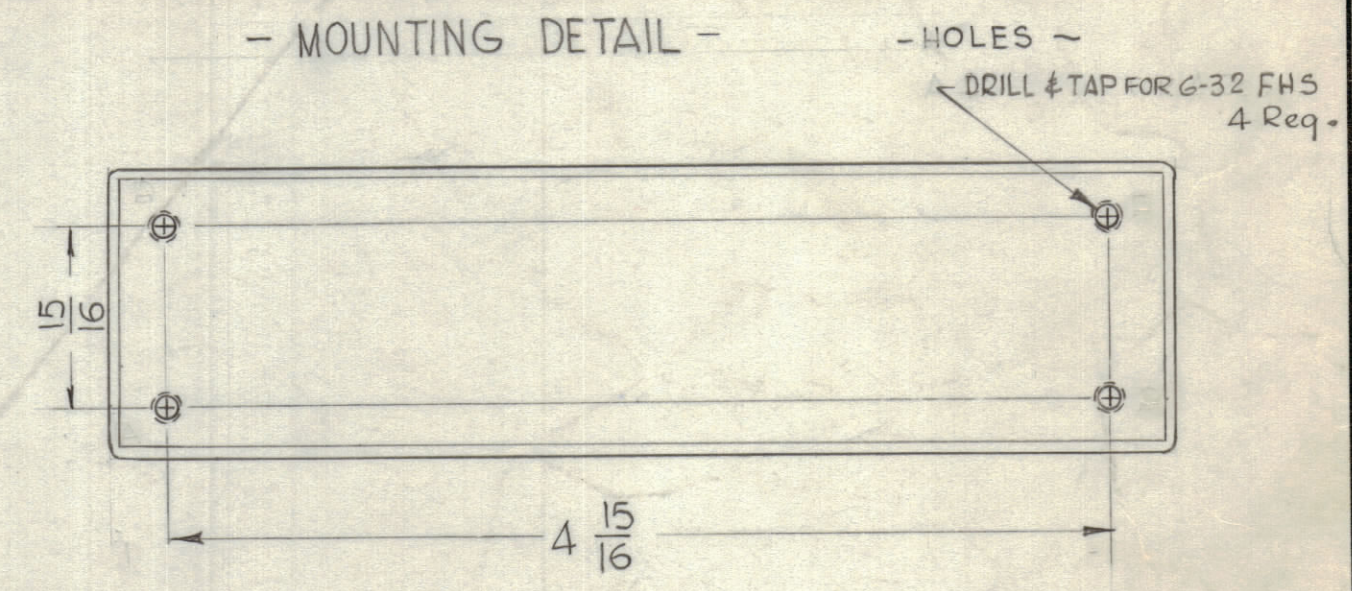
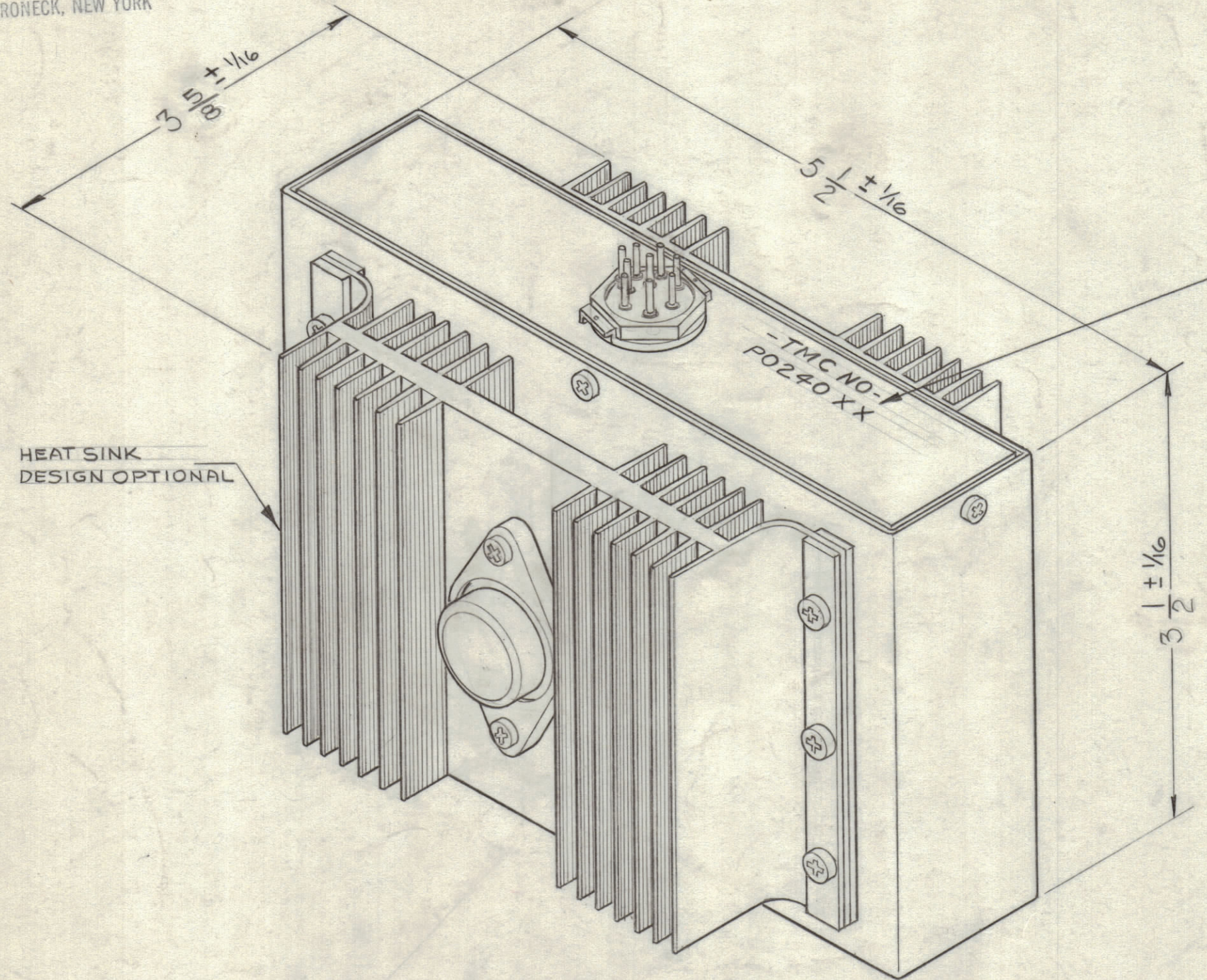
THE TECHNICAL MATERIEL CORPORATION claims proprietary right in the material disclosed hereon. This drawing is issued in confidence or engineering information only and may not be reproduced or used to manufacture any thing shown hereon without permission from THE TECHNICAL MATERIEL CORPORATION to the user. This drawing is loaned for mutual assistance and is subject to recall at any time.

Property of:
THE TECHNICAL MATERIEL CORPORATION
MAMARONECK, NEW YORK

IMPORTANT (FOR TMC USE)
FOR SPARE PARTS, THIS ITEM MUST BE REPLACED WITH THE SAME TMC CONTROL NO. AS WAS ORIGINALLY IN THE EQUIPMENT.
SEE ERPL-PO240 FOR REPLACEABLE PARTS

REVISIONS						
ZONE	SYM	DESCRIPTION	DATE	E.M.N. NO.	DRAFT	CHKD
E4, F5	A	DIMS. $3\frac{1}{2} \pm \frac{1}{16}$ WAS $3\frac{1}{2}$; $5\frac{1}{2} \pm \frac{1}{16}$ WAS $5\frac{1}{2}$	3-26-63	8658		
G7		DIM. $3\frac{5}{8} \pm \frac{1}{16}$ WAS $3\frac{3}{16}$				
E7, F3, H5	B	"HEAT SINK" MARKING "IMPORTANT" NOTES ADDED	7-29-64	11947		
G3, A5		TMC P/N CHART ADD., ON DIAGR. (PO240XX210) ADD.				
C7, D2		ON DIAGR. +32V MODIF. & RELOC., ON SPECS (HFR-1) DELE.				
D1, B1		ON SPECS "SEE CHART" & "OR EQUIV." ADD.				
A5		REEVES HOFFMAN - MODEL V-1250 DELE.				

TMC PART NO.	TMC CONTROL NO (TO BE MARKED)	MFRS. CODE	MUST BE USED WITH MATCHED ELEMENT NO.
PO240	PO240XX210	5401-210 NO. V1250	RR131XX210



— SPECIFICATIONS —
TO BE USED IN CONJUNCTION WITH PT. No. RR-131 (SEE CHART)
IN MODEL HFR-1 RECEIVER

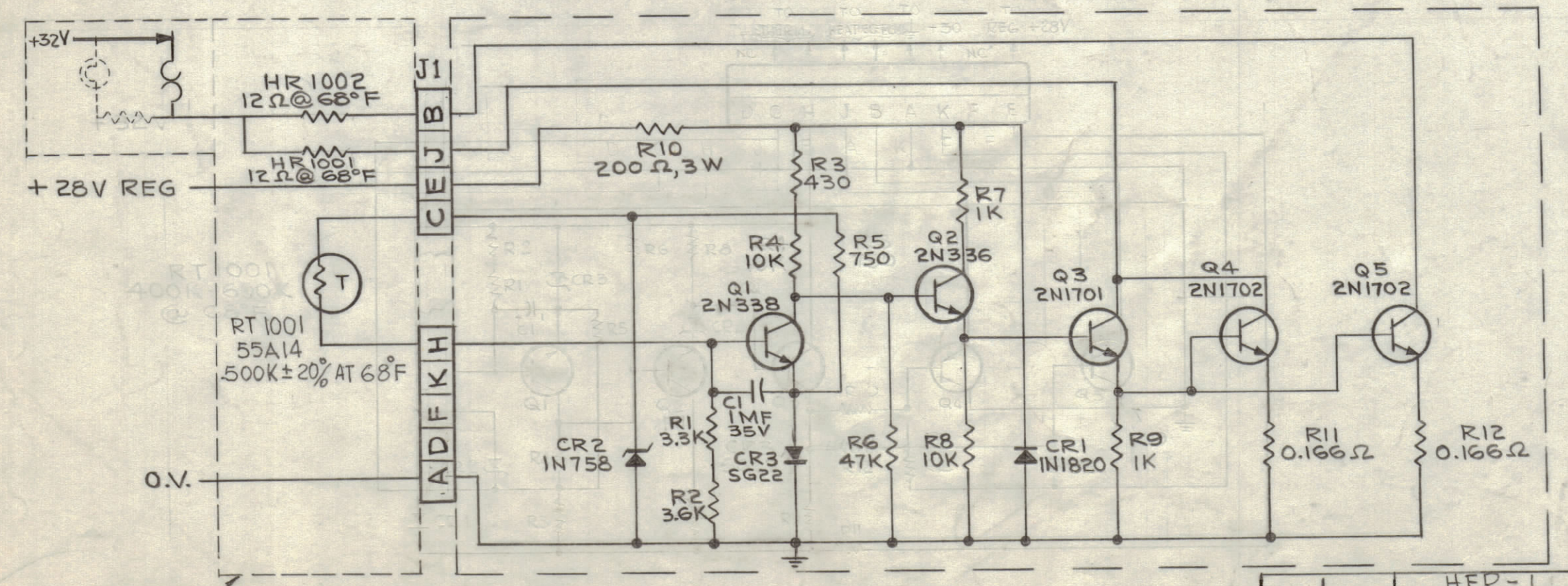
AVAILABLE POWER SOURCE:
+ 32V UNREGULATED
+ 28V REGULATED
4 AMPERES

TEMPERATURE REQUIREMENTS:
0° TO 50°C AMBIENT
72° TO 78°C INITIAL SETTING
± 1/2°C STABILITY

APPROX. 1HR. WARMUP TIME

FINISH:
TMC SMOOTH GREY ENAMEL CASE.
BLACK ANODIZED HEAT SINKS

CONNECTOR:
TMC # JJ-193-9P (AMPHENOL 126-219) OR EQUIV.



PT. NO. RR-131 ASS'Y LOCATED IN OVEN & SHOWN FOR REF. ONLY

CIRCUIT DIAGRAM (PO240XX210)

NOTES

UNLESS OTHERWISE SPECIFIED DIMENSIONS ARE IN INCHES AND INCLUDE CHEMICALLY APPLIED OR PLATED FINISHES

DECIMALS
.X ± .05
.XX ± .01
.XXX ± .005

FRACTIONS
± 1/64
ANGLES
± 0° 30'

TOLERANCES

THE CONTENTS OF THIS DRAWING ARE THE EXCLUSIVE PROPERTY OF THE TECHNICAL MATERIEL CORP. ITS UNAUTHORIZED USE OR REPRODUCTION IN WHOLE OR IN PART IS STRICTLY FORBIDDEN.

REQ'D.	ITEM	PART NUMBER	DESCRIPTION	SYMBOL
ANGER				
LIST OF MATERIAL				
MATERIAL			THE TECHNICAL MATERIEL CORP. MAMARONECK, NEW YORK	
FINISH			TITLE OVEN, PROPORTIONAL CONTROL	
DRAWN		DATE	FINAL APPROVAL	
G. De Lucia		8-6-62	BP	
CHECKED		DATE	DATE	
ELECT. DES.		DATE	REV. LTR.	
J. ANGER		11/15/62	PO-240 B	
MECH. DES.		DATE	SHEET	

PO-240 B