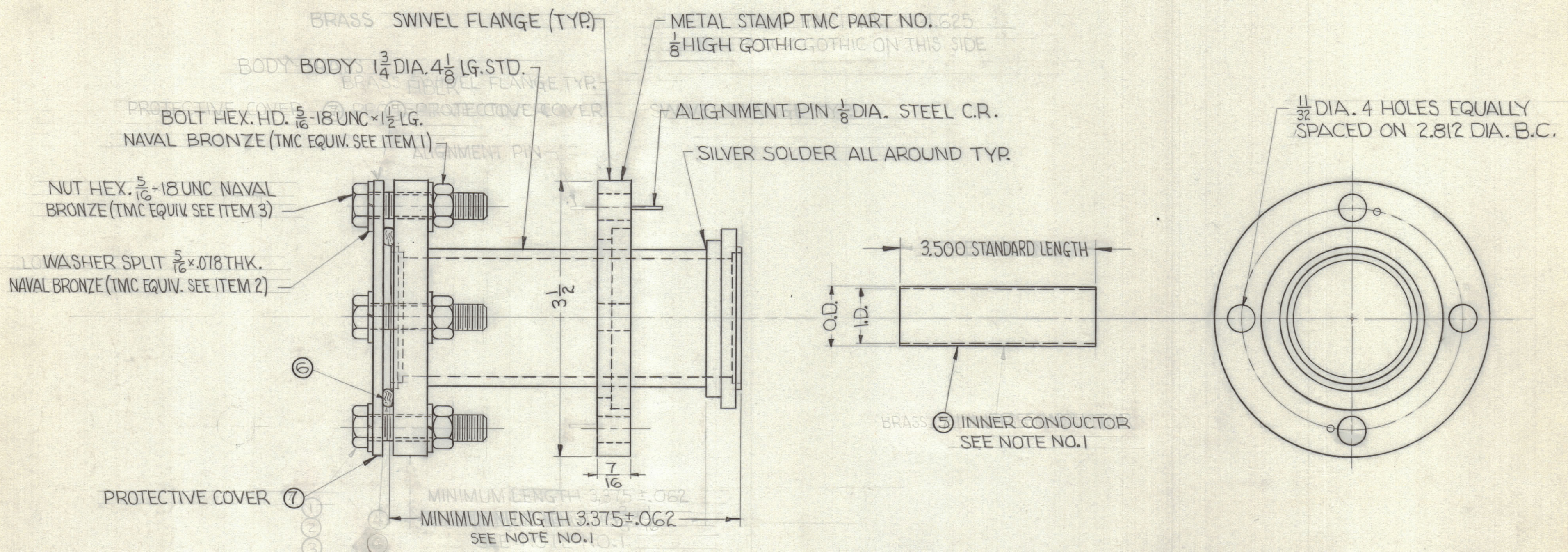


TMC PART NO.	ITEM 4	ITEM 5		MFR. PART NO.
		I.D.	O.D.	
PO-231-50-	PO-218-50	.588	.664	2615 (S401-70)
PO-231-70-	PO-218-70	.375	.430	(S401-70)

REVISIONS					
ZONE	SYM	DESCRIPTION	DATE	E.M.N. NO.	APPD



TMC PART NO. SHALL BE IN THE FOLLOWING FORM :

PO-231-50-4.625

BASIC NO. LENGTH EXPRESSED IN INCHES
IMPEDANCE 50Ω OR 70Ω (STANDARD LENGTH IS 4.625)

SUPPLIED BY MANUFACTURER

DESCRIPTION	MATERIAL	FINISH
BODY	BRASS	BRASS PLATING
FLANGE	BRASS	BRASS PLATING
INNER CONDUCTOR	BRASS	BRASS PLATING

NOTE :

1- REDUCE LENGTH OF INNER CONDUCTOR BY 1/8" OF OVERALL LENGTH OF CONNECTOR FOR PROPER FIT.

2- HARDWARE AND LOOSE PARTS MAY BE ASSEMBLED TO UNIT OR SUPPLIED LOOSE IN CLOTH (BEMUS) BAG.

REQ'D.	ITEM	PART NUMBER	DESCRIPTION	SYMBOL
2	7		FIBER BOARD	
2	6		"O"-RING	
1	5	SEE CHART	INNER CONDUCTOR	
1	4	SEE CHART	INNER CONNECTOR	
8	3	NTH3118NR16	NUT, HEXAGON	
16	2	LWS31HRN	WASHER, LOCK SPLIT	
8	1	SCHH3118NR24	BOLT, MACHINE	
8	3	NTH3118NR16	NUT, HEXAGON	
16	2	LWS31HRN	WASHER, LOCK SPLIT	
8	1	SCHH3118NR24	SCREW, MACHINE	

PRITCHARD		LIST OF MATERIAL	
MATERIAL SEE NOTE		THE TECHNICAL MATERIEL CORP. MAMARONECK, NEW YORK	
FINISH SEE NOTE		TITLE SPLICE CONNECTOR EIA 1 3/8 50Ω	
UNLESS OTHERWISE SPECIFIED DIMENSIONS ARE IN INCHES AND INCLUDE CHEMICALLY APPLIED OR PLATED FINISHES		DRAWN R. Luchini	DATE 5-23-62
DECIMALS .X ± .05 .XX ± .01 .XXX ± .005		CHECKED Hoe	DATE
FRACTIONS ± 1/64 ANGLES ± 0° 30'		ELECT. DES. MLO	DATE
TOLERANCES		MECH. DES.	DATE
PO-231		SHEET	
QTY./UNIT		REV. LTR.	
MODEL USED ON		DATE	
ASSY. NO.		DATE	
SCALE DO NOT SCALE		DATE	
CODE S40170 (2615)		DATE	

NOTES

PO-231 - IMP. - 4.625 (STANDARD LENGTH)

BASIC NO. 50 OR 70 LENGTH EXPRESSED IN INCHES.

THE CONTENTS OF THIS DRAWING ARE THE EXCLUSIVE PROPERTY OF THE TECHNICAL MATERIEL CORP. ITS UNAUTHORIZED USE OR REPRODUCTION IN WHOLE OR IN PART IS STRICTLY FORBIDDEN.

PO-231