

THE CONTENTS OF THIS DRAWING ARE THE EXCLUSIVE PROPERTY OF THE TECHNICAL MATERIEL CORP. ITS UNAUTHORIZED USE OR REPRODUCTION IN WHOLE OR IN PART IS STRICTLY FORBIDDEN.

REQ. PER UNIT

USED ON

MODEL

ASS'Y. NO.

DATE

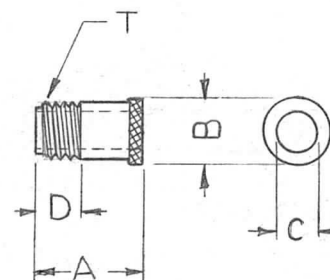
HFS-1

8-17-62

PO-230

A

TMC PART No.	MFRS No.	DIMENSIONS					FOR USE
		A	B	C	D	T	WITH TMC No.
PO-230-1	137-9 WITHOUT MOLDING	9/16	.324	.250	7/32	5/16-32	TS-159



SOCKET REF. TS-159
BULB REF. BI-110

MATERIAL - ALUMINUM
FINISH - BLACK ANODIZED

REQ.	ITEM	PART NO.	J. STRUMMER DESCRIPTION			SYMBOL	
			THE TECHNICAL MATERIEL CORP. MAMARONECK, NEW YORK				
			BUSHING, LAMP RETAINING				
			MATERIAL				
					G.D.L.		
					H.W.		
					BP		
UNLESS OTHERWISE SPECIFIED: DIMENSIONS ARE IN INCHES TOLERANCES ON FRAC. ± 1/64 DEC. ± .005 ANGLES ± 1/2°		SCALE: DO NOT SCALE (5401-153)		TYPE & TEMPER BLACK NICKEL		DRAWN JMA	
		MAXIMUM ALLOWABLE TOLERANCES HAVE BEEN DETERMINED AND ANY DEVIATIONS WILL BE CAUSE FOR REJECTION. REMOVE ALL BURRS AND SHARP EDGES		HEATTREAT. SPEC.		CHECKED JMA	
				FINISH & SPEC. NO.		ELEC. DES. APP. MECH. DES. APP.	
						PO-230 A	