

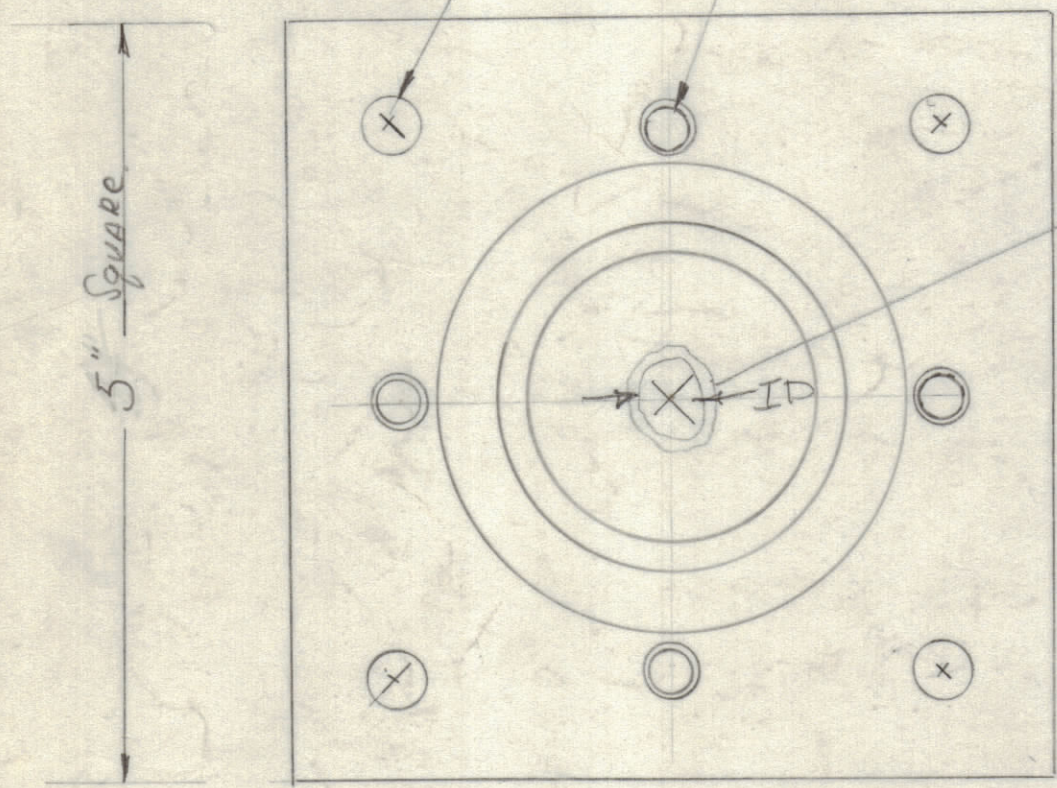
PD original

NOTICE TO PERSONS RECEIVING THIS DRAWING

THE TECHNICAL MATERIEL CORPORATION claims proprietary right in the material disclosed hereon. This drawing is issued in confidence for engineering information only and may not be reproduced or used to manufacture anything shown hereon without permission from THE TECHNICAL MATERIEL CORPORATION to the user. This drawing is loaned for mutual assistance and is subject to recall at any time.

Property of:  
THE TECHNICAL MATERIEL CORPORATION  
MAMARONECK, NEW YORK

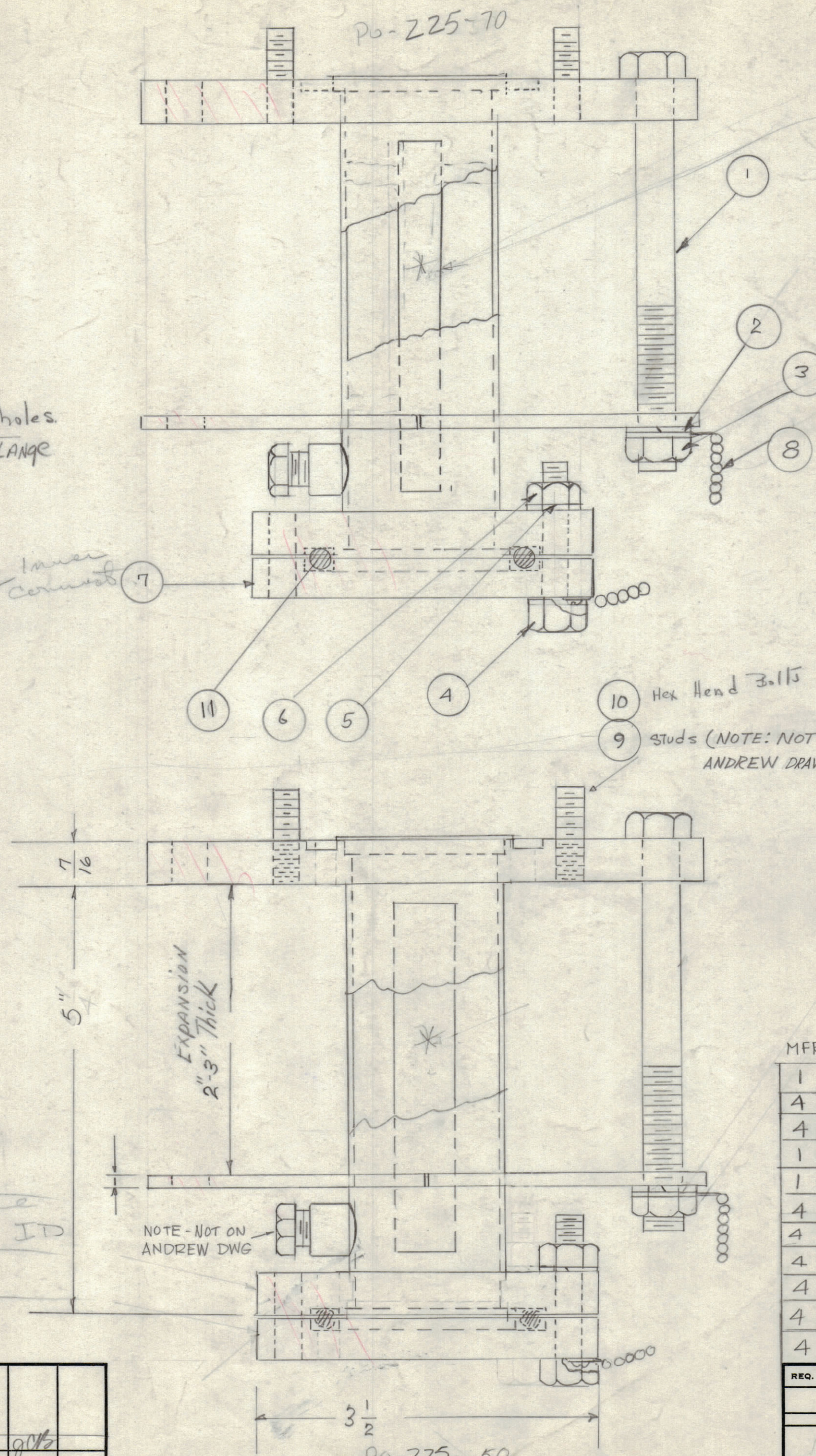
4 - 7/16 holes on 5" DIA  
4 - 5/16 F18 Tapped holes FOR 1 5/8" EIA FLANGE



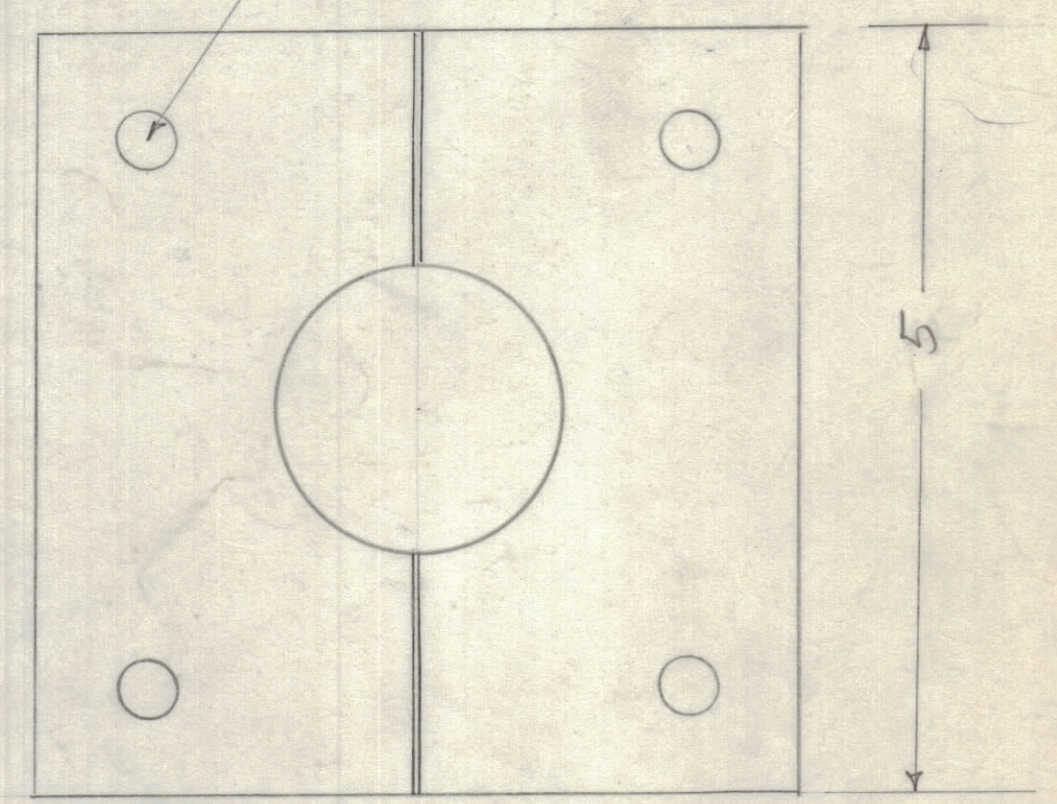
Top View

hole Req  
3 5/8 Plus 4 holes 7/16 on 4" Dia.  
See Top View

Part No	Impedance
PO-225-50	Nom. 50
PO-225-70	Nom. 75



4 - 7/16 holes on 5" DIA.



SPLIT adjustable Plate

items 1 thru 11 supplied by mfg.

MFR PART NO. - 26464

REQ. ITEM	PART NO.	DESCRIPTION	SYMBOL
1	11	✓ "O" Ring BUNA-N RUBBER	
4	10	✓ Hex Head Bolt - 5/16-18 - Long Sil BRG	
4	9	Stud. 5/16-18 - Long Sil BRG	
1	8	Band Chain Assy 5 1/2" Long	
1	7	Cover - BRASS	
4	6	Nut Hex 9/16-18 Sil BRG	
4	5	Lockwasher, SPLIT 5/16	
4	4	Hex head Bolts 5/16-18 x 1 1/2 Sil BRG	
4	3	Nut Hex 3/8-16 Sil BRG	
4	2	Lockwasher SPLIT silicone BRG	
4	1	Hex Head Bolt 1/2-16-3/8 Sil BRG	

NOTE - NOT ON ANDREW DWG

REQ. PER UNIT	MODEL	SECTION	ASS'Y. NO.	DATE

THE TECHNICAL MATERIEL CORP. MAMARONECK, NEW YORK		
Feed Thru Expansion 2" to 3" 1 5/8" EIA.		
DRAWN	CHECKED	FINAL APPROVAL
		PO-225
ELEC. DES. APP.	MECH. DES. APP.	SHEET OF
		A

SYM	ZONE	DESCRIPTION	DATE	CH. NO.	DRAFTS	CHECKER	ENG. APP.
A	#	DRAWING CLARIFIED	7-13-62	6912			

UNLESS OTHERWISE SPECIFIED:  
DIMENSIONS ARE IN INCHES  
TOLERANCES ON FRACTIONS ± 1/64 DECIMALS ± .005 ANGLES ± 1/2°

MAXIMUM ALLOWABLE TOLERANCES HAVE BEEN DETERMINED AND ANY DEVIATIONS WILL BE CAUSE FOR REJECTION. REMOVE ALL BURRS & SHARP EDGES