

TMC PART NO.	MFG. NO.	TYPE	DIMENSIONS					
			A	B	C	D	E	F
PO-185-1	FM1G	A	3-1/4	1/2	1-19/16	3/16	1-3/8	.062
PO-185-2	FM2	B	3-1/4	1-3/16	2-1/32	7/32	1-3/8	.032
PO-185-3	FM2B	B	3-1/4	3/4	2-1/32	7/32	1-3/8	.062
PO-185-4	FM2D	B	3-1/4	1-3/16	2-1/32	7/32	1-3/8	.062
PO-185-5	FM2S	A	3-1/4	1/2	2-1/32	7/32	1-3/8	.062
PO-185-6	FM3C	B	4-1/4	5/8	3-1/8	7/32	1-29/32	.062
PO-185-7	FM3B	B	4-1/4	1-1/2	3-1/8	7/32	1-29/32	.062
PO-185-8	FM4	B	5-7/16	1-3/4	4-1/8	7/32	2-1/2	.062
PO-185-9	FM4A	C	2	1	13/16	3/16	3/4	.032
PO-185-10	FM4B	C	2	1	7/8	3/16	3/4	.032
PO-185-11	FM4D	C	2	13/32	13/16	3/16	3/4	.032

FINISH CODE	FLANGE FINISH	TMC SPEC.	SCREW FINISH
S	SILVER PLATE & CLEAR IRIDITE		SILVER PLATE & CLEAR IRIDITE
N	NO FINISH		NICKEL

TMC PART* TO BE IN THE FOLLOWING FORM. (EXAMPLE)

PO-185-1 S
 BASIC TMC PART NO. FINISH DESIRED

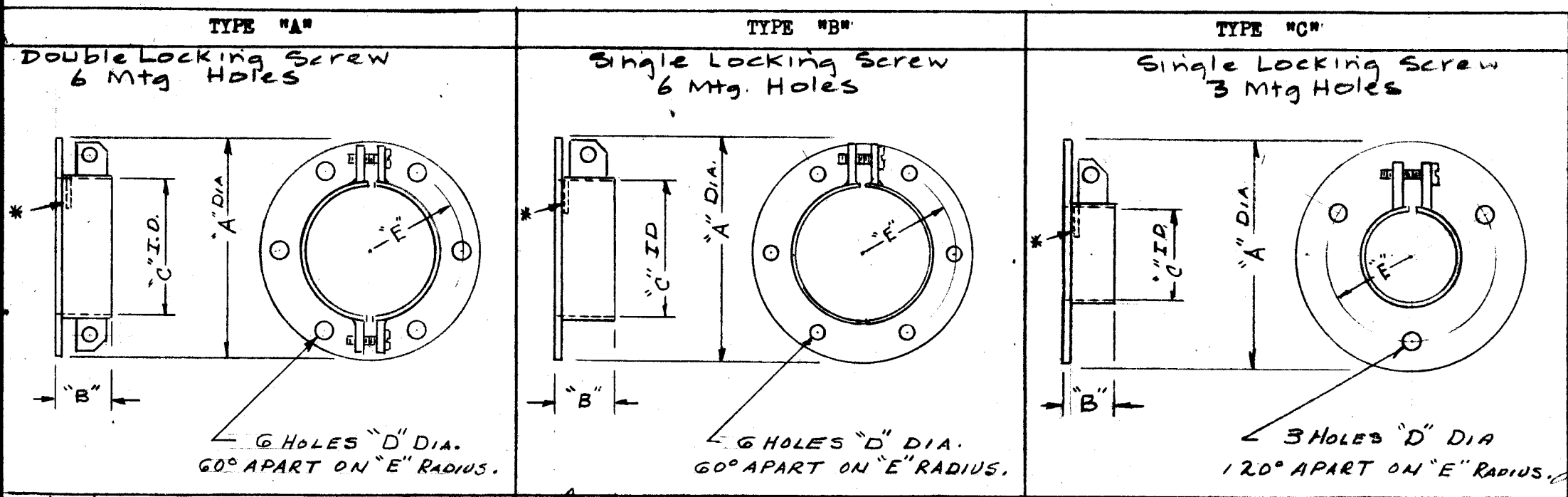
NOTE:

- SCREWS TO BE 10-32 X 1/2", ROUND HEAD, SLOT, BRASS.
 - SIZE OF EARS TO BE COMENSERATE WITH FLANGE SIZE AFFORD GOOD CLAMPING ACTION.
- * SLOT OPTIONAL

NOTICE TO PERSONS RECEIVING THIS DRAWING

THE TECHNICAL MATERIEL CORPORATION claims proprietary right in the material disclosed hereon. This drawing is issued in confidence for engineering information only and may not be reproduced or used to manufacture anything shown hereon without permission from THE TECHNICAL MATERIEL CORPORATION to the user. This drawing is loaned for mutual assistance and is subject to recall at any time.

Property of:
 THE TECHNICAL MATERIEL CORPORATION
 MAMARONECK, NEW YORK



ISSUE	ITEM	CHANGED FROM	DATE	CH. NO.	DRAFTS	CHECKER	ENG. APP.
E	2	TYPE WAS "B" ON PO-185-7	7-28-64	11968	SRG	[Signature]	[Signature]
D	1	PO-185-7 MFG NO. WAS FM3B	11-8-61	5815	GL	[Signature]	[Signature]
C	1	ON BUILD-UP - COLUMN "D" PO-185-2 AND 3 WERE 3/16	7-21-61	5321	G.D.L.	[Signature]	[Signature]
B	2	PO-185-11 ADDED	5/11/61	4861	HDE	[Signature]	[Signature]
A	2	GOLD PLATE DELETED					
A	1	TMC PART NO. ADDED	5/17/60	2270	CY	[Signature]	[Signature]

ISSUE	IT.	CHANGED FROM	DATE	CH. NO.	DRAFT	CHECK	ENG. APP.
H		PT. NO. -7 WAS "FM3B" & TYPE "A"	5/26/62	10157	[Signature]	[Signature]	[Signature]
G		OFHC ADDED TO MTL. B.L.K.	7/20/62	15056	[Signature]	[Signature]	[Signature]
F	3	FLANGE FINISH WAS FINISH	8/27/64	12209	[Signature]	[Signature]	[Signature]
F	2	SCREW FINISH COLUMN ADDED					
F	1	* SLOTS ADD. TO PICT. NOTE 1, 2, ADD					

REQ. ITEM	PART NO.	DESCRIPTION	SYMBOL
See "B" in TABLE		THE TECHNICAL MATERIEL CORP.	
STOCK SIZE		MAMARONECK, NEW YORK	
FLANGE: OFHC COPPER		FLANGE, VACUUM CAPACITOR	
EARS: BRASS			
MATERIAL			
TYPE & TEMPER	HEAT TREAT. SPEC.	DRAWN	CHECKED
FINISH & SPEC. NO.		ELEC. DES. APP.	MECH. DES. APP.

TOLERANCES
 DEC. DIM. ±
 FRAC. DIM. ±
 ANGULAR DIM. ±

SCALE: 5401-48

MAXIMUM ALLOWABLE TOLERANCES HAVE BEEN DETERMINED AND ANY DEVIATIONS WILL BE CAUSE FOR REJECTION. REMOVE ALL BURRS AND SHARP EDGES

STANDARD DRAWING

REQ. PER UNIT

MODEL PROJECT NO. ASS'Y. NO. DATE

USED ON