

Note - All Dimensions for Reference Only.

REQ. PER. UNIT

MODEL

USED ON

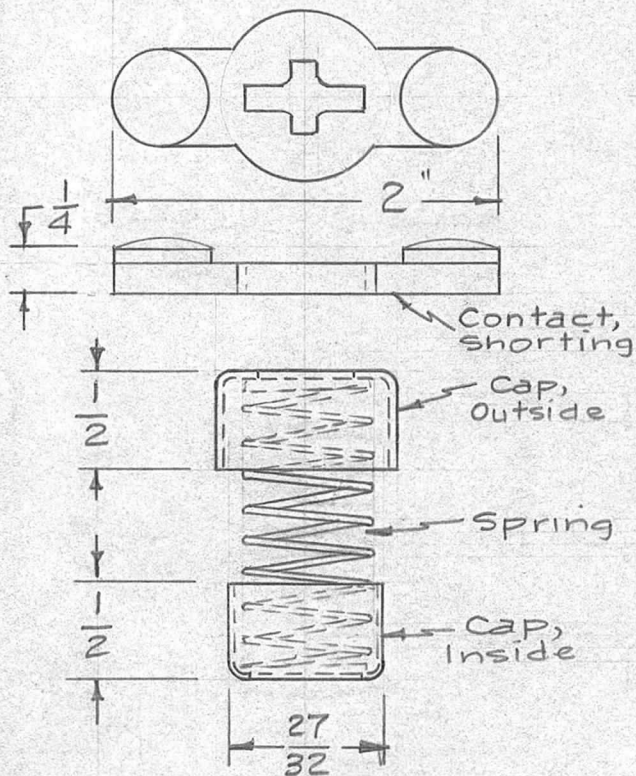
ASS'Y. NO.

DATE

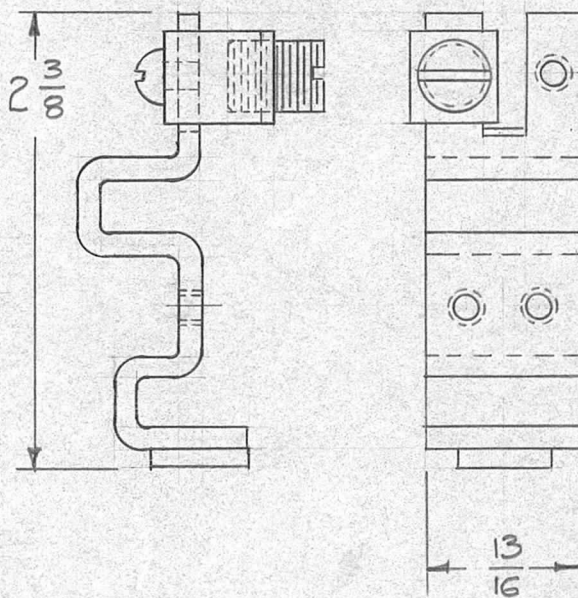
PO-183

B

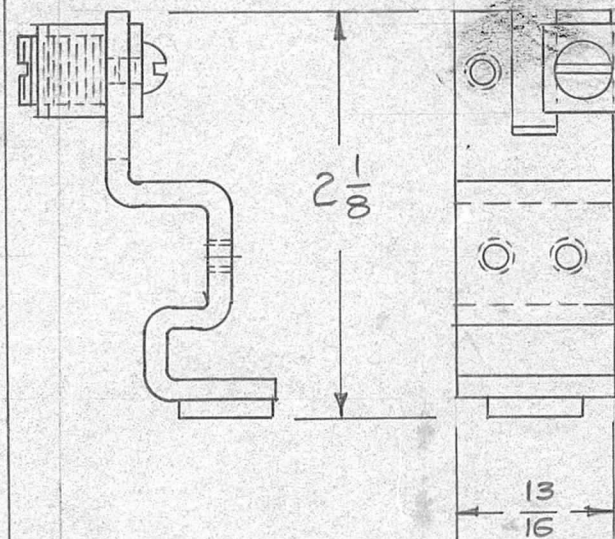
PO-183 CONTACT KIT CONSISTS OF :



MOVEABLE CONTACT ASS'Y.  
1 Each



LINE CONTACT  
1 Each



LOAD CONTACT  
1 Each

NO LONGER AVAILABLE  
REPLACE BY PO 355

Note - For Contact Kit Consisting of 3 ea. of Above - Use TMC Kit AX-176

								REQ. ITEM	PART NO.	DESCRIPTION	SYMBOL	
								//		THE TECHNICAL MATERIEL CORP.		
								STOCK SIZE		MAMARONECK, NEW YORK		
								//		RL-130 CONTACT KIT		
								MATERIAL		(SINGLE)		
B		NOTE NOT LONGER AVAILABLE ADD	8-7-91		GDL				16 7/159	JIS	APB	
A	1	MFG. CODE WAS 530	4-12-60	2115								
ISSUE	ITEM	CHANGED FROM	DATE	CH. NO.	DRAFTS	CHECKER	ENG. APP.					
TOLERANCES			SCALE: //				5401-32#540					
DEC. DIM. ±			MAXIMUM ALLOWABLE TOLERANCES HAVE BEEN DETERMINED AND ANY DEVIATIONS WILL BE CAUSE FOR REJECTION.									
FRAC. DIM. ±			REMOVE ALL BURRS AND SHARP EDGES									
ANGULAR DIM. ± ONLY												
								TYPE & TEMPER	HEATTREAT. SPEC.	DRAWN	CHECKED	FINAL APPROVAL
								//				PO-183
								FINISH & SPEC. NO.		ELEC. DES. APP	MECH. DES. APP	B