

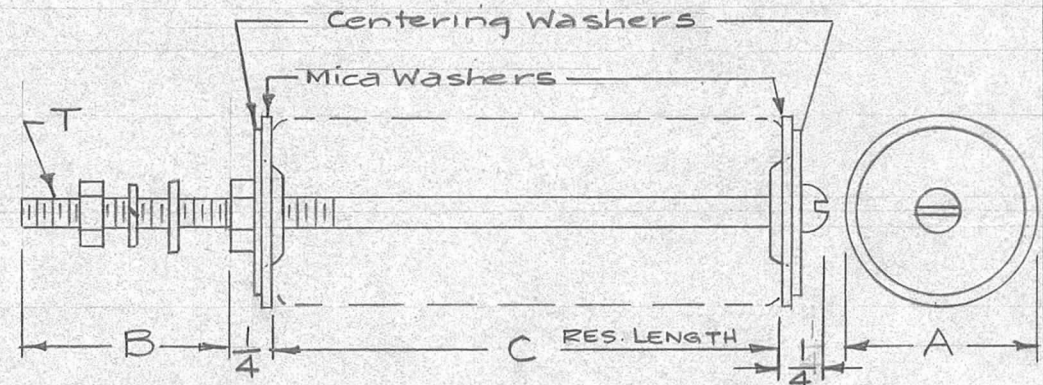
STANDARD DRAWING

REQ. PER UNIT	USED ON		
	MODEL	ASS'Y. NO.	DATE
			PO-159

TMC NO.	MFG. NO.	MFG. CORE TYPE	DIM.		DIM. "C" RESISTOR LENGTH	"T" (THREADS)	RESISTOR I. D.	USED WITH T.M.C. RESISTOR TYPE
			"A"	"B"				
PO-159-1	750	Z	15/32	3/4	1"	8-32	7/32	RW-107
PO-159-2	750	Z	15/32	3/4	1-3/4"	8-32	7/32	RW-109, RA-108(10W)
PO-159-3	764	A	3/4	1-1/16	2"	8-32	29/64	RW-111, RA-108(25W)
PO-159-4	763	T	3/4	15/16	2"	8-32	25/64	RW-110
PO-159-5	765	B	1	1-1/16	4-1/2"	8-32	17/32	RW-105, RA-108(50W)
PO-159-6	765	B	1	1-1/16	6-1/2"	8-32	17/32	RA-108(80W)
PO-159-7	767	D	1-3/8	1-1/16	6-1/2"	10-32	3/4	RA-108(100W)
PO-159-8	767	D	1-3/8	1-1/16	8-1/2"	10-32	3/4	RW-117, RA-108(160W)
PO-159-9	767	D	1-3/8	1-1/16	10-1/2"	10-32	3/4	RW-116, RA-108(200W)

Note - Mfg. Will Supply Ass'y. as shown, Consisting of:

- 1 ea. Screw
- 1 ea. Flat washer
- 1 ea. Split Washer
- 2 ea. Hex Nuts
- 2 ea. Mica Washers
- 2 ea. Centering Washers



REF - WARD LEONARD ELECTRIC CO. 63743 MIL CODE See TMC NS-124 for Porcelain Type

ISSUE	ITEM	CHANGED FROM	DATE	CH. NO.	DRAFTS	CHECKER	ENG. APP.
TOLERANCES			SCALE:				
DEC. DIM. ±			MAXIMUM ALLOWABLE TOLERANCES HAVE BEEN DETERMINED AND ANY DEVIATIONS WILL BE CAUSE FOR REJECTION. REMOVE ALL BURRS AND SHARP EDGES				
FRAC. DIM. ±							
ANGULAR DIM. ±							

REQ. ITEM	PART NO.	DESCRIPTION	SYMBOL
THE TECHNICAL MATERIEL CORP.			
MAMARONECK, NEW YORK			
BOLT ASS'Y., RESISTOR MTG.			
MATERIAL			
16 11/32			
TYPE & TEMPER	HEAT TREAT. SPEC.	DRAWN	CHECKED
FINISH & SPEC. NO.		ELEC. DES. APP.	MECH. DES. APP.
			PO-159