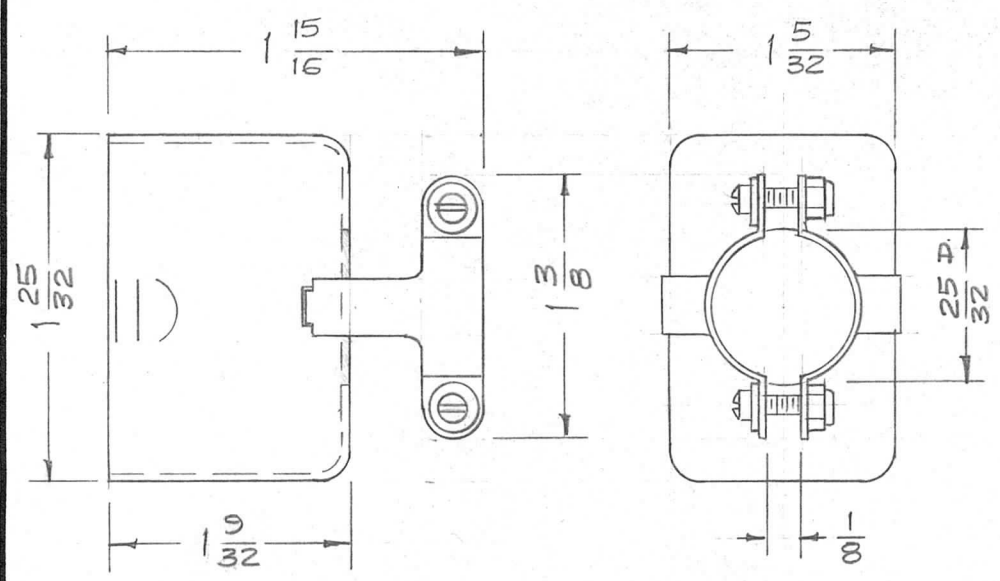
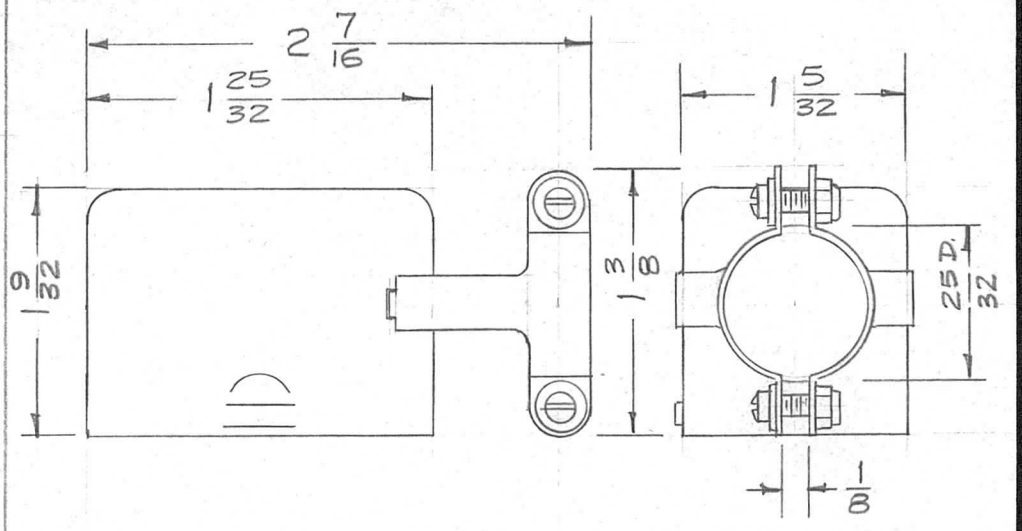


| | | | | |
|---------------|---------|------------|------|--------|
| REQ. PER UNIT | USED ON | | | PO-150 |
| | MODEL | ASS'Y. NO. | DATE | |



TMC NO. PO-150-1 (MFG. NO. DPX-CG 25/32 STRAIGHT) 20745



TMC NO. PO-150-2 (MFG. NO. DPX-CG 25/32 90°) 20745-1

Ref- CANNON ELECTRIC CO.

| ISSUE | ITEM | CHANGED FROM | DATE | CH. NO. | DRAFTS | CHECKER | ENG. APP. |
|----------------|------|--------------|--|---------|--------|---------|-----------|
| TOLERANCES | | | SCALE: | | | | |
| DEC. DIM. ± | | | MAXIMUM ALLOWABLE TOLERANCES HAVE BEEN DETERMINED AND ANY DEVIATIONS WILL BE CAUSE FOR REJECTION. REMOVE ALL BURRS AND SHARP EDGES | | | | |
| FRAC. DIM. ± | | | | | | | |
| ANGULAR DIM. ± | | | | | | | |

| REQ. ITEM | PART NO. | DESCRIPTION | SYMBOL |
|--------------------|----------|--|-----------------|
| | | THE TECHNICAL MATERIEL CORP. MAMARONECK, NEW YORK | |
| STOCK SIZE | | SHELL, CONNECTOR (for PL-160) | |
| MATERIAL | | | |
| TYPE & TEMPER | | 16 5/2/58 | A.S.J. |
| HEAT TREAT. SPEC. | | DRAWN | CHECKED |
| FINISH & SPEC. NO. | | ELEC. DES. APP. | MECH. DES. APP. |
| | | | PO-150 |