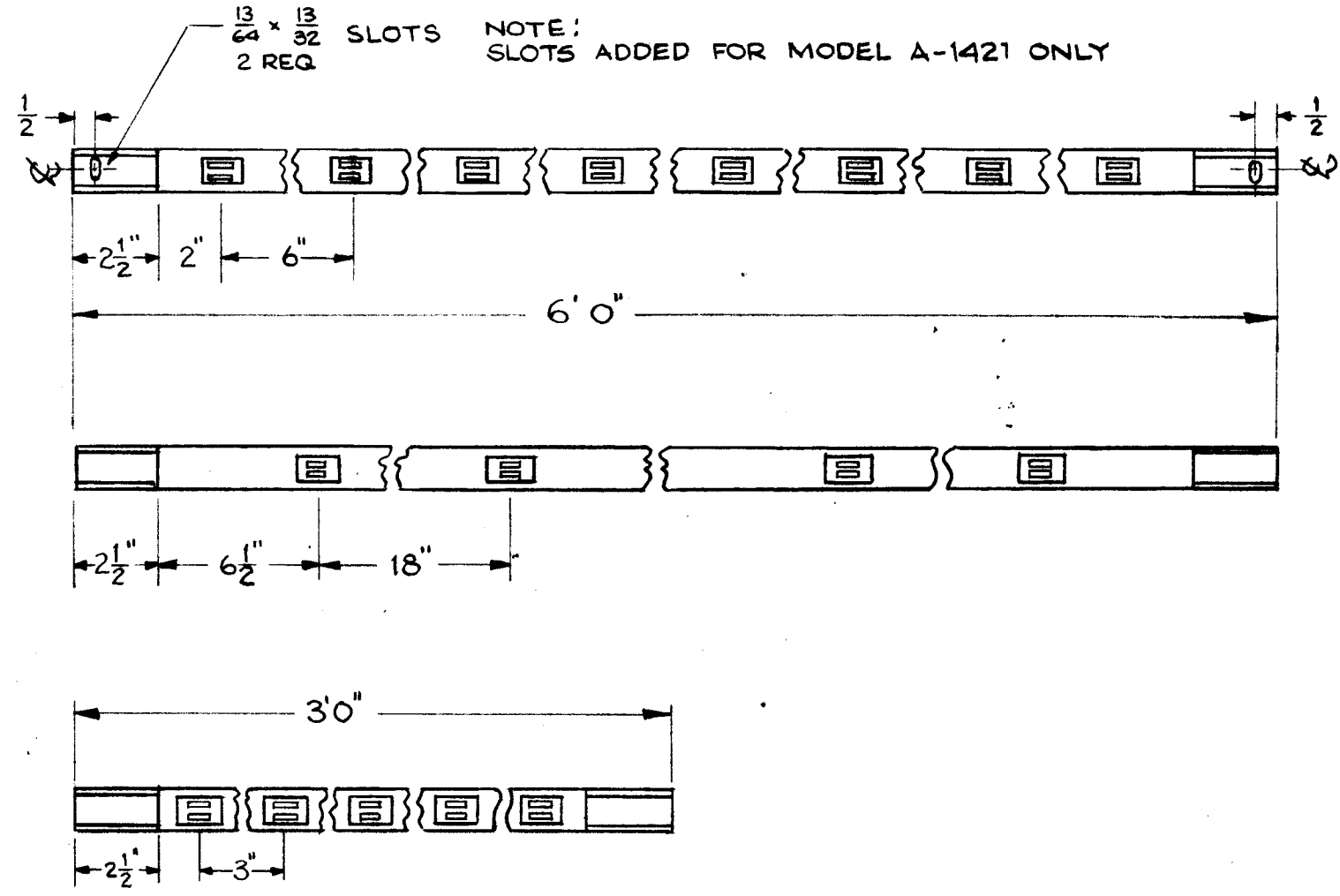


C
PO-109

PO-109-1
CAT. NO. CF2-606-6
(SEE NOTE)

PO-109-2
CAT. NO. CF2-606-18

PO-109-3
CAT. NO. CF2-603-6



STRIPS FURNISHED WITH
(4) CLIP CF2-607
(4) STRAP CF2-645

NOT TO BE REPRODUCED BY ANY PERSON RECEIVING THIS DRAWING

THE TECHNICAL MATERIEL CORPORATION claims proprietary right in the material disclosed hereon. This drawing is issued in confidence for engineering information only and may not be reproduced or used to manufacture anything shown hereon without permission from THE TECHNICAL MATERIEL CORPORATION to the user. This drawing is loaned for mutual assistance and is subject to recall at any time.

Property of:
THE TECHNICAL MATERIEL CORPORATION
MAMARONECK, NEW YORK

REF. NAT'L. ELEC. PROD. CO.

C	2	-3 added.	1/11/60	1749	<i>DM</i>	<i>AO</i>	<i>AKB</i>
	1	REDRAWN					
ISSUE	ITEM	CHANGED FROM	DATE	CH. NO.	DRAFTS	CHECKER	ENG. APP.
TOLERANCES			SCALE:				
DEC. DIM. ±			MAXIMUM ALLOWABLE TOLERANCES HAVE BEEN DETERMINED AND ANY DEVIATIONS WILL BE CAUSE FOR REJECTION.				
FRAC. DIM. ±			REMOVE ALL BURRS AND SHARP EDGES				
ANGULAR DIM. ±							

REQ. PER UNIT	MODEL	PROJECT NO.	ASS'Y. NO.	DATE
				1-11-60
USED ON				

REQ. ITEM	PART NO.	DESCRIPTION	SYMBOL
		THE TECHNICAL MATERIEL CORP.	
STOCK SIZE		MAMARONECK, NEW YORK	
		STRIP, PLUG IN	
MATERIAL			
TYPE & TEMPER	HEAT TREAT. SPEC.	DRAWN	CHECKED
		<i>DM</i>	<i>AKB</i>
FINISH & SPEC. NO.	ELEC. DES. APP.	MECH. DES. APP.	
			PO-109 C