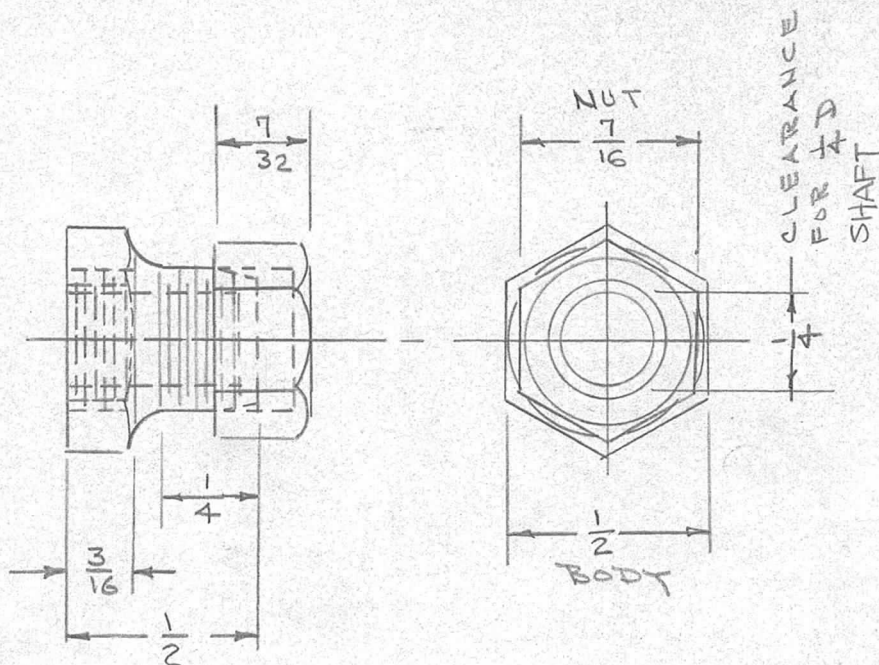


IF IT IS FOUND DESIRABLE TO CHANGE ANY TOLERANCE OR OTHER DETAIL SPECIFIED ON THIS DRAWING NOTIFY THE PURCHASER PROMPTLY.

PO-104

MAXIMUM ALLOWABLE TOLERANCES HAVE BEEN DETERMINED AND DEVIATIONS WILL BE CAUSE FOR REJECTION. REMOVE ALL BURRS AND SHARP EDGES

AMT. PER UNIT	MODEL	USED ON		
		PROJECT NO.	ASS'Y. NO.	DATE
1	XFK		A-684, Pg. 1	2-9-54
1	SBE-3	AX-204	A-1454	11-30-59
1	TIS-3			12-28-60



REF: JAMES MILLEN CO. PART NO. 10061
CAMBRIDGE THERMIONICS PART NO. X1774

REQ.	ITEM	PART NO.	DESCRIPTION	SYMBOL
			BRASS	
			STOCK SIZE	
			MATERIAL	
			WEIGHT PER PC.	
			TYPE & TEMPER	
			HEAT TREAT. SPEC.	
			NICKLE PLATE	
			FINISH & SPEC. NO.	
			THE TECHNICAL MATERIEL CORP. MAMARONECK. NEW YORK	
			SHAFT LOCK	
			DRAWN	
			ELEC. DES. APP.	
			MECH. DES. APP.	
			CHECKED	
			FINAL APPROVAL	
				PO-104

ISSUE	ITEM	CHANGED FROM	DATE	CN. NO.	DRAFTS	CHECKER	ENG. APP.
TOLERANCES		SCALE					
ALL OTHERS		DEC. DIM. ± FRAC. DIM. ± ANGULAR DIM. ±		DRILL, PUNCH, COMMERCIAL STOCK SIZES AND MANUFACTURERS TOLERANCES ARE NOT INCLUDED.			