

IF IT IS FOUND DESIRABLE TO CHANGE ANY TOLERANCE OR OTHER DETAIL SPECIFIED ON THIS DRAWING NOTIFY THE PURCHASER PROMPTLY.

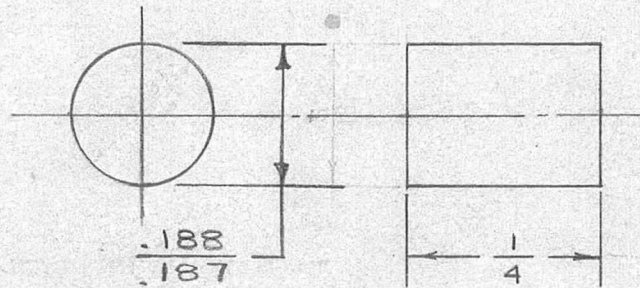
RELEASED

PN-100

MAXIMUM ALLOWABLE TOLERANCES HAVE BEEN DETERMINED AND DEVIATIONS WILL BE CAUSE FOR REJECTION. REMOVE ALL BURRS AND SHARP EDGES

USED ON

| MODEL | PROJECT NO. | ASS'Y. NO. | DATE |
|---------|-------------|------------|---------|
| TWR-115 | 151 | A-217 | 9-25-52 |



| REQ. | ITEM | PART NO. | DESCRIPTION | SYMBOL |
|------|------|--------------------------|--|--------|
| | | $\frac{.188}{.187}$ DIA. | THE TECHNICAL MATERIEL CORP. MAMARONECK. NEW YORK | |
| | | STOCK SIZE | | |
| | | STEEL DRILL ROD | GUIDE PIN | |
| | | MATERIAL | | |
| | | WEIGHT PER PC. | | |
| | | TYPE & TEMPER | | |
| | | HEAT TREAT. SPEC. | | |
| | | FINISH & SPEC. NO. | | |

| ISSUE | ITEM | CHANGED FROM | DATE | CN. NO. | DRAFTS | CHECKER | ENG. APP. |
|------------|---|--------------|---|---------|--------|---------|-----------|
| | | | | | | | |
| TOLERANCES | | | SCALE 4" TO 1" | | | | |
| ALL OTHERS | DEC. DIM. $\pm .005$ FRAC. DIM. $\pm \frac{.04}{64}$ ANGULAR DIM. \pm | | DRILL, PUNCH, COMMERCIAL STOCK SIZES AND MANUFACTURERS TOLERANCES ARE NOT INCLUDED. | | | | |

| DRAWN | ELEC. DES. APP. | MECH. DES. APP. |
|--------------------|-----------------|--------------------|
| <i>[Signature]</i> | | <i>[Signature]</i> |
| CHECKED | FINAL APPROVAL | |
| <i>[Signature]</i> | PN-100 | |

IF IT IS FOUND DESIRABLE TO CHANGE ANY TOLERANCE OR OTHER DETAIL SPECIFIED ON THIS DRAWING NOTIFY THE PURCHASER PROMPTLY.

PN-100

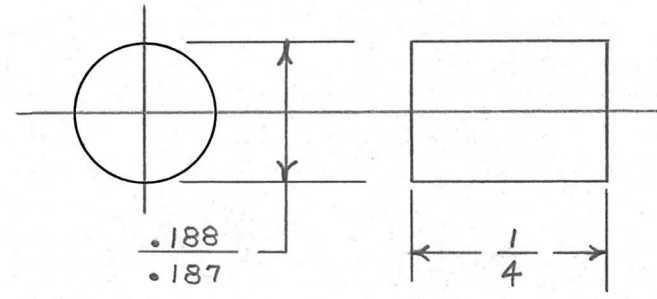
MAXIMUM ALLOWABLE TOLERANCES HAVE BEEN DETERMINED AND DEVIATIONS WILL BE CAUSE FOR REJECTION. REMOVE ALL BURRS AND SHARP EDGES

| | | | |
|---------|-------------|------------|------|
| TWR-115 | | USED ON | |
| MODEL | PROJECT NO. | ASS'Y. NO. | DATE |

NOTICE TO PERSONS RECEIVING THIS DRAWING

THE TECHNICAL MATERIEL CORPORATION claims proprietary right in the material disclosed hereon. This drawing is issued in confidence for engineering information only and may not be reproduced or used to manufacture anything shown hereon without permission from THE TECHNICAL MATERIEL CORPORATION to the user. This drawing is loaned for mutual assistance and is subject to recall at any time.

Property of:
THE TECHNICAL MATERIEL CORPORATION
MAMARONECK, NEW YORK



| REQ. | ITEM | PART NO. | DESCRIPTION | SYMBOL |
|------|------|----------|--|---------------------------------|
| | | | TMC (Canada) LIMITED OTTAWA ONTARIO | |
| | | | GUIDE PIN TAPE WINDING | |
| | | | STOCK SIZE STEEL DRILL ROD | |
| | | | MATERIAL WEIGHT PER PC. | |
| | | | TYPE & TEMPER | |
| | | | HEAT TREAT. SPEC. | |
| | | | FINISH & SPEC. NO. | |
| | | | RE 10/5/55 | |
| | | | DRAWN | ELEC. DES. APP. MECH. DES. APP. |
| | | | CHECKED | FINAL APPROVAL |
| | | | | PN-100 |

| ISSUE | ITEM | CHANGED FROM | DATE | CN. NO. | DRAFTS | CHECKER | ENG. APP. |
|------------|---|--------------|---|---------|--------|---------|-----------|
| | | | | | | | |
| TOLERANCES | | | SCALE 4" TO 1" | | | | |
| ALL OTHERS | DEC. DIM. ± .005 FRAC. DIM. ± 1/64 ANGULAR DIM. ± | | DRILL, PUNCH, COMMERCIAL STOCK SIZES AND MANUFACTURERS TOLERANCES ARE NOT INCLUDED. | | | | |

IF IT IS FOUND DESIRABLE TO CHANGE ANY TOLERANCE OR OTHER DETAIL SPECIFIED ON THIS DRAWING NOTIFY THE PURCHASER PROMPTLY.

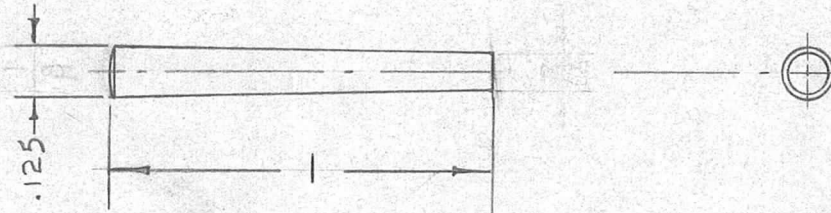
RELEASED

PN-101

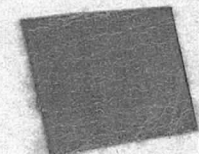
MAXIMUM ALLOWABLE TOLERANCES HAVE BEEN DETERMINED AND DEVIATIONS WILL BE CAUSE FOR REJECTION. REMOVE ALL BURRS AND SHARP EDGES

USED ON

| MODEL | PROJECT NO. | ASS'Y. NO. | DATE |
|---------|-------------|------------|----------|
| TWR-115 | 151 | A-218 | 10-16-52 |



TAPER - 1/4" TO THE FOOT



| REQ. | ITEM | PART NO. | DESCRIPTION | SYMBOL |
|------|------|--------------------|------------------------------|---------------------------------|
| | | 3/0 | THE TECHNICAL MATERIEL CORP. | |
| | | STOCK SIZE | MAMARONECK. NEW YORK | |
| | | STAINLESS STEEL | TAPER PIN | |
| | | MATERIAL | | |
| | | WEIGHT PER PC. | | |
| | | TYPE & TEMPER | 10-16-52 | |
| | | | DRAWN | ELEC. DES. APP. MECH. DES. APP. |
| | | HEAT TREAT. SPEC. | 11/6/52 | |
| | | PASSIVATE | CHECKED | FINAL APPROVAL |
| | | S-104 | | PN-101 |
| | | FINISH & SPEC. NO. | | |

| ISSUE | ITEM | CHANGED FROM | DATE | CN. NO. | DRAFTS | CHECKER | ENG. APP. |
|------------|------|---|------|---------|--------|---------|-----------|
| ALL OTHERS | | DEC. DIM. ± .005 FRAC. DIM. ± 1/64 ANGULAR DIM. ± | | | | | |

SCALE 2" TO 1"
 DRILL, PUNCH, COMMERCIAL STOCK SIZES AND MANUFACTURERS TOLERANCES ARE NOT INCLUDED.

IF IT IS FOUND DESIRABLE TO CHANGE ANY TOLERANCE OR OTHER DETAIL SPECIFIED ON THIS DRAWING NOTIFY THE PURCHASER PROMPTLY.

STANDARD DRAWING

PN-101

MAXIMUM ALLOWABLE TOLERANCES HAVE BEEN DETERMINED AND DEVIATIONS WILL BE CAUSE FOR REJECTION. REMOVE ALL BURRS AND SHARP EDGES

TWR-115

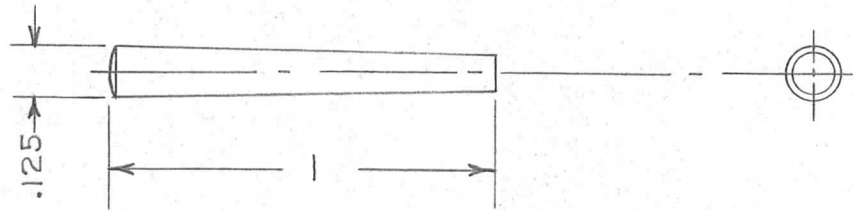
USED ON

MODEL

PROJECT NO.

ASS'Y. NO.

DATE



TAPER - $\frac{1}{4}$ " TO THE FOOT

| REQ. | ITEM | PART NO. | DESCRIPTION | SYMBOL |
|------|------|--------------------|--|---------------------------------|
| | | 3/0 | TMC (Canada) LIMITED OTTAWA ONTARIO | |
| | | STAINLESS STEEL | TAPER PIN | |
| | | MATERIAL | TAPE WINDING | |
| | | WEIGHT PER PC. | J.W.T.10-5-55 | |
| | | TYPE & TEMPER | DRAWN | ELEC. DES. APP. MECH. DES. APP. |
| | | HEAT TREAT. SPEC. | CHECKED | FINAL APPROVAL |
| | | PASSIVATE S-104 | | PN-101 |
| | | FINISH & SPEC. NO. | | |

| ISSUE | ITEM | CHANGED FROM | DATE | CN. NO. | DRAFTS | CHECKER | ENG. APP. |
|-------|------|--------------|------|---------|--------|---------|-----------|
| | | | | | | | |

TOLERANCES

SCALE 2" TO 1"

ALL OTHERS

DEC. DIM. $\pm .005$
FRAC. DIM. $\pm \frac{1}{64}$
ANGULAR DIM. \pm

DRILL, PUNCH, COMMERCIAL STOCK SIZES AND MANUFACTURERS TOLERANCES ARE NOT INCLUDED.

IF IT IS FOUND DESIRABLE TO CHANGE ANY TOLERANCE OR OTHER DETAIL SPECIFIED ON THIS DRAWING NOTIFY THE PURCHASER PROMPTLY.

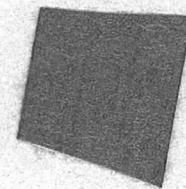
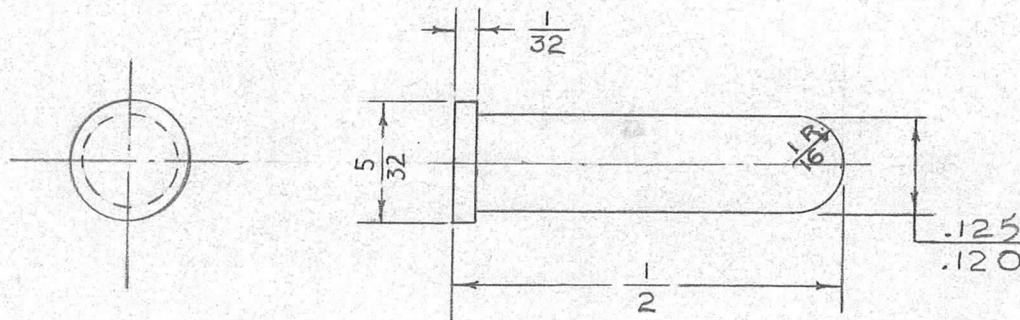
RELEASED

PN-102

MAXIMUM ALLOWABLE TOLERANCES HAVE BEEN DETERMINED AND DEVIATIONS WILL BE CAUSE FOR REJECTION. REMOVE ALL BURRS AND SHARP EDGES

USED ON

| MODEL | PROJECT NO. | ASS'Y. NO. | DATE |
|---------|-------------|------------|---------|
| TWR-115 | 151 | A-223 | 9-13-52 |



| REQ. | ITEM | PART NO. | DESCRIPTION | SYMBOL |
|------|------|--------------------|--|--------|
| | | 5/32 DIA. | THE TECHNICAL MATERIEL CORP. MAMARONECK, NEW YORK | |
| | | STOCK SIZE | | |
| | | STAINLESS STEEL | REEL STOP PIN | |
| | | MATERIAL | | |
| | | 303 OR 416 | | |
| | | TYPE & TEMPER | | |
| | | HEAT TREAT. SPEC. | | |
| | | PASSIVATE | | |
| | | S-104 | | |
| | | FINISH & SPEC. NO. | | |

| ISSUE | ITEM | CHANGED FROM | DATE | CN. NO. | DRAFTS | CHECKER | ENG. APP. |
|------------|------|---|------|---------|--------|---------|-----------|
| ALL OTHERS | | DEC. DIM. $\pm .005$ FRAC. DIM. $\pm \frac{1}{64}$ ANGULAR DIM. \pm | | | | | |

SCALE 4" TO 1"

DRILL, PUNCH, COMMERCIAL STOCK SIZES AND MANUFACTURERS TOLERANCES ARE NOT INCLUDED.

DRAWN: *J. Gabel*
ELEC. DES. APP.: *ADe*
MECH. DES. APP.: *ADe*
CHECKED: *ADe 11/14/52*
FINAL APPROVAL: *ADe*
PN-102

IF IT IS FOUND DESIRABLE TO CHANGE ANY TOLERANCE OR OTHER DETAIL SPECIFIED ON THIS DRAWING NOTIFY THE PURCHASER PROMPTLY.

PN-102

MAXIMUM ALLOWABLE TOLERANCES HAVE BEEN DETERMINED AND DEVIATIONS WILL BE CAUSE FOR REJECTION. REMOVE ALL BURRS AND SHARP EDGES

TWR-115

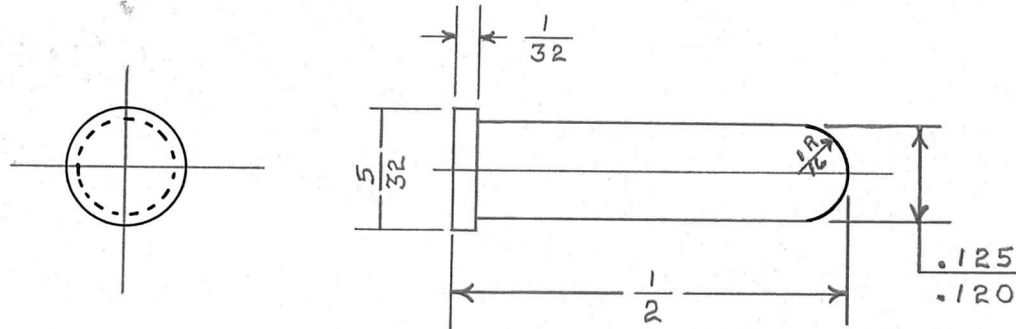
USED ON

MODEL

PROJECT NO.

ASS'Y. NO.

DATE



NOTICE TO PERSONS RECEIVING THIS DRAWING

THE TECHNICAL MATERIEL CORPORATION claims proprietary right in the material disclosed hereon. This drawing is issued in confidence for engineering information only and may not be reproduced or used to manufacture anything shown hereon without permission from THE TECHNICAL MATERIEL CORPORATION to the user. This drawing is loaned for mutual assistance and is subject to recall at any time.

Property of:

THE TECHNICAL MATERIEL CORPORATION
MAMARONECK, NEW YORK

| REQ. | ITEM | PART NO. | DESCRIPTION | SYMBOL |
|------|------|--------------------|---|---------------------------------|
| | | 5/32 DIA. | TMC (Canada) LIMITED OTTAWA ONTARIO | |
| | | STOCK SIZE | | |
| | | STAINLESS STEEL | REEL STOP PIN | |
| | | MATERIAL | | |
| | | WEIGHT PER PC. | TAPE WINDING | |
| | | 303 OR 416 | | |
| | | TYPE & TEMPER | DR 10/5/55 | |
| | | — # — | DRAWN | ELEC. DES. APP. MECH. DES. APP. |
| | | HEAT TREAT. SPEC. | Law | |
| | | PASSIVATE | | |
| | | S-104 | CHECKED | FINAL APPROVAL |
| | | FINISH & SPEC. NO. | | PN-102 |

| ISSUE | ITEM | CHANGED FROM | DATE | CN. NO. | DRAFTS | CHECKER | ENG. APP. |
|------------|---|--------------|---|---------|--------|---------|-----------|
| TOLERANCES | | | SCALE 4" TO 1" | | | | |
| ALL OTHERS | DEC. DIM. ± .005 FRAC. DIM. ± 1/64 ANGULAR DIM. ± | | DRILL, PUNCH, COMMERCIAL STOCK SIZES AND MANUFACTURERS TOLERANCES ARE NOT INCLUDED. | | | | |

IF IT IS FOUND DESIRABLE TO CHANGE ANY TOLERANCE OR OTHER DETAIL SPECIFIED ON THIS DRAWING NOTIFY THE PURCHASER PROMPTLY.

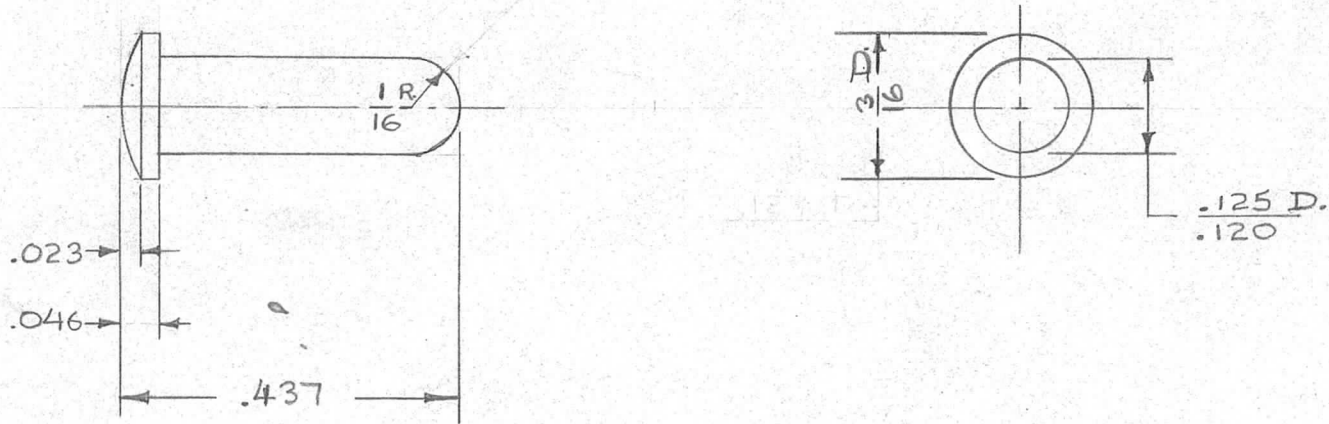
RELEASED

PN-103

MAXIMUM ALLOWABLE TOLERANCES HAVE BEEN DETERMINED AND DEVIATIONS WILL BE CAUSE FOR REJECTION. REMOVE ALL BURRS AND SHARP EDGES

USED ON

| MODEL | PROJECT NO. | ASS'Y. NO. | DATE |
|-------|-------------|------------|----------|
| CK-2 | 168 | A-272 | 11-26-52 |



| REQ. | ITEM | PART NO. | DESCRIPTION | SYMBOL |
|------|------|--------------------|--|---------------------------------|
| | | 3/16" D. ROD | THE TECHNICAL MATERIEL CORP. MAMARONECK, NEW YORK | |
| | | STOCK SIZE | | |
| | | STAINLESS STEEL | LOCKING PIN | |
| | | MATERIAL | | |
| | | WEIGHT PER PC. | | |
| | | 303 OR 416 | | |
| | | TYPE & TEMPER | 15 11-26-52 | |
| | | | DRAWN | ELEC. DES. APP. MECH. DES. APP. |
| | | | 12-12-52 | |
| | | | CHECKED | FINAL APPROVAL |
| | | HEAT TREAT. SPEC. | | |
| | | (S-104)- PASSIVATE | | |
| | | FINISH & SPEC. NO. | | |

| ISSUE | ITEM | CHANGED FROM | DATE | CN. NO. | DRAFTS | CHECKER | ENG. APP. |
|------------|-------------------|---|------|-----------------|--------|---------|-----------|
| | | | | | | | |
| TOLERANCES | | | | SCALE FULL SIZE | | | |
| ALL OTHERS | DEC. DIM. ± .005 | DRILL, PUNCH, COMMERCIAL STOCK SIZES AND MANUFACTURERS TOLERANCES ARE NOT INCLUDED. | | | | | |
| | FRAC. DIM. ± 1/64 | | | | | | |
| | ANGULAR DIM. ± | | | | | | |

PN-103

IF IT IS FOUND DESIRABLE TO CHANGE ANY TOLERANCE OR OTHER DETAIL SPECIFIED ON THIS DRAWING NOTIFY THE PURCHASER PROMPTLY.

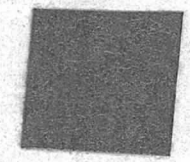
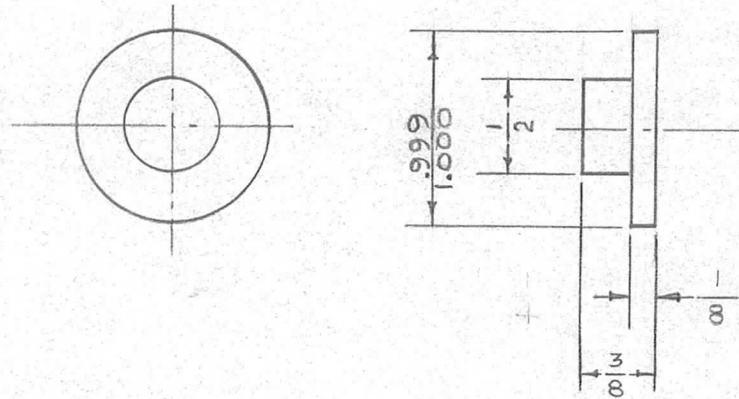
RELEASED

PN-104

MAXIMUM ALLOWABLE TOLERANCES HAVE BEEN DETERMINED AND DEVIATIONS WILL BE CAUSE FOR REJECTION. REMOVE ALL BURRS AND SHARP EDGES

USED ON

| MODEL | PROJECT NO. | ASS'Y. NO. | DATE |
|---------|-------------|------------|----------|
| TWR-115 | 151 | A-219 | 10-16-52 |



| REQ. | ITEM | PART NO. | DESCRIPTION | SYMBOL |
|------|------|---------------------|--|---------------------------------|
| | | 1" DIA. | THE TECHNICAL MATERIEL CORP. MAMARONECK. NEW YORK | |
| | | STOCK SIZE | | |
| | | ALUMINUM | BOSS PIN | |
| | | MATERIAL | | |
| | | 115-T3 | | |
| | | TYPE & TEMPER | 16 10-16-52 | |
| | | — ff — | DRAWN | ELEC. DES. APP. MECH. DES. APP. |
| | | HEAT TREAT. SPEC. | 11/17/52 | |
| | | CAUSTIC DIP (S-101) | CHECKED | FINAL APPROVAL |
| | | FINISH & SPEC. NO. | | PN-104 |

| ISSUE | ITEM | CHANGED FROM | DATE | CN. NO. | DRAFTS | CHECKER | ENG. APP. |
|------------|------|---|------|---------|--------|---------|-----------|
| ALL OTHERS | | DEC. DIM. ± .005 FRAC. DIM. ± 1/64 ANGULAR DIM. ± | | | | | |

SCALE FULL SIZE
DRILL, PUNCH, COMMERCIAL STOCK SIZES AND MANUFACTURERS TOLERANCES ARE NOT INCLUDED.

IF IT IS FOUND DESIRABLE TO CHANGE ANY TOLERANCE OR OTHER DETAIL SPECIFIED ON THIS DRAWING NOTIFY THE PURCHASER PROMPTLY.

PN-104

MAXIMUM ALLOWABLE TOLERANCES HAVE BEEN DETERMINED AND DEVIATIONS WILL BE CAUSE FOR REJECTION. REMOVE ALL BURRS AND SHARP EDGES

TWR-115

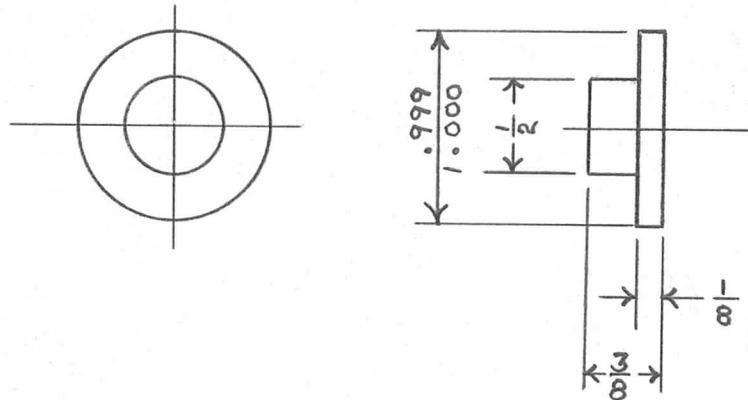
USED ON

MODEL

PROJECT NO.

ASS'Y. NO.

DATE



NOTICE TO PERSONS RECEIVING THIS DRAWING

THE TECHNICAL MATERIEL CORPORATION claims proprietary right in the material disclosed hereon. This drawing is issued in confidence for engineering information only and may not be reproduced or used to manufacture anything shown hereon without permission from THE TECHNICAL MATERIEL CORPORATION to the user. This drawing is loaned for mutual assistance and is subject to recall at any time.

Property of:

THE TECHNICAL MATERIEL CORPORATION
MAMARONECK, NEW YORK

| REQ. | ITEM | PART NO. | DESCRIPTION | SYMBOL |
|------|------|----------------------|--|---------------------------------|
| | | 1" DIA. | TMC (Canada) LIMITED OTTAWA ONTARIO | |
| | | STOCK SIZE | | |
| | | ALUMINUM | BOSS PIN | |
| | | MATERIAL | TAPE WINDING | |
| | | 115-T3 | RA 6/5/55 | |
| | | TYPE & TEMPER | | |
| | | H | DRAWN | ELEC. DES. APP. MECH. DES. APP. |
| | | HEAT TREAT. SPEC. | Law FINAL APPROVAL | |
| | | CAUSTIC DIP S-101 | | |
| | | FINISH & SPEC. NO. | CHECKED | PN-104 |

| ISSUE | ITEM | CHANGED FROM | DATE | CN. NO. | DRAFTS | CHECKER | ENG. APP. |
|------------|---|--------------|---|---------|--------|---------|-----------|
| | | | | | | | |
| TOLERANCES | | | SCALE FULL SIZE | | | | |
| ALL OTHERS | DEC. DIM. ± .005 FRAC. DIM. ± 1/64 ANGULAR DIM. ± | | DRILL, PUNCH, COMMERCIAL STOCK SIZES AND MANUFACTURERS TOLERANCES ARE NOT INCLUDED. | | | | |

IF IT IS FOUND DESIRABLE TO CHANGE ANY TOLERANCE OR OTHER DETAIL SPECIFIED ON THIS DRAWING NOTIFY THE PURCHASER PROMPTLY.

STANDARD DRAWING

PN-105

MAXIMUM ALLOWABLE TOLERANCES HAVE BEEN DETERMINED AND DEVIATIONS WILL BE CAUSE FOR REJECTION. REMOVE ALL BURRS AND SHARP EDGES

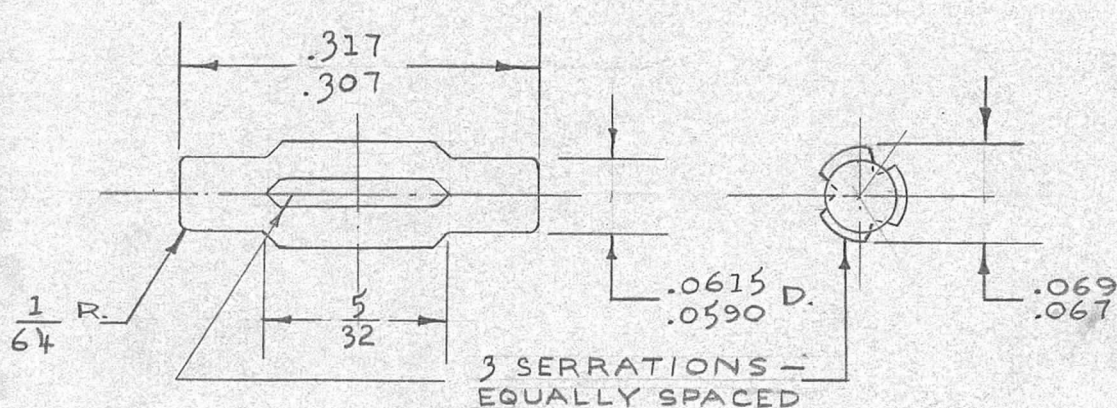
USED ON

MODEL

PROJECT NO.

ASS'Y. NO.

DATE



DIMENSIONS FOR REF. ONLY

REF.: SHAKEPROOF INC. CAT # 38-2-CP

| REQ. | ITEM | PART NO. | DESCRIPTION | SYMBOL |
|------|------|--------------------------|--|---------------------------------|
| | | // | THE TECHNICAL MATERIEL CORP. MAMARONECK, NEW YORK | |
| | | STOCK SIZE | | |
| | | STEEL | // | CROSS PIN, NO. 2 |
| | | MATERIAL | WEIGHT PER PC. | |
| | | CHROME VANADIUM | | |
| | | TYPE & TEMPER | 16 10-27-52 | G.T.O. <i>[Signature]</i> |
| | | HARDENED | DRAWN | ELEC. DES. APP. MECH. DES. APP. |
| | | TEMPERED | C.O.P. 10-27-52 | <i>[Signature]</i> |
| | | HEAT TREAT. SPEC. | CHECKED | FINAL APPROVAL |
| | | CADMIUM PLATE (S-105) | | PN-105 |
| | | FINISH & SPEC. NO. | | |

| ISSUE | ITEM | CHANGED FROM | DATE | CN. NO. | DRAFTS | CHECKER | ENG. APP. |
|------------|---|--------------|---|---------|--------|---------|-----------|
| | | | | | | | |
| TOLERANCES | | | SCALE 8" TO 1" | | | | |
| ALL OTHERS | DEC. DIM. \pm FRAC. DIM. \pm ANGULAR DIM. \pm | | DRILL, PUNCH, COMMERCIAL STOCK SIZES AND MANUFACTURERS TOLERANCES ARE NOT INCLUDED. | | | | |

IF IT IS FOUND DESIRABLE TO CHANGE ANY TOLERANCE OR OTHER DETAIL SPECIFIED ON THIS DRAWING NOTIFY THE PURCHASER PROMPTLY.

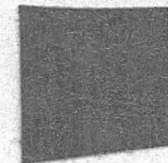
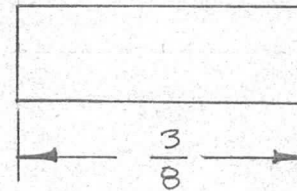
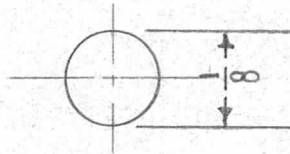
RELEASED

PN-106

MAXIMUM ALLOWABLE TOLERANCES HAVE BEEN DETERMINED AND DEVIATIONS WILL BE CAUSE FOR REJECTION. REMOVE ALL BURRS AND SHARP EDGES

USED ON

| MODEL | PROJECT NO. | ASS'Y. NO. | DATE |
|---------|-------------|------------|---------|
| TWR-115 | 151 | A-219 | 12-1-52 |



| REQ. | ITEM | PART NO. | DESCRIPTION | SYMBOL |
|------|------|--------------------|--|---------------------------------|
| | | 1/8 DIA. | THE TECHNICAL MATERIEL CORP. MAMARONECK, NEW YORK | |
| | | STOCK SIZE | | |
| | | STAINLESS STEEL | CENTER PIN | |
| | | MATERIAL | | |
| | | 303 OR 416 | | |
| | | TYPE & TEMPER | 15 12-1-52 | |
| | | HEAT TREAT. SPEC. | DRAWN | ELEC. DES. APP. MECH. DES. APP. |
| | | FINISH & SPEC. NO. | CHECKED | FINAL APPROVAL |
| | | | | PN-106 |

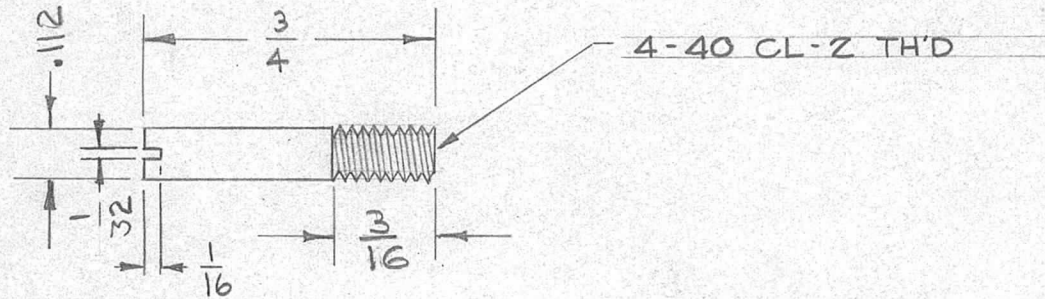
| ISSUE | ITEM | CHANGED FROM | DATE | CN. NO. | DRAFTS | CHECKER | ENG. APP. |
|------------|--|--------------|---|---------|--------|---------|-----------|
| TOLERANCES | | | SCALE 4" TO 1" | | | | |
| ALL OTHERS | DEC. DIM. ± FRAC. DIM. ± 1/64 ANGULAR DIM. ± | | DRILL, PUNCH, COMMERCIAL STOCK SIZES AND MANUFACTURERS TOLERANCES ARE NOT INCLUDED. | | | | |

IF IT IS FOUND DESIRABLE TO CHANGE ANY TOLERANCE OR OTHER DETAIL SPECIFIED ON THIS DRAWING NOTIFY THE PURCHASER PROMPTLY.

PN-108 C

MAXIMUM ALLOWABLE TOLERANCES HAVE BEEN DETERMINED AND DEVIATIONS WILL BE CAUSE FOR REJECTION. REMOVE ALL BURRS AND SHARP EDGES

| REQ PER UNIT | USED ON | | | |
|--------------|----------|-------------|------------|--------|
| | MODEL | PROJECT NO. | ASS'Y. NO. | DATE |
| 1 | VOX | 101 | A-415 | 3-4-53 |
| 9 | RSC-3 | 225 | | 5/4/59 |
| 1 | GPR-50RX | | | 5/4/59 |



HAMMARLUND K-19580-1

| REQ. | ITEM | PART NO. | DESCRIPTION | SYMBOL |
|------|------|-----------------|--|--------|
| | | | THE TECHNICAL MATERIEL CORP. MAMARONECK, NEW YORK | |
| | | STAINLESS STEEL | PIN, LOCKING | |
| | | 303 | C.D.D. 3-4-53 | |
| | | | A J J | |
| | | | W O E | |
| | | | A J J | |
| | | | W O E | |
| | | S104-PASSIVATE | SUPERCEDES BMS079 | |
| | | | PN-108 | C |

| ISSUE | ITEM | CHANGED FROM | DATE | CN. NO. | DRAFTS | CHECKER | ENG. APP. |
|-------|------|---|---------|---------|--------|---------|-----------|
| C | | DIM. 1/32 & 1/16 ADD; MATERIAL, & TYPE & TEMPER. FINISH ADDED | 2-17-65 | 13506 | 22 | JCB | |
| B | 1 | .112 was .116 3/16 was 1/4 | 5/4/59 | 949 | HQ | | |
| A | 1 | Thread size added | 4/13/59 | 1 | J.C.B. | | |

| TOLERANCES | | SCALE 5401-12(K-19580-1) OR EQUIV. |
|------------|---|---|
| ALL OTHERS | DEC. DIM. ± FRAC. DIM. ± ANGULAR DIM. ± | DRILL, PUNCH, COMMERCIAL STOCK SIZES AND MANUFACTURERS TOLERANCES ARE NOT INCLUDED. |

IF IT IS FOUND DESIRABLE TO CHANGE ANY TOLERANCE OR OTHER DETAIL SPECIFIED ON THIS DRAWING NOTIFY THE PURCHASER PROMPTLY.

STANDARD DRAWING

PN-109 F

MAXIMUM ALLOWABLE TOLERANCES HAVE BEEN DETERMINED AND DEVIATIONS WILL BE CAUSE FOR REJECTION. REMOVE ALL BURRS AND SHARP EDGES

USED ON

| MODEL | PROJECT NO. | ASS'Y. NO. | DATE |
|-------|-------------|------------|------|
|-------|-------------|------------|------|

| TMC STOCK No. | USE (BUY) | USE USED ON |
|---------------|---------------------------|--------------------|
| PN-109-1 | PN-107-79-.012-.062-0.312 | VOX |
| PN-109-2 | PN-107-79-.012-.062-0.500 | VOX |
| PN-109-3 | PN-107-52-.012-.062-0.625 | TAC-1 |
| PN-109-4 | PN-107-52-.012-.062-0.937 | TAC-1 |
| PN-109-5 | PN-107-52-.012-.062-0.250 | PMO-1, 2 |
| PN-109-6 | PN-107-52-.012-.062-0.812 | PMO-1-2 VOX-1-2 |
| PN-109-7 | PN-107-52-.012-.062-0.375 | RTF |

PN-79-062-5
PN-79-062-8
PN-52-062-10
PN-52-062-15
PN-52-062-4
PN-52-062-13
PN-52-062-6

NOTE- DO NOT ADD ANY NEW ITEMS TO THIS DWG.
USE STD. DWG. PN- (2 SIZE) FOR ALL FUTURE REQ.

| ISSUE | ITEM | CHANGED FROM | DATE | CN. NO. | DRAFTS | CHECKER | ENG. APP. |
|-------|------|----------------|---------|---------|--------|---------|-----------|
| F | 1 | PN-109-4 ADDED | 2/11/54 | 6 | ESD | | |
| E | 1 | PN-109-6 ADDED | 4-15-55 | 5 | ESD | PS | WDE |
| D | 1 | -1 WAS 0.321 | 1-20-55 | 4 | ESD | JACO | WDE |
| C | 1 | -5 ADDED | 12-2-54 | 3 | RB | JACO | M.H.S. |
| B | 2 | .012 WAS .014 | 5/13/54 | 2 | C.D.D | JACO | WDE |
| A | 1 | PN-109-4 ADDED | 3/21/54 | 1 | C.D.D | JACO | WDE |

| REQ. | ITEM | PART NO. | DESCRIPTION | SYMBOL |
|------|------|--------------------|--|-----------------|
| | | | THE TECHNICAL MATERIEL CORP. MAMARONECK, NEW YORK | |
| | | STOCK SIZE | | |
| | | MATERIAL | WEIGHT PER PC. | |
| | | TYPE & TEMPER | | |
| | | HEAT TREAT. SPEC. | | |
| | | FINISH & SPEC. NO. | | |
| | | | CDD 2-5-54 | G.T.O |
| | | | DRAWN | ELEC. DES. APP. |
| | | | CHECKED | MECH. DES. APP. |
| | | | FINAL APPROVAL | |
| | | | PN-109 | F |

| TOLERANCES | SCALE |
|---|---|
| ALL OTHERS DEC. DIM. ± FRAC. DIM. ± ANGULAR DIM. ± | DRILL, PUNCH, COMMERCIAL STOCK SIZES AND MANUFACTURERS TOLERANCES ARE NOT INCLUDED. |

IF IT IS FOUND DESIRABLE TO CHANGE ANY TOLERANCE OR OTHER DETAIL SPECIFIED ON THIS DRAWING NOTIFY THE PURCHASER PROMPTLY.

PN-110

MAXIMUM ALLOWABLE TOLERANCES HAVE BEEN DETERMINED AND DEVIATIONS WILL BE CAUSE FOR REJECTION. REMOVE ALL BURRS AND SHARP EDGES

REQ. PER UNIT

USED ON

4

MODEL

KS-85 X

PROJECT NO.

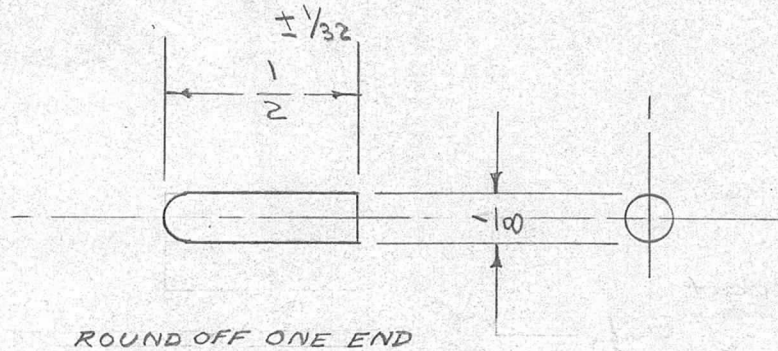
J-227

ASS'Y. NO.

A-502

DATE

4-29-54



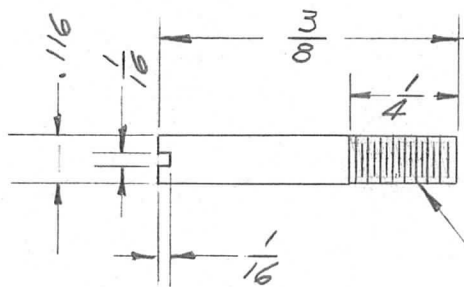
| REQ. | ITEM | PART NO. | DESCRIPTION | SYMBOL |
|------|------|--------------------|--|--------|
| | | 1/8 DIA. | THE TECHNICAL MATERIEL CORP. MAMARONECK, NEW YORK | |
| | | STOCK SIZE | | |
| | | STEEL | PIN, LOCKING | |
| | | MATERIAL | | |
| | | DRILL ROD | | |
| | | WEIGHT PER PC. | | |
| | | TYPE & TEMPER | C.D.D. 4-29-54 | |
| | | HEAT TREAT. SPEC. | | |
| | | FINISH & SPEC. NO. | | |

| ISSUE | ITEM | CHANGED FROM | DATE | CN. NO. | DRAFTS | CHECKER | ENG. APP. |
|------------|---|---|-------|---------|--------|---------|-----------|
| TOLERANCES | | | SCALE | | | | |
| ALL OTHERS | DEC. DIM. ± FRAC. DIM. ± ANGULAR DIM. ± | DRILL, PUNCH, COMMERCIAL STOCK SIZES AND MANUFACTURERS TOLERANCES ARE NOT INCLUDED. | | | | | |

DRAWN: *Jade*
 CHECKED: *Jade*
 ELEC. DES. APP.: *[Signature]*
 MECH. DES. APP.: *[Signature]*
 FINAL APPROVAL: *[Signature]*

PN-110

| | | | | |
|--------------------|---------|------------|------|--------|
| REQ. PER UNIT 2 | USED ON | | | PN-111 |
| | MODEL | ASS'Y. NO. | DATE | |



4-40 THD. CL 2
(AFTER PLATING)

| ISSUE | ITEM | CHANGED FROM | DATE | CH. NO. | DRAFTS | CHECKER | ENG. APP. | REQ. ITEM | PART NO. | DESCRIPTION | SYMBOL | |
|-------|------|--------------|------|---------|--------|---------|-----------|-----------------------|-------------------|--|---------|----------------|
| | | | | | | | | | | THE TECHNICAL MATERIEL CORP. MAMARONECK, NEW YORK | | |
| | | | | | | | | | STOCK SIZE | PIN, LOCKING | | |
| | | | | | | | | | BRASS | | | |
| | | | | | | | | | MATERIAL | | | |
| | | | | | | | | FREE TURNING | K. 82157 | HWE | AW | |
| | | | | | | | | TYPE & TEMPER | HEAT TREAT. SPEC. | DRAWN | CHECKED | FINAL APPROVAL |
| | | | | | | | | CADMIUM PLATE -002 | | | | PN-111 |
| | | | | | | | | FINISH & SPEC. NO. | ELEC. DES. APP. | MECH. DES. APP. | | |

DEC. DIM. ±
FRAC. DIM. ±
ANGULAR DIM. ±

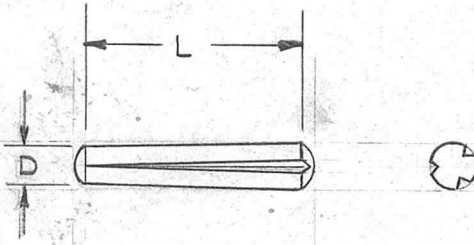
SCALE:
MAXIMUM ALLOWABLE TOLERANCES HAVE BEEN DETERMINED AND ANY DEVIATIONS WILL BE CAUSE FOR REJECTION.
REMOVE ALL BURRS AND SHARP EDGES

STANDARD DRAWING

| | REQ. PER. UNIT | USED ON | | |
|----------|----------------|----------|------------|----------|
| | | MODEL | ASS'Y. NO. | DATE |
| | 1 EA | GPT-10K | AS-102 | 9-14-59 |
| PN-114-3 | 2 | CHG-1 | GEAR ASS'Y | 10-31-60 |
| PN-114-4 | 2 | CHG-1 | GEAR ASS'Y | 12-9-60 |
| PN-114-5 | 1 | GPT 200K | A-2706 | 5-25-64 |

PN-114 D

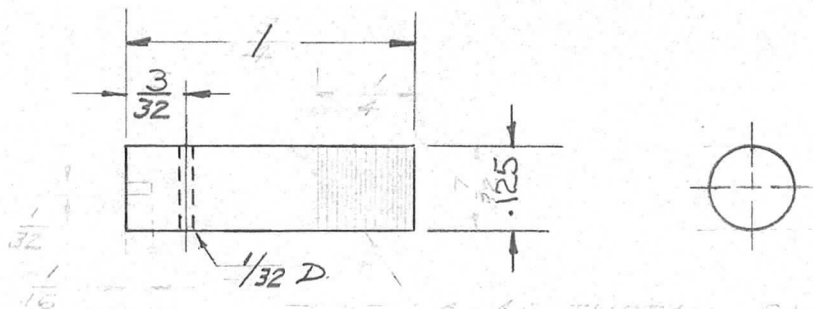
| TMC PART # | L | D, MAX | D, MIN | MAT'L | TAPER L | DRILL SIZE |
|------------|-----|--------|--------|-------|---------|------------|
| PN-114-1 | 3/4 | .134 | .125 | SS | .009 | .125 |
| PN-114-2 | 7/8 | .134 | .125 | SS | .009 | .125 |
| PN-114-3 | 1/2 | .068 | .062 | SS | .006 | 1/16 |
| PN-114-4 | 1/2 | .101 | .093 | SS | .008 | 3/32 |
| PN-114-5 | 1 | .134 | .125 | SS | .009 | .125 |



| | | | | |
|------|-----|-----|-----------|-------|
| TYPE | L | D | MIN. DIA. | MAT'L |
| | 3/4 | 1/8 | .125 | SS |

| ISSUE | ITEM | CHANGED FROM | DATE | CH. NO. | DRAFTS | CHECKER | ENG. APP. | REQ. ITEM | PART NO. | DESCRIPTION | SYMBOL | |
|---|------|--|--|---------|--------|---------|-----------|---------------|----------|--|--------|--|
| D | 1 | PN-114-5 ADDED | 7.30.64 | 11989 | AWB | 82 | | | | THE TECHNICAL MATERIEL CORP. MAMARONECK, NEW YORK GROOVE PIN | D | |
| C | 2 | QUANT. of -3 WAS 12. | 3/16/61 | 4433 | DPM | JCS | | | | | | |
| | 1 | QUANT. of -4 WAS 1. | | | | | | | | | | |
| B | 1 | PN-114-4 Added .006 Added to PN-114-3 | 12-9-60 | 3681 | RL | JCS | | | | | | |
| A | 2 | PN-114-3 ADDED MODEL CHG-1 ADDED | 10-31-60 | 3335 | WFS | | | | | | | |
| TOLERANCES | | | SCALE: S401-301 | | | | | MATERIAL | | DRAWN: <i>JORILLO 9-14-59</i> CHECKED: <i>[Signature]</i> FINAL APPROVAL: <i>[Signature]</i> | | |
| DEC. DIM. ± FRAC. DIM. ± ANGULAR DIM. ± | | | MAXIMUM ALLOWABLE TOLERANCES HAVE BEEN DETERMINED AND ANY DEVIATIONS WILL BE CAUSE FOR REJECTION. REMOVE ALL BURRS AND SHARP EDGES | | | | | TYPE & TEMPER | | FINISH & SPEC. NO. ELEC. DES. APP. MECH. DES. APP. | | |
| | | | | | | | | | | PN-114 D | | |

| | | | | | |
|---------------|-----------|------------|---------|--------|---|
| REQ. PER UNIT | USED ON | | | PN-112 | B |
| | MODEL | ASS'Y. NO. | DATE | | |
| 1 | GPR 90 RX | A-1480 | 8-28-57 | | |



4-40 THREAD CL 2

NOTE:
PRESS FIT WITH PM-463

| REQ. | ITEM | PART NO. | DESCRIPTION | | | | SYMBOL | | |
|-------------------|------|-------------------|---|---------|-------------------|---------|-----------------|---------|----------------|
| | | PM-460-1.00-B | THE TECHNICAL MATERIEL CORP. MAMARONECK, NEW YORK | | | | | | |
| | | STOCK SIZE | PIN, STRIKER | | | | | | |
| | | MATERIAL | | | | | | | |
| B | 1 | Added Note | 6-20-61 | 5102 | MAF | gcs | EAFM | | |
| A | 1 | Complete Revision | 10/12/57 | 1 | JAWB | KS | MB | | |
| ISSUE | ITEM | CHANGED FROM | DATE | CH. NO. | DRAFTS | CHECKER | ENG. APP. | | |
| TOLERANCES | | | SCALE: | | | | | | |
| DEC. DIM. ± | | | MAXIMUM ALLOWABLE TOLERANCES HAVE BEEN DETERMINED AND ANY DEVIATIONS WILL BE CAUSE FOR REJECTION. | | | | | | |
| FRAC. DIM. ± 1/64 | | | REMOVE ALL BURRS AND SHARP EDGES | | | | | | |
| ANGULAR DIM. ± | | | TYPE & TEMPER | | HEAT TREAT. SPEC. | | DRAWN | CHECKED | FINAL APPROVAL |
| | | | | | | | P.L.K. | | PN-112 |
| | | | FINISH & SPEC. NO. | | ELEC. DES. APP. | | MECH. DES. APP. | | B |

THE CONTENTS OF THIS DRAWING ARE THE EXCLUSIVE PROPERTY OF THE TECHNICAL MATERIEL CORP. ITS UNAUTHORIZED USE OR REPRODUCTION IN WHOLE OR IN PART IS STRICTLY FORBIDDEN.

REQ. PER UNIT

USED ON

MODEL
STANDARD

ASS'Y. NO.

DATE

1-20-62

PN-116

B

LENGTH

DIAMETER

3 3/8

A .1250

4 1/2

B .1875

5 5/8

C .2500

6 3/4

D .3125

7 7/8

E .3750

8 1"

F .4375

10 1 1/4

G .5000

12 1 1/2

H .6250

14 1 3/4

J .7500

16 2"

K .8750

18 2 1/4

L 1.000

20 2 1/2

M .0937

24 3"

28 3 1/2

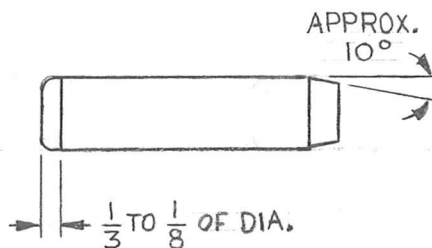
32 4"

36 4 1/2

40 5

48 6

49 9/16



MATERIAL

DIA. TOL.

| | | |
|---|---------------------------|--------------------|
| S | STAINLESS STEEL | + .0002 - .0000 |
| A | ALUMINUM | + .0002 - .0000 |
| B | BRASS | + .0002 - .0000 |
| C | COLD ROLLED ST. (CAD PL.) | + .0002 - .0000 |
| P | PLASTIC | ± .005 |

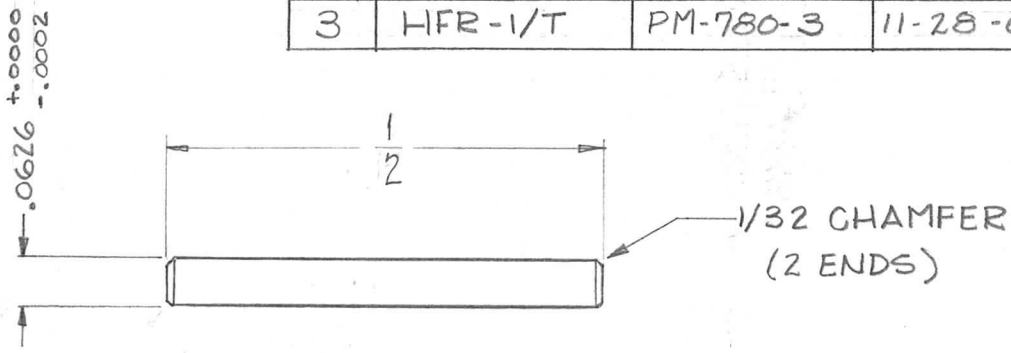
PN-116-A-5-S
 DIAMETER ——— MAT'L.
 ——— LENGTH (IN 1/8 THS.)

| REQ. | ITEM | PART NO. | DESCRIPTION | SYMBOL | | | | | | |
|--|---|---|-------------|---------------|---------|------------------|-----------------|---------|-----------------|----------|
| B | ON PICT: DIM. ADDED. MAT. CHART: DIA. TOL. COL. ADD. DIA. CHART: DEC. WERE, FRACT. EQUIV. ON LENGTH CHART '49, 3/16 ADD. | 12.10.64 13097 | STB | BT | | | | | | |
| A | M DIA. ADDED | 3/25/64 11108 | A.M. | @ | | | | | | |
| SYM | DESCRIPTION | DATE | CH. NO. | DRAFTS | CHECKER | ENG. APP. | MATERIAL | | | |
| UNLESS OTHERWISE SPECIFIED: DIMENSIONS ARE IN INCHES TOLERANCES ON FRAC. ± 1/64 DEC. ± .005 ANGLES ± 1/2° | | SCALE: MAXIMUM ALLOWABLE TOLERANCES HAVE BEEN DETERMINED AND ANY DEVIATIONS WILL BE CAUSE FOR REJECTION. REMOVE ALL BURRS AND SHARP EDGES | | TYPE & TEMPER | | HEATTREAT. SPEC. | DRAWN | CHECKED | FINAL APPROVAL | |
| | | | | | | | ab | J We | BT | |
| | | | | | | | | | | PN-116 B |
| | | | | | | | ELEC. DES. APP. | | MECH. DES. APP. | |

THE CONTENTS OF THIS DRAWING ARE THE EXCLUSIVE PROPERTY OF THE TECHNICAL MATERIEL CORP. ITS UNAUTHORIZED USE OR REPRODUCTION IN WHOLE OR IN PART IS STRICTLY FORBIDDEN.

| REQ. PER UNIT | USED ON | | |
|---------------|---------|------------|----------|
| | MODEL | ASS'Y. NO. | DATE |
| 3 | HFR-1/T | PM-780-1 | 5-28-62 |
| 3 | HFR-1/T | PM-780-2 | 11-28-62 |
| 3 | HFR-1/T | PM-780-3 | 11-28-62 |

PN-117 C



NOTE ~ THIS PIN TO BE PRESS FITTED INTO SHAFT COUPLER.

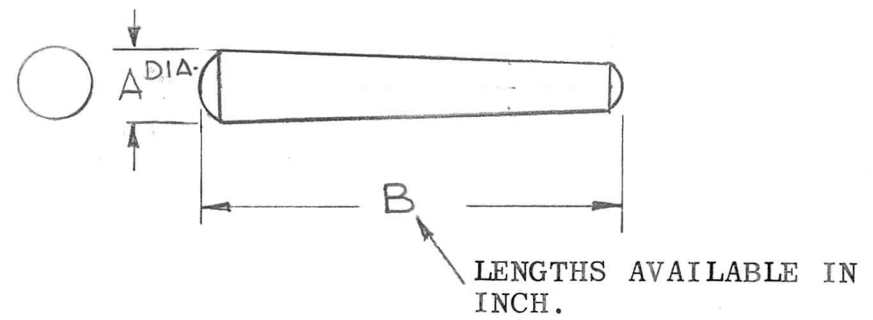
PERFECT GEAR & INSTRUMENT CORP.
PART NO. AN.2-10 OR EQUIV.

REF. TMC PART NO. PM-780

| SYM | DESCRIPTION | DATE | CH. NO. | DRAFTS | CHECKER | ENG. APP. | REQ. ITEM | PART NO. | DESCRIPTION | SYMBOL |
|-----|---|---------------------|---------|---------------|---------------|---------------|--------------------|-----------------|--|----------|
| C | MODELS & ASSY. NOS. ADDED | 11-28-62 | 7738 | BP | JH | TV | | .0626 DIA. ROD | THE TECHNICAL MATERIEL CORP. MAMARONECK, NEW YORK PIN, STRAIGHT, DOWEL | C |
| B | DRAWING REINSTATED | 7-6-62 | | BP | JH | TV | | STOCK SIZE | | |
| A | OBSOLETE NOTE ADDED | 6-27-62 | | BP | JH | TV | | STAINLESS STEEL | | |
| | | | | | | | | MATERIAL | | |
| | UNLESS OTHERWISE SPECIFIED: DIMENSIONS ARE IN INCHES TOLERANCES ON FRAC. $\pm 1/64$ DEC. $\pm .005$ ANGLES $\pm 1/2^\circ$ | SCALE: DO NOT SCALE | | | | | #303 | | D.J. Man | BP |
| | MAXIMUM ALLOWABLE TOLERANCES HAVE BEEN DETERMINED AND ANY DEVIATIONS WILL BE CAUSE FOR REJECTION. REMOVE ALL BURRS AND SHARP EDGES | | | | | | S104 PASSIVATE | J. ANGER | | |
| | | | | | | | FINISH & SPEC. NO. | ELEC. DES. APP. | MECH. DES. APP. | PN-117 C |

| TMC CODE | SIZE | DIMENSIONS | | REQ. PER UNIT | USED ON | | | PN121 | Ø |
|----------|------|------------|------|---------------|---------|------------|----------|-------|---|
| | | A | B | | MODEL | ASS'Y. NO. | DATE | | |
| PN121-1 | 5/0 | .094 | 1/2 | 1 | VLRB-1 | | 11-19-64 | | |
| PN121-2 | 7/0 | .0625 | 5/16 | | | | | | |

STANDARD DRAWING



NOMENCLATURE SHALL BE IN THE FOLLOWING FORM:

PN121 - 1 - .500
 TMC BASIC CODE "B" IN INCH. 3 PLACES
 P/N

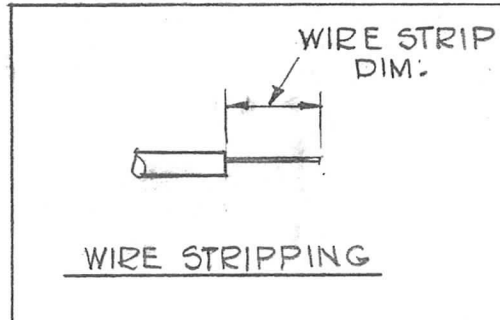
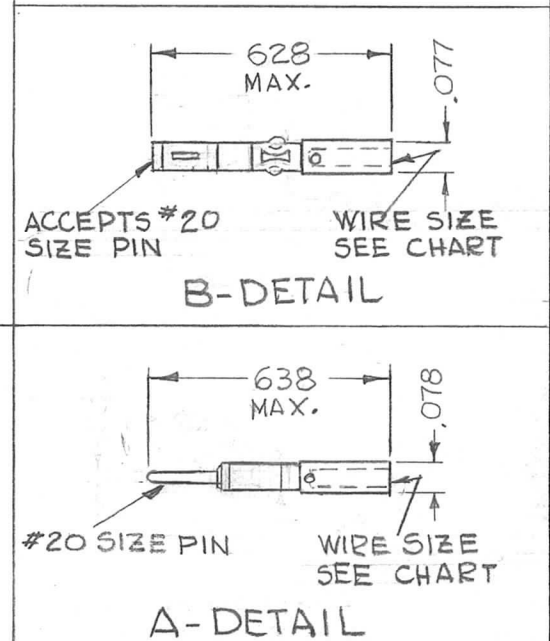
- NOTE:
1. TAPER 1/4" PER FOOT.
 2. TO FIND SMALL DIAMETER OF PIN, MULTIPLY THE LENGTH BY 0.02083 AND SUBTRACT THE RESULT FROM THE LARGE DIAMETER.

| | | | | | | | | | | | | |
|-----|---|------------|---|-----------|------------------------------|-----------|-----------|--------------------|-------------------|--|-----------------|-----------------|
| | | | | | | | REQ. ITEM | PART NO. | 0, POSE | DESCRIPTION | SYMBOL | |
| | | | | | | | | # | | THE TECHNICAL MATERIEL CORP. MAMARONECK, NEW YORK | | |
| Ø | ORIGINAL RELEASE FOR PRODUCTION | 4.9.65 | Ø | 22 | | | | STOCK SIZE | | PIN, TAPER | | |
| X | EXPER. RELEASE | 11-19-64 | | G.D.L | | | | STAINLESS STEEL | | | | |
| SYM | DESCRIPTION | DATE | CH. NO. | DRAFTS | CHECKER | ENG. APP. | | MATERIAL | | | | |
| | UNLESS OTHERWISE SPECIFIED DIMENSIONS ARE IN INCHES AND INCLUDE CHEMICALLY APPLIED OR PLATED FINISHES | | SCALE | NOT SCALE | | | | 18-8 | # | G.D.L 11-19-64 | @ | M. Kelly 4/9/65 |
| | DECIMALS .X ± .05 .XX ± .01 .XXX ± .0013 - .0017 | TOLERANCES | FRACTIONS ± 1/64 ANGLES ± 0° 30' | CODE | S401-342 (ASAB 5.20-1958) | | | TYPE & TEMPER | HEAT TREAT. SPEC. | DRAWN | CHECKED | FINAL APPROVAL |
| | | | | C | | | | # | | | | PN121 Ø |
| | | | | | | | | FINISH & SPEC. NO. | | ELEC. DES. APP. | MECH. DES. APP. | |

STANDARD DRAWING

| | | | | |
|---------------|---------|------------|---------|---|
| REQ. PER UNIT | USED ON | | PN 119 | Ø |
| | MODEL | ASS'Y. NO. | | |
| | | | 7-24-64 | |

| TMC PART NO | MFG PART NO | WIRE SIZE | TYPE | MFG CRIMP TOOL NO. | CRIMP JAW SETTING | WIRE STRIP DIM. | DETAIL | USED WITH | REQ. |
|-------------|-------------|-------------------|--------|--------------------|-------------------|-----------------|--------|-----------|------|
| PN 119 -1 | 17-1038 | #20 #22 OR #24 | MALE | 294-136 | .033/.040 DIA | .234 .249 | A | JJ 313 | |
| PN 119 -2 | 17-1037 | #20 #22 OR #24 | FEMALE | 294-136 | .033/.040 DIA | .234 .249 | B | JJ 310 | |



| REQ. | ITEM | PART NO. | EATON | DESCRIPTION | SYMBOL | |
|------|---|---|-----------------|--|----------------|-----------|
| | | —//— | | THE TECHNICAL MATERIEL CORP. MAMARONECK, NEW YORK | | |
| Ø | | STOCK SIZE | | PIN, CONTACT, ELECTRICAL | | |
| X | | —//— | | | | |
| | | MATERIAL | | | | |
| SYM | DESCRIPTION | DATE | CH. NO. | DRAFTS | CHECKER | ENG. APP. |
| | UNLESS OTHERWISE SPECIFIED DIMENSIONS ARE IN INCHES AND INCLUDE CHEMICALLY APPLIED OR PLATED FINISHES | SCALE | 2:1 | | | |
| | DECIMALS .X ± .05 .XX ± .01 .XXX ± .005 | FRACTIONS ± 1/64 ANGLES ± 0° 30' | CODE | | | |
| | TOLERANCES | | C | | | |
| | TYPE & TEMPER | HEAT TREAT. SPEC. | | | | |
| | FINISH & SPEC. NO. | | | | | |
| | | | SRG | @ | RAL | |
| | | | DRWN | CHECKED | FINAL APPROVAL | |
| | | | JEE | | | |
| | | | ELEC. DES. APP. | MECH. DES. APP. | | |
| | | | | | PN 119 | Ø |

| | | | | | |
|---------------|---------|------------|---------|-------|---|
| REQ. PER UNIT | USED ON | | | PN122 | B |
| | MODEL | ASS'Y. NO. | DATE | | |
| | RTKY-1 | | 12-1-64 | | |

| TMC PART NO. | MFR. PART NO. | DIMENSIONS | | MAX. WIRE SIZE | CONTACT TYPE | USED WITH | C | MFG. CODE | REMARKS |
|--------------|----------------------|------------|------|----------------|--------------|-----------|------|-----------|--------------|
| | | A | B | | | | | | |
| PN122-1 | FC-222N | .033 | .055 | 22 | FEMALE | PL249 | .040 | A | — |
| PN122-2 | FC-220N | .045 | .065 | 20 | FEMALE | PL249 | .040 | A | — |
| PN122-3 | FC-120 N IA8-1620 | .046 | .065 | 20 | FEMALE | PL249 | .062 | ABC | EA56IS20-030 |
| PN122-4 | IA8-1619 FC-116N | .068 | .098 | 16 | FEMALE | PL249 | .062 | ABC | EA56ISI6-030 |

SPECIFICATIONS

MATERIAL OF CONTACTS:

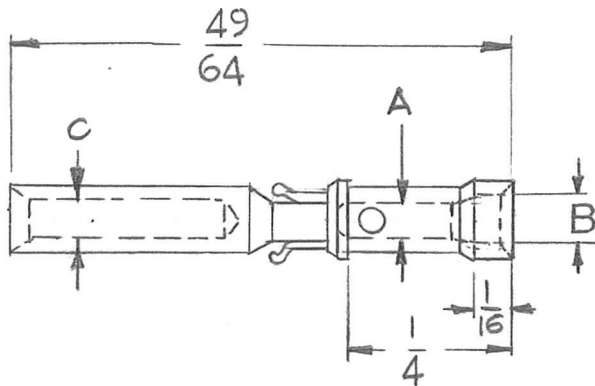
PIN

FEMALE: PHOSPHOR BRONZE

FINISH: .000030 MIN. GOLD OVER

.0002 MIN. SILVER.

CONTACT TYPE: CRIMP



- FEMALE -

STANDARD DRAWING

| | | | | | | | | | | | | | | | |
|---|--|---|-----------|--|--------------------|---|--|----------|-------------|--------|-----------------|-----------------|-------|---|--|
| B | ADD -3-4, "C" TO MFG. CODE. ADD REMARKS COL. ADD S401-340 | 3-27-67 | 18042 | RME | <i>[Signature]</i> | REQ. | ITEM | PART NO. | DESCRIPTION | SYMBOL | | | | | |
| A | -3-4 "C" MFG CODE COLUMNS & CONTACT TYPE ADDED | 6-22-65 | 14257 | D.V.K. | <i>[Signature]</i> | THE TECHNICAL MATERIEL CORP. MAMARONECK. NEW YORK PIN, CONTACT, CRIMP | | | | | | | | | |
| Ø | ORIGINAL RELEASE FOR PRODUCTION | 12-7-64 | Ø | J.F. | | | | | | | STOCK SIZE | | | | |
| X | EXPER. RELEASE | 12-1-64 | | G.D.L. | | | | | | | MATERIAL | | | | |
| SYM | DESCRIPTION | DATE | CH. NO. | DRAFTS | CHECKER | ENG. APP. | TYPE & TEMPER HEAT TREAT. SPEC. DRAWN CHECKED FINAL APPROVAL | | | | | | | | |
| UNLESS OTHERWISE SPECIFIED DIMENSIONS ARE IN INCHES AND INCLUDE CHEMICALLY APPLIED OR PLATED FINISHES | | SCALE DO NOT SCALE | | | | G.D.L. ¹²⁻¹⁻⁶⁴ @ <i>[Signature]</i> | | | | | | | | | |
| DECIMALS .X ± .05 .XX ± .01 .XXX ± .005 | TOLERANCES | FRACTIONS ± 1/64 ANGLES ± 0° 30' | CODE C | A-S401-349 B-S401-361 C-S401-340 | | FINISH & SPEC. NO. | | | | | ELEC. DES. APP. | MECH. DES. APP. | PN122 | B | |