

REQ. PER UNIT	USED ON			PN122	B
	MODEL	ASS'Y. NO.	DATE		
	RTKY-1		12-1-64		

TMC PART NO.	MFR. PART NO.	DIMENSIONS		MAX. WIRE SIZE	CONTACT TYPE	USED WITH	C	MFG. CODE	REMARKS
		A	B						
PN122-1	FC-222N	.033	.055	22	FEMALE	PL249	.040	A	—
PN122-2	FC-220N	.045	.065	20	FEMALE	PL249	.040	A	—
PN122-3	FC-120 N IA8-1620	.046	.065	20	FEMALE	PL249	.062	ABC	EA56IS20-030
PN122-4	IA8-1619 FC-116N	.068	.098	16	FEMALE	PL249	.062	ABC	EA56ISI6-030

SPECIFICATIONS

MATERIAL OF CONTACTS:

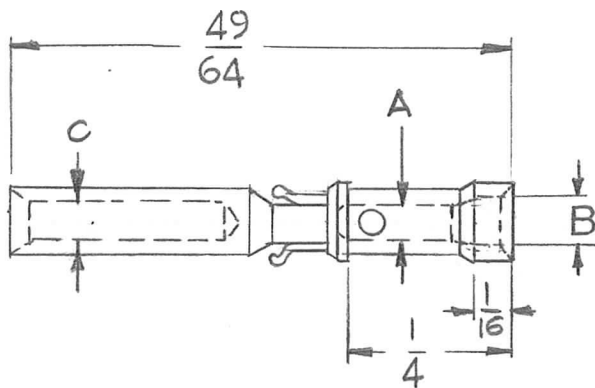
PIN

FEMALE: PHOSPHOR BRONZE

FINISH: .000030 MIN. GOLD OVER

.0002 MIN. SILVER.

CONTACT TYPE: CRIMP



- FEMALE -

STANDARD DRAWING

B	ADD -3-4, "C" TO MFG. CODE. ADD REMARKS COL. ADD S401-340	3-27-67	18042	RME	<i>[Signature]</i>	REQ.	ITEM	PART NO.	DESCRIPTION	SYMBOL				
A	-3-4 "C" MFG CODE COLUMNS & CONTACT TYPE ADDED	6-22-65	14257	D.V.K.	<i>[Signature]</i>	<b>THE TECHNICAL MATERIEL CORP.</b> MAMARONECK. NEW YORK <b>PIN, CONTACT, CRIMP</b>								
Ø	ORIGINAL RELEASE FOR PRODUCTION	12-7-64	Ø	J.F.										
X	EXPER. RELEASE	12-1-64		G.D.L.										
SYM	DESCRIPTION	DATE	CH. NO.	DRAFTS	CHECKER	ENG. APP.	MATERIAL							
UNLESS OTHERWISE SPECIFIED DIMENSIONS ARE IN INCHES AND INCLUDE CHEMICALLY APPLIED OR PLATED FINISHES						SCALE DO NOT SCALE								
DECIMALS .X ± .05 .XX ± .01 .XXX ± .005		FRACTIONS ± 1/64 ANGLES ± 0° 30'		CODE	A-S401-349 B-S401-361 C-S401-340		TYPE & TEMPER		HEAT TREAT. SPEC.	FINISH & SPEC. NO.	ELEC. DES. APP.	MECH. DES. APP.	PN122	B
						G.D.L. 12-1-64		Ø	<i>[Signature]</i>	FINAL APPROVAL				