

IF IT IS FOUND DESIRABLE TO CHANGE ANY TOLERANCE OR OTHER DETAIL SPECIFIED ON THIS DRAWING NOTIFY THE PURCHASER PROMPTLY.

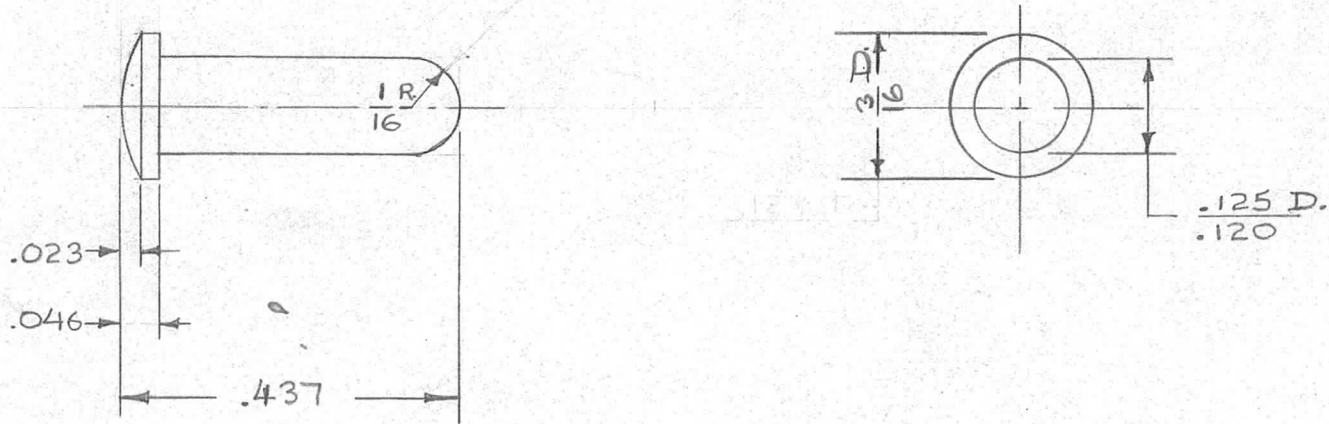
RELEASED

PN-103

MAXIMUM ALLOWABLE TOLERANCES HAVE BEEN DETERMINED AND DEVIATIONS WILL BE CAUSE FOR REJECTION. REMOVE ALL BURRS AND SHARP EDGES

USED ON

MODEL	PROJECT NO.	ASS'Y. NO.	DATE
CK-2	168	A-272	11-26-52



REQ.	ITEM	PART NO.	DESCRIPTION	SYMBOL
		3/16 D. ROD	THE TECHNICAL MATERIEL CORP. MAMARONECK, NEW YORK	
		STOCK SIZE		
		STAINLESS STEEL	LOCKING PIN	
		MATERIAL		
		WEIGHT PER PC.		
		303 OR 416		
		TYPE & TEMPER	15 11-26-52	
			DRAWN	ELEC. DES. APP. MECH. DES. APP.
			12-12-52	
		HEAT TREAT. SPEC.	CHECKED	FINAL APPROVAL
		(S-104)- PASSIVATE		
		FINISH & SPEC. NO.		

ISSUE	ITEM	CHANGED FROM	DATE	CN. NO.	DRAFTS	CHECKER	ENG. APP.
TOLERANCES				SCALE FULL SIZE			
ALL OTHERS	DEC. DIM. ± .005 FRAC. DIM. ± 1/64 ANGULAR DIM. ±			DRILL, PUNCH, COMMERCIAL STOCK SIZES AND MANUFACTURERS TOLERANCES ARE NOT INCLUDED.			

PN-103