

IF IT IS FOUND DESIRABLE TO CHANGE ANY TOLERANCE OR OTHER DETAIL SPECIFIED ON THIS DRAWING NOTIFY THE PURCHASER PROMPTLY.

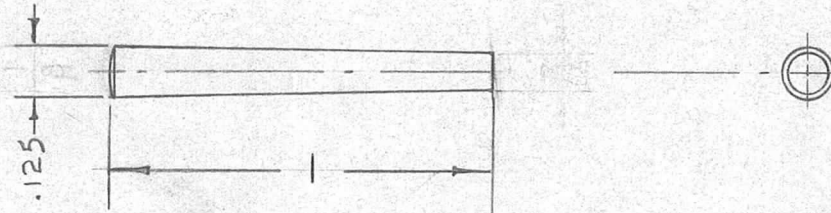
RELEASED

PN-101

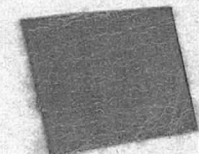
MAXIMUM ALLOWABLE TOLERANCES HAVE BEEN DETERMINED AND DEVIATIONS WILL BE CAUSE FOR REJECTION. REMOVE ALL BURRS AND SHARP EDGES

USED ON

MODEL	PROJECT NO.	ASS'Y. NO.	DATE
TWR-115	151	A-218	10-16-52



TAPER - 1/4" TO THE FOOT



REQ.	ITEM	PART NO.	DESCRIPTION	SYMBOL
		3/0	THE TECHNICAL MATERIEL CORP. MAMARONECK. NEW YORK	
		STAINLESS STEEL	TAPER PIN	
		MATERIAL		
		WEIGHT PER PC.		
		TYPE & TEMPER	16 10-16-52	
		HEAT TREAT. SPEC.	DRAWN	ELEC. DES. APP.
		PASSIVATE	MECH. DES. APP.	
		FINISH & SPEC. NO.	11/6/52	
			CHECKED	FINAL APPROVAL
				PN-101

ISSUE	ITEM	CHANGED FROM	DATE	CN. NO.	DRAFTS	CHECKER	ENG. APP.
ALL OTHERS		DEC. DIM. ± .005 FRAC. DIM. ± 1/64 ANGULAR DIM. ±					

SCALE 2" TO 1"

DRILL, PUNCH, COMMERCIAL STOCK SIZES AND MANUFACTURERS TOLERANCES ARE NOT INCLUDED.

IF IT IS FOUND DESIRABLE TO CHANGE ANY TOLERANCE OR OTHER DETAIL SPECIFIED ON THIS DRAWING NOTIFY THE PURCHASER PROMPTLY.

STANDARD DRAWING

PN-101

MAXIMUM ALLOWABLE TOLERANCES HAVE BEEN DETERMINED AND DEVIATIONS WILL BE CAUSE FOR REJECTION. REMOVE ALL BURRS AND SHARP EDGES

TWR-115

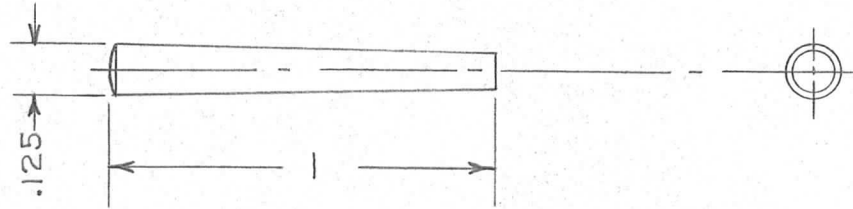
USED ON

MODEL

PROJECT NO.

ASS'Y. NO.

DATE



TAPER - $\frac{1}{4}$ " TO THE FOOT

REQ.	ITEM	PART NO.	DESCRIPTION	SYMBOL
		3/0	TMC (Canada) LIMITED OTTAWA ONTARIO	
		STOCK SIZE		
		STAINLESS STEEL	TAPER PIN	
		MATERIAL	WEIGHT PER PC.	
			TAPE WINDING	
			J.W.T.10-5-55	
		TYPE & TEMPER	DRAWN	ELEC. DES. APP. MECH. DES. APP.
		HEAT TREAT. SPEC.	CHECKED	FINAL APPROVAL
		PASSIVATE S-104		
		FINISH & SPEC. NO.		PN-101

ISSUE	ITEM	CHANGED FROM	DATE	CN. NO.	DRAFTS	CHECKER	ENG. APP.

TOLERANCES

SCALE 2" TO 1"

ALL OTHERS	DEC. DIM. $\pm .005$
	FRAC. DIM. $\pm \frac{1}{64}$
	ANGULAR DIM. \pm

DRILL, PUNCH, COMMERCIAL STOCK SIZES AND MANUFACTURERS TOLERANCES ARE NOT INCLUDED.