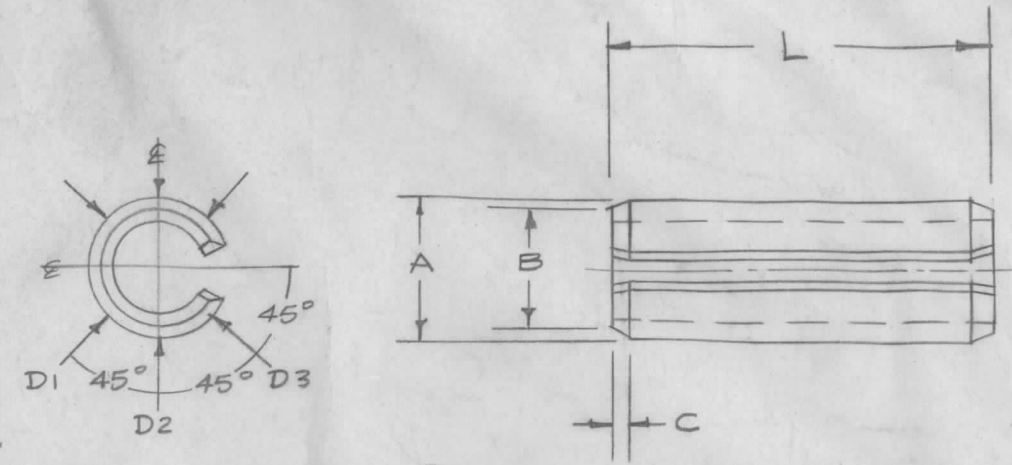


DIMENSIONS						HOLE SIZE		MINIMUM DOUBLE SHEAR STRENGTH (PDS.)	
NOM.	A		B MAX.	C MAX.	STOCK THK.	MIN.	MAX.	STEEL	COPPER
	MAX.	MIN. $\frac{1}{3}(D1+D2+D3)$							
.062	.069	.066	.059	.028	.012	.062	.065	425	270
.078	.086	.083	.075	.032	.018	.078	.081	650	400
.094	.103	.099	.091	.038	.022	.094	.097	1000	660
.125	.135	.131	.122	.044	.028	.125	.129	2100	1200
.156	.167	.162	.151	.048	.032	.156	.160	3000	1800
.187	.199	.194	.182	.055	.040	.187	.192	4400	2600
.219	.232	.226	.214	.065	.048	.219	.224	5700	3700
.250	.264	.258	.245	.065	.048	.250	.256	7700	4500



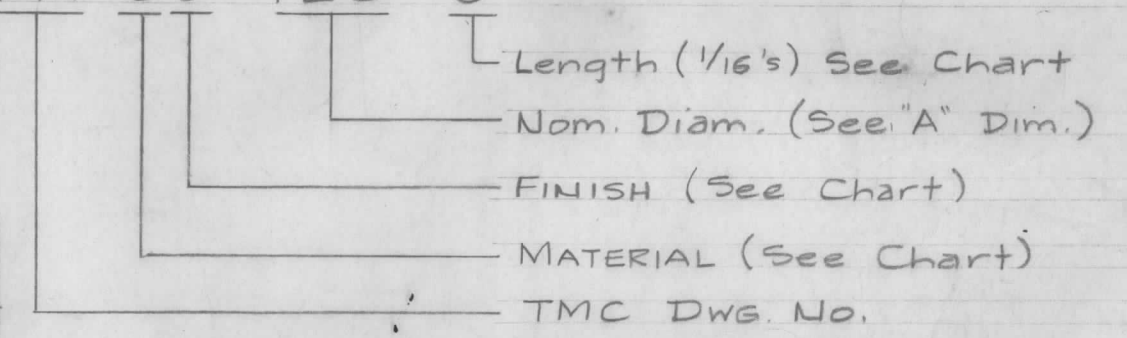
TMC LENGTH CODE	LENGTH "L"	AVAILABLE DIAM.							
		.062	.078	.094	.125	.156	.187	.219	.250
3	.187	X	X	X					
4	.250	X	X	X	X				
5	.312	X	X	X	X				
6	.375	X	X	X	X	X	X		
7	.437	X	X	X	X	X	X		
8	.500	X	X	X	X	X	X		
9	.562	X	X	X	X	X	X		
10	.625	X	X	X	X	X	X	X	X
11	.687	X	X	X	X	X	X		X
12	.750	X	X	X	X	X	X	X	X
13	.812		X	X	X	X	X		X
14	.875		X	X	X	X	X	X	X
15	.937		X	X	X	X	X		X
16	1.000	X	X	X	X	X	X	X	X

MATERIALS	
CODE	MATERIAL
5	High Carbon Steel
7	Corrosion Resist. Steel, AISI 420 (Magnetic)
9	Beryllium Copper Alloy, ASTM B194-51 (Non-Magnetic)

FINISHES		FOR MATERIAL (CODE)
CODE	FINISH	
1	Zinc Plate, FED. Spec. QQ-Z-325, Type 1, Class 3	5 & 9
2	Cad. Plate, FED. Spec. QQ-P-416, Type 1, Class C	5 & 9
3	Phosphate Coat., Army Spec. 57-0-2C, Type 2, Cl. B	5
9	Plain	5, 7, 9

Nomenclature to be in following form:

PN 59-125-8



ISSUE	ITEM	CHANGED FROM	DATE	CH. NO.	DRAFTS	CHECKER	ENG. APP.
A		16 LENGTH, AVAIL IN .062 STK. ADDED	3-14-66	15953	uw	pb	x
TOLERANCES			SCALE:				
DEC. DIM. ±			MAXIMUM ALLOWABLE TOLERANCES HAVE BEEN DETERMINED AND ANY DEVIATIONS WILL BE CAUSE FOR REJECTION. REMOVE ALL BURRS AND SHARP EDGES				
FRAC. DIM. ±							
ANGULAR DIM. ±							
REQ. PER UNIT	MODEL	PROJECT NO.	ASS'Y. NO.	DATE	USED ON		

REQ. ITEM	PART NO.	DESCRIPTION	SYMBOL
		THE TECHNICAL MATERIEL CORP. MAMARONECK, NEW YORK	
STOCK SIZE		PIN, SPRING	
MATERIAL			
TYPE & TEMPER	HEAT TREAT. SPEC.	DRAWN	CHECKED
FINISH & SPEC. NO.	ELEC. DES. APP.	MECH. DES. APP.	
	LG	AWC	AJT
	15A7	W	PN-
			A