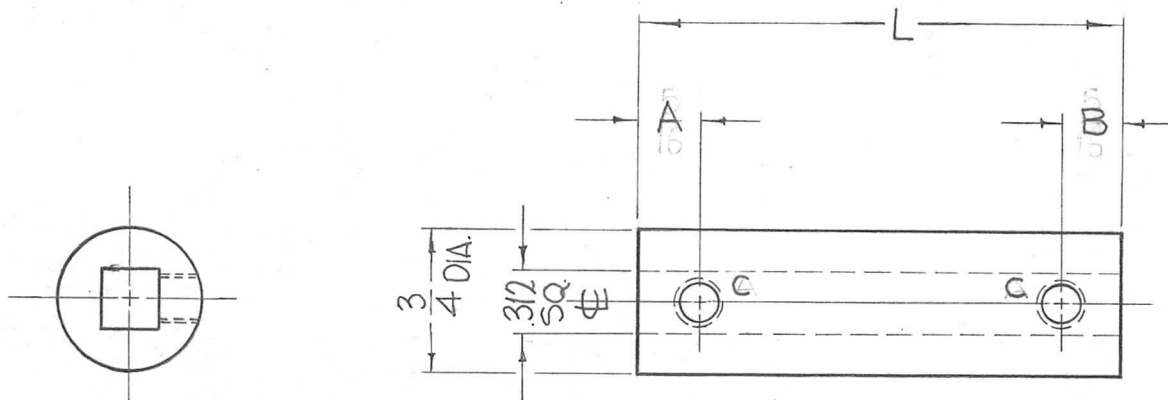


TMC NO.	A	B	L	"C"	REQ.
PM-997-1	5/16	NONE	1-11/16	DR.TAP 1/4-20	1

REQ. PER UNIT	USED ON			PM-997 <del>Ø</del>
	MODEL	ASS'Y. NO.	DATE	
2	GPT-200K	AX-395	9-30-63	



REQ. ITEM	PART NO.	F. BUDETTI	DESCRIPTION	SYMBOL						
0	ORIGINAL RELEASE	5.16.64	WB							
X3	REMOVED "C" HOLE LEGEND ADDED TO CHART	12-24-63								
X2	-1 OBSOLETE, -1 WAS -2	11-19-63								
SYM	DESCRIPTION	DATE	CH. NO.	DRAFTS	CHECKER	ENG. APP.	MATERIAL	COUPLING		
UNLESS OTHERWISE SPECIFIED DIMENSIONS ARE IN INCHES AND INCLUDE CHEMICALLY APPLIED OR PLATED FINISHES		SCALE		1" = 1"		303		RIGHT & GEAR BOX		
DECIMALS .X ± .05 .XX ± .01 .XXX ± .005		FRACTIONS ± 1/64 ANGLES ± 0° 30'		TOLERANCES		TYPE & TEMPER		HEAT TREAT. SPEC.		John C. Biele
								DRAWN		AA
								CHECKED		RAE
								FINAL APPROVAL		PM-997 <del>Ø</del>
								FINISH & SPEC. NO.		
								ELEC. DES. APP.		
								MECH. DES. APP.		