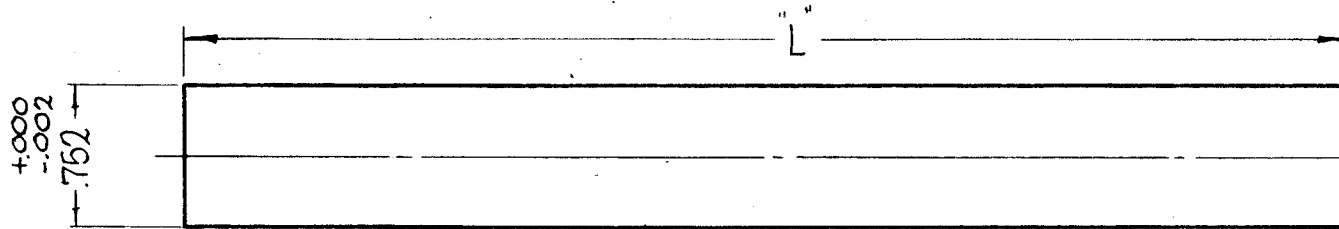


DRILL & PIN UPON ASSY.
(1/8 DIA. STEEL PIN)

COUPLING, SHAFT
MAT'L - STAINLESS STEEL (NON MAGNETIC).
FINISH - S-104 - PASSIVATE.

- PM-983-1 2 REQ
- PM-983-2 2 REQ
- PM-983-3 2 REQ
- PM-983-4 2 REQ



SHAFT
MAT'L - SILICONE GLASS, TYPE - G-7

TMC PT. NO.	"L"	REQ/ASSY
PM-983-1	17"	1
PM-983-2	19-1/16	1
PM-983-3	24-1/4	1
PM-983-4	16-1/8	1

Q'TY./UNIT	MODEL USED ON	ASS'Y. NO.
SCALE 1" = 1"	CODE	

THE CONTENTS OF THIS DRAWING ARE THE EXCLUSIVE PROPERTY OF THE TECHNICAL MATERIEL CORP. ITS UNAUTHORIZED USE OR REPRODUCTION IN WHOLE OR IN PART IS STRICTLY FORBIDDEN.

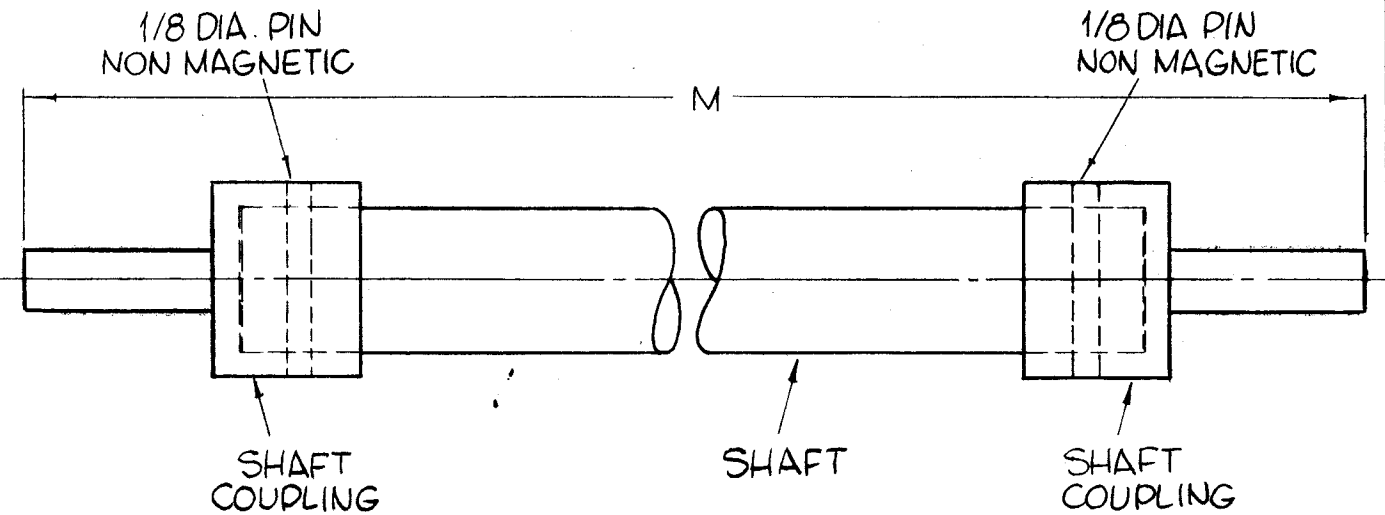
NOTES

PM-983

REVISIONS

SYM	DESCRIPTION	DATE	E.M.N. NO.	DRAFT	CHKD	APPD
X3	PM 983-3 ADDED	10-23-63		SRG		
X4	ON PM 983-1 SHAFT DIM 17" WAS 17-5/16 O/A 19-1/4 WAS 19-9/16	11-6-63				
X5	ON PM-983-2 SHAFT DIM 19-1/16 WAS 19-3/8 O/A 21-5/16 WAS 21-5/8	11-11-63				
X6	PM-983-4 ADDED					
0	ORIGINAL RELEASE FOR PRODUCTION	5-18-64		SRG		

TMC PT. NO.	"M"	REQ/UNIT	USED ON
PM-983-1	19-1/4	1	AX-395 (TUNE)
PM-983-2	21-5/16	1	AX-395 (LOAD)
PM-983-3	26-1/2	1	AX-395 (π 2)
PM-983-4	18-3/8	1	AX-395



FINAL ASSY

REQ'D.	ITEM	PART NUMBER	DESCRIPTION	SYMBOL
		F. BUDETTI	LIST OF MATERIAL	

MATERIAL THE TECHNICAL MATERIEL CORP.
MAMARONECK, NEW YORK

FINISH TITLE
SHAFT, CAPACITOR DRIVE

UNLESS OTHERWISE SPECIFIED DIMENSIONS ARE IN INCHES AND INCLUDE CHEMICALLY APPLIED OR PLATED FINISHES	DRAWN John C. Biale	DATE 10-5-63	FINAL APPROVAL RSC	DATE
DECIMALS .X ± .05 .XX ± .01 .XXX ± .005	CHECKED aa	DATE	DATE	DATE
FRACTIONS ± 1/64 ANGLES ± 0° 30'	ELECT. DES. JCB	DATE 9/19/64	DATE	DATE
TOLERANCES	MECH. DES. M. H. G. 4	DATE	DATE	DATE
			PM-983	0
			SHEET	REV. LTR.