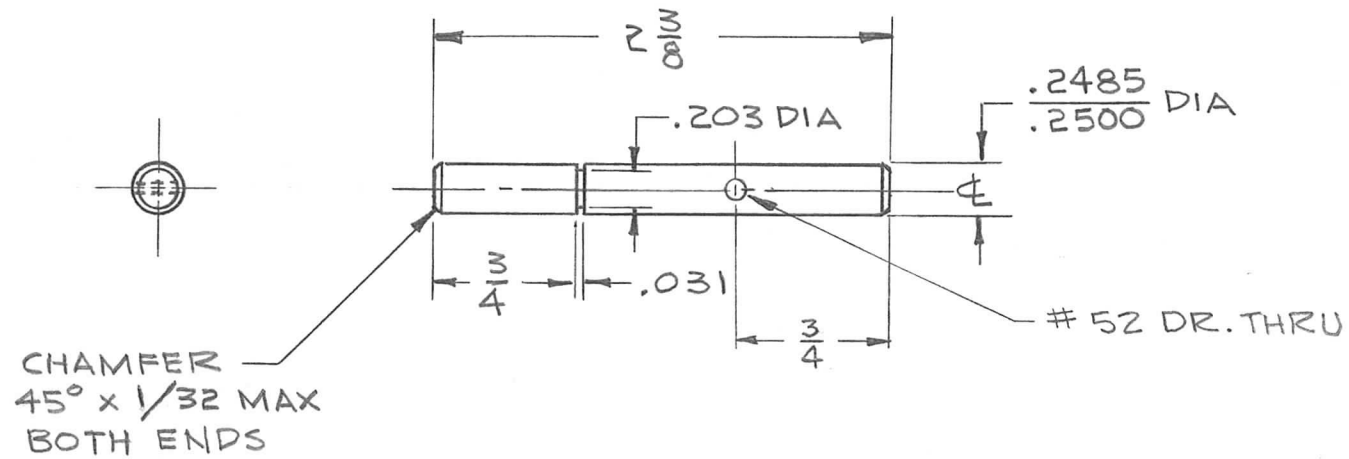


REQ. PER UNIT	USED ON			PM-965	B
	MODEL	ASS'Y. NO.	DATE		
2	CHG-2A		8-9-63		



							REQ. ITEM	PART NO.	DESCRIPTION	SYMBOL	
									KRUY		
							.250 ROD		THE TECHNICAL MATERIEL CORP.		
							STOCK SIZE		MAMARONECK, NEW YORK		
B	3/4 FROM PIN HOLE WAS $\frac{25}{32}$		9.17.64	12401	WB	@	BRASS		SHAFT, DETENT		
A	#52 DR. ADDED		1/2/64	10766	WB	@	MATERIAL				
SYM	DESCRIPTION		DATE	CH. NO.	DRAFTS	CHECKER	ENG. APP.				
UNLESS OTHERWISE SPECIFIED DIMENSIONS ARE IN INCHES AND INCLUDE CHEMICALLY APPLIED OR PLATED FINISHES							SCALE	1/1			
							1/2 H		JAZ	JHE 8/22/63	BP
							TYPE & TEMPER	HEAT TREAT. SPEC.	DRAWN	CHECKED	FINAL APPROVAL
							FLASH CADMIUM PLATE YEL IRIDITE			TAK	
							FINISH & SPEC. NO.	ELEC. DES. APP.	MECH. DES. APP.	PM-965	B
DECIMALS	TOLERANCES		FRACTIONS	CODE							
.X $\pm .05$			$\pm 1/64$								
.XX $\pm .01$			ANGLES								
.XXX $\pm .005$			$\pm 0^\circ 30'$								