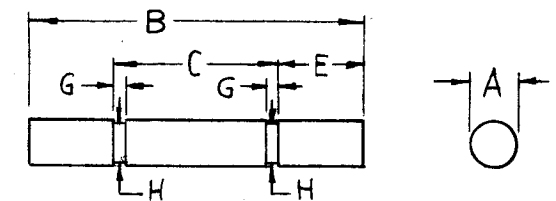
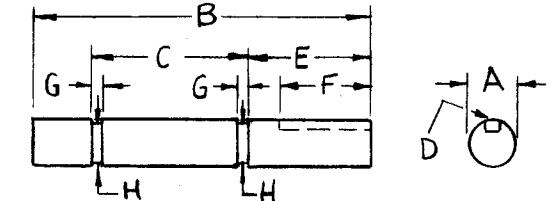


TMC NO.	STYLE	A	B	C	D	E	F	G	H	MODEL	REQ.
PM-955-1	1	.1875 ^{+0.0000} / _{-0.0005}	2-1/32 ^{+0.00} / _{-1/64}	—	—	.281	—	.037 ^{+0.01} / _{-0.00}	.177 ^{+0.01} / _{-0.02}	GPT-200K A-3202/A-3204	2EA
-2	2	.1875 ^{+0.0000} / _{-0.0005}	2-1/2	1.125 ^{+0.005} / _{-0.000}	1/16 WIDE .070 DEP.	.281	1/2	.037 ^{+0.01} / _{-0.00}	.177 ^{+0.01} / _{-0.02}	GPT-200K A-3202/A-3204	2EA
-3	3	.375 ^{+0.001} / _{-0.000}	1-3/8	.312 ± .005	—	—	—	—	—	GPT-200K A-3242	1
-4	3	.250	6-1/8	13/64	—	—	—	—	—	AT-105	1

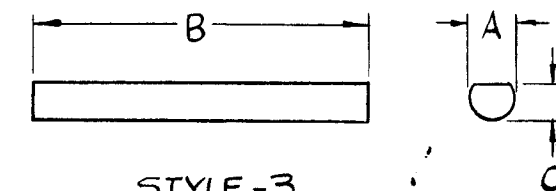
REVISIONS						
SYM	DESCRIPTION	DATE	E.M.N. NO.	DRAFT	CHKD	APPD
Y1	REDRAWN, GROOVES ADDED	3-5-64				
0	ORIGINAL RELEASE FOR PRODUCTION	5-16-64		SRG		



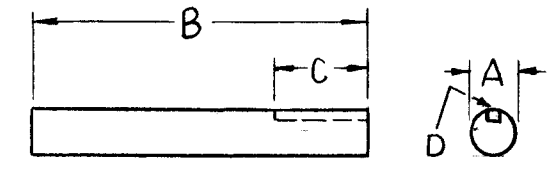
STYLE-1



STYLE-2



STYLE-3



STYLE-4

REQ'D.	ITEM	PART NUMBER	DESCRIPTION	SYMBOL
--------	------	-------------	-------------	--------

F. BUDETTI		LIST OF MATERIAL		
MATERIAL	STAINLESS STEEL (303)	THE TECHNICAL MATERIEL CORP. MAMARONECK, NEW YORK		
FINISH	S-104-PASSIVATE	TITLE SHAFT, ROUND		

UNLESS OTHERWISE SPECIFIED DIMENSIONS ARE IN INCHES AND INCLUDE CHEMICALLY APPLIED OR PLATED FINISHES		DRAWN	SRG	DATE	3-4-64	FINAL APPROVAL	RSC	DATE	
DECIMALS .X ± .05 .XX ± .01 .XXX ± .005		CHECKED	aa	DATE		ELECT. DES.		DATE	3/16/64
FRACTIONS ± 1/64 ANGLES ± 0° 30'		TOLERANCES		MECH. DES.		DATE		DATE	
THE CONTENTS OF THIS DRAWING ARE THE EXCLUSIVE PROPERTY OF THE TECHNICAL MATERIEL CORP. ITS UNAUTHORIZED USE OR REPRODUCTION IN WHOLE OR IN PART IS STRICTLY FORBIDDEN.		SHEET		PM-955		REV. LTR.		0	

NOTES