

THE CONTENTS OF THIS DRAWING ARE THE EXCLUSIVE PROPERTY OF THE TECHNICAL MATERIEL CORP. ITS UNAUTHORIZED USE FOR REPRODUCTION IN WHOLE OR IN PART IS STRICTLY FORBIDDEN.

REQ. PER UNIT

1

USED ON

MODEL

GPT-200K

ASS'Y. NO.

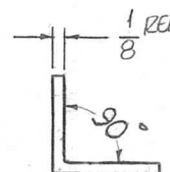
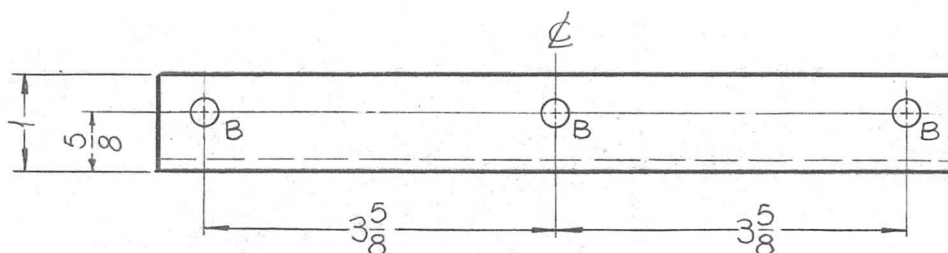
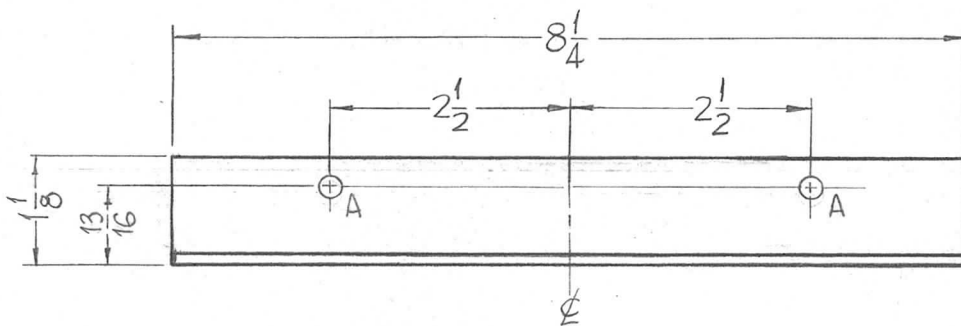
AX-395

DATE

6-27-63

PM-952

Ø



HOLE	DESCRIPTION	REQ.
A	7/32 DIA.	2
B	15/64 DIA.	3

REQ.	ITEM	PART NO.	F. BUDETTI	DESCRIPTION	SYMBOL												
0	ORIG. RELEASE FOR PROD.	5-5-6A	SRG	1-1/8 X 1 X 1/8 THICK STOCK SIZE	THE TECHNICAL MATERIEL CORP. MAMARONECK, NEW YORK												
X	1 1/8 DIM WAS 1", 13/16 DIM WAS 3/4	10-24-63		ALUMINUM	BRACKET, DECOUPLER MTG.												
SYM	DESCRIPTION	DATE	CH. NO.	DRAFTS	CHECKER	ENG. APP.	MATERIAL	6063	T5	SRG	aa	RAC					
UNLESS OTHERWISE SPECIFIED DIMENSIONS ARE IN INCHES AND INCLUDE CHEMICALLY APPLIED OR PLATED FINISHES							SCALE	1/2	TYPE & TEMPER				HEAT TREAT. SPEC.	DRAWN	CHECKED	FINAL APPROVAL	
DECIMALS	.X ± .05	TOLERANCES	FRACTIONS	± 1/64	ANGLES	± 0° 30'	CODE	A	5404-IRIDITE				ELEC. DES. APP.		MECH. DES. APP.	PM-952	Ø
							FINISH & SPEC. NO.		ELEC. DES. APP.		MECH. DES. APP.						