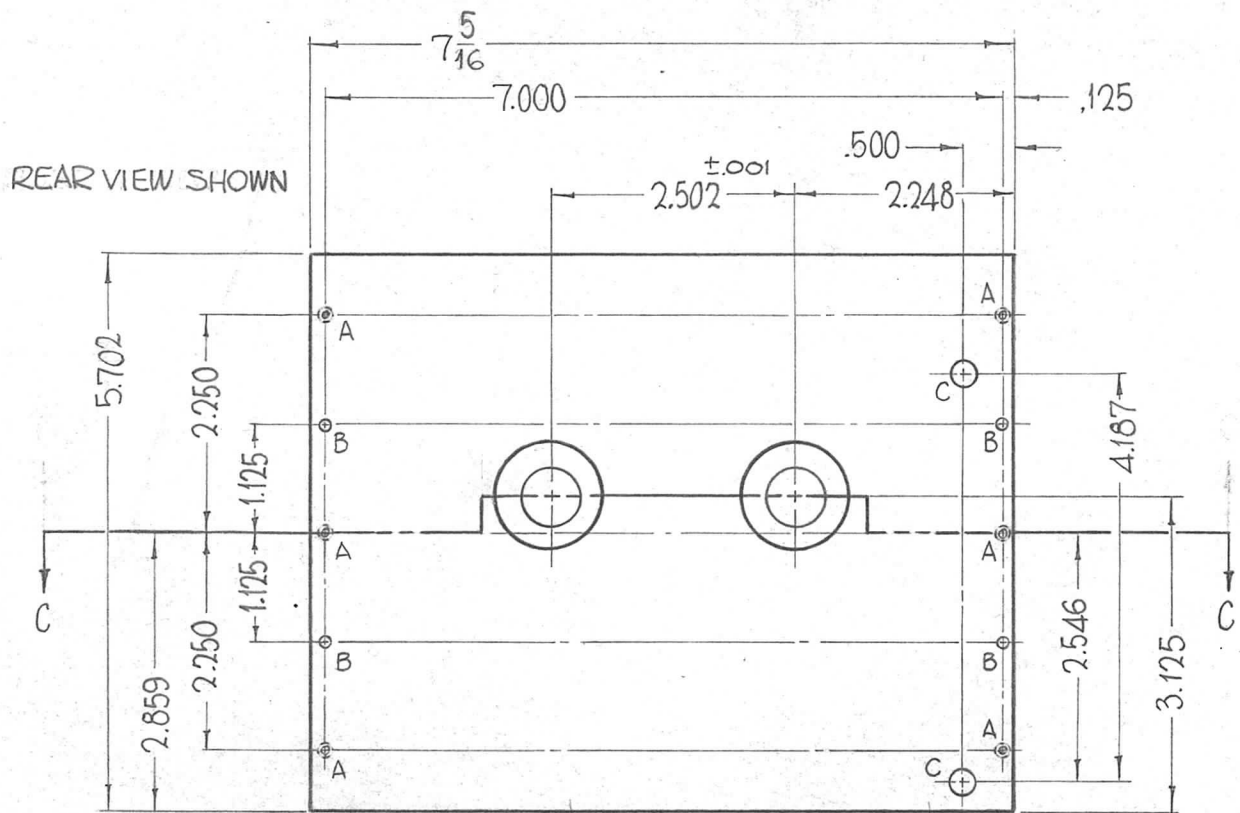


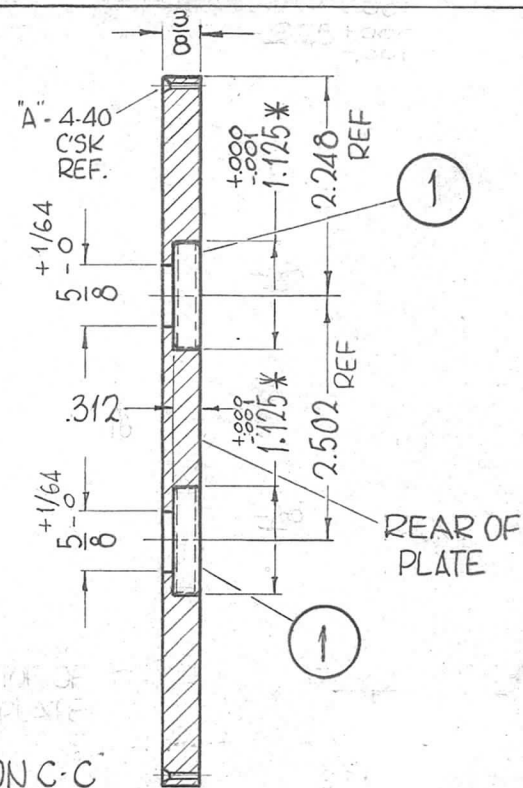
THE CONTENTS OF THIS DRAWING ARE THE EXCLUSIVE PROPERTY OF THE TECHNICAL MATERIEL CORP. ITS UNAUTHORIZED USE OR REPRODUCTION IN WHOLE OR IN PART IS STRICTLY FORBIDDEN.

REQ. PER UNIT	USED ON		DATE	PM-924	Ø
	MODEL	ASS'Y. NO.			
1	GPT-200K (AX-395)	A-3239	6-12-63		

* BEARINGS, ITEM 1 (BB-120-3) TO BE (WRINGING) FIT (PRESS), INSERTED AFTER MACHINING AND IRIDITING.



HOLES	REQ.
A- DRILL & C'SK 4-40 FROM REAR	6
B-.156 DIA THRU	4
C- 5/16 DIA. THRU	2
D-.089 DIA. X 1/4 DEEP	4



METAL STAMP TMC PART NO. 1/8 HIGH GOTHIC.

OPPOSITE SIDE SAME

						2	1	BB-120-3	BEARING, RACE	
						AS NOTED		F. BUDETTI DESCRIPTION		
						STOCK SIZE		THE TECHNICAL MATERIEL CORP.		
						ALUMINUM		MAMARONECK, NEW YORK		
						MATERIAL		PLATE, RETAINING		
						2024-T4		CAP. GEAR BOX (LOAD)		
						5-404-IRIDITE, 14-2 AL-COAT		John C Biale	aa	Rde 3-30-64
						FINISH & SPEC. NO.		DRAWN	CHECKED	FINAL APPROVAL
								203	BC	PM-924
								ELEC. DES. APP.	MECH. DES. APP.	Ø

UNLESS OTHERWISE SPECIFIED: A
 DIMENSIONS ARE IN INCHES
 TOLERANCES ON
 FRAC. ± 1/64 DEC. ± .005 ANGLES ± 1/2°

SCALE: #
 MAXIMUM ALLOWABLE TOLERANCES HAVE BEEN DETERMINED AND ANY DEVIATIONS WILL BE CAUSE FOR REJECTION.
 REMOVE ALL BURRS AND SHARP EDGES