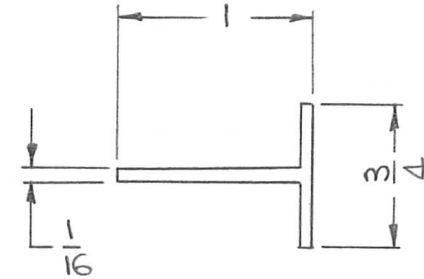
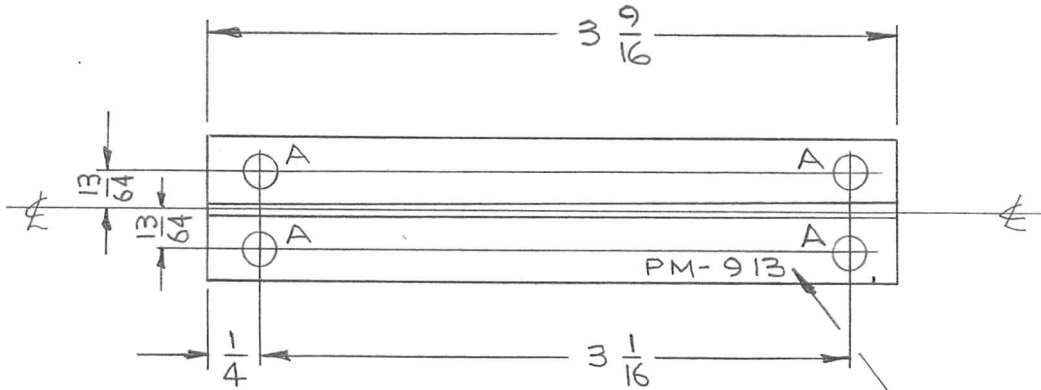


THE CONTENTS OF THIS DRAWING ARE THE EXCLUSIVE PROPERTY OF THE TECHNICAL MATERIEL CORP. ITS UNAUTHORIZED USE FOR REPRODUCTION IN WHOLE OR IN PART IS STRICTLY FORBIDDEN.

REQ. PER UNIT 1	USED ON		
	MODEL TTR-10	ASS'Y. NO.	DATE 5-25-63
PM 913			

A ~ 3/16 DIA ~ 4 HOLES



METAL STAMP TMC PART NO. 1/8 HIGH GOTHIC.

NOTE:
1. REMOVE ALL BURRS & SHARP EDGES.

SYM	DESCRIPTION	DATE	CH. NO.	DRAFTS	CHECKER	ENG. APP.	REQ. ITEM	PART NO.	JORDAN DESCRIPTION	E3037-80	SYMBOL
							.064		THE TECHNICAL MATERIEL CORP. MAMARONECK, NEW YORK		
							EXTRUDED ALUM ALCOA DIE # 2072		GUIDE, MODULE, "T" TYPE		
							MATERIAL		"T" TYPE		
							6063-T5		Drawn	10-5-63	BP
							TYPE & TEMPER	HEAT TREAT. SPEC.	DRAWN	CHECKED	FINAL APPROVAL
							5404 YELLOW IRIDITE		R KOHN	W. JORDAN	PM-913
							FINISH & SPEC. NO.		ELEC. DES. APP.	MECH. DES. APP.	