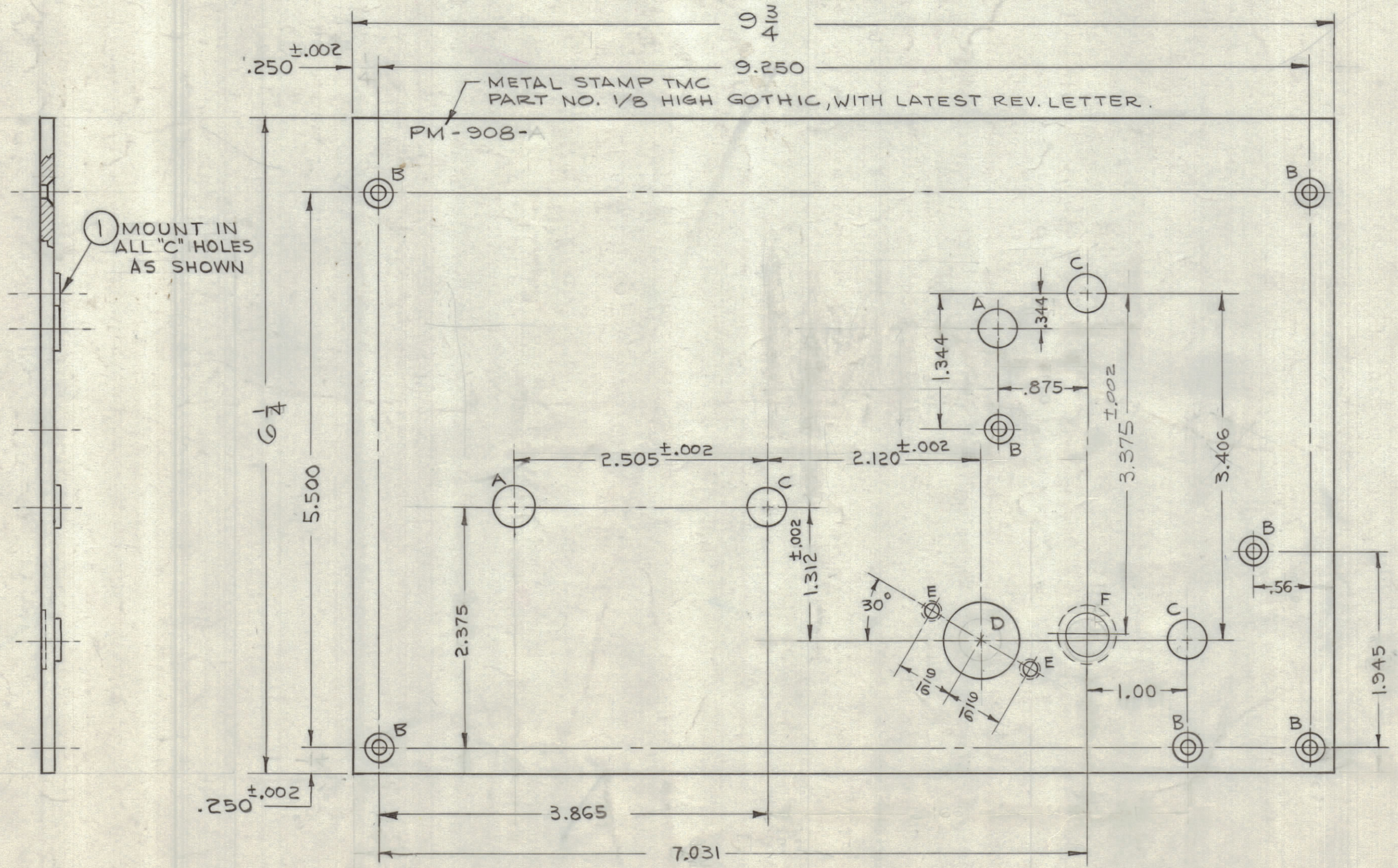


REVISIONS							
ZONE	SYM	DESCRIPTION	DATE	E.M.N. NO.	DRAFT	CHKD	APPD
-	A	6/4 WAS 6/2, BB-118-36 WAS BB-118-3, RELOCATE "F" HOLE.	12/6/63	10534			
-	B	9/16 C'BORE WAS 7/32 DIA "F" HOLE	1/20/64	10765			
-	C	"F" HOLE WAS 9/16 DIA X 1/16 DR. C'BORE	7-30-64	11977	SRG	RSJ	FR
-	D	"A" HOLE WAS 1 REQ, "C" HOLE WAS 4 REQ. ITEM 1 WAS 4 REQ.	9.23.64	12383	MB		

HOLE	DESCRIPTION	REQD
A	13/32 DIA	2
B	DRILL & CSK FOR 6-32	7
C	.375 ^{+0.000} / _{-0.005} DIA. BEARING (PRESS FIT)	3
D	3/4 DIA	1
E	DRILL & TAP FOR 8-32	2
F	DRILL 13/32 DIA. HOLE # C'BORE 5/8 DIA. X 1/16 DEEP	1

H
G
F
E
D
C
B
A



- NOTES :
1. REMOVE ALL BURRS AND SHARP EDGES.
 2. INSTALL ITEM 1 AFTER FINISHING.

3	1	BB-118-36	BEARING, FLANGE TYPE	
REQ'D.	ITEM	PART NUMBER	DESCRIPTION	SYMBOL
KRU		LIST OF MATERIAL		
MATERIAL		1/8 THK ALUMINUM, 2024-T4		
FINISH		S-404 YEL IRIDITE		
THE TECHNICAL MATERIEL CORP.		MAMARONECK, NEW YORK		
TITLE		PLATE, GEAR SUPPORT # 2		
DRAWN	DATE	FINAL APPROVAL	DATE	
CHECKED	DATE			
ELECT. DES.	DATE	PM-908	D	
MECH. DES.	DATE			
SHEET		REV. LTR.		

1	CHG-2A	6-28-63
Q'TY./UNIT	MODEL USED ON	ASS'Y. NO.
SCALE	CODE	
THE CONTENTS OF THIS DRAWING ARE THE EXCLUSIVE PROPERTY OF THE TECHNICAL MATERIEL CORP. ITS UNAUTHORIZED USE OR REPRODUCTION IN WHOLE OR IN PART IS STRICTLY FORBIDDEN.		

NOTES

PM-908 D