

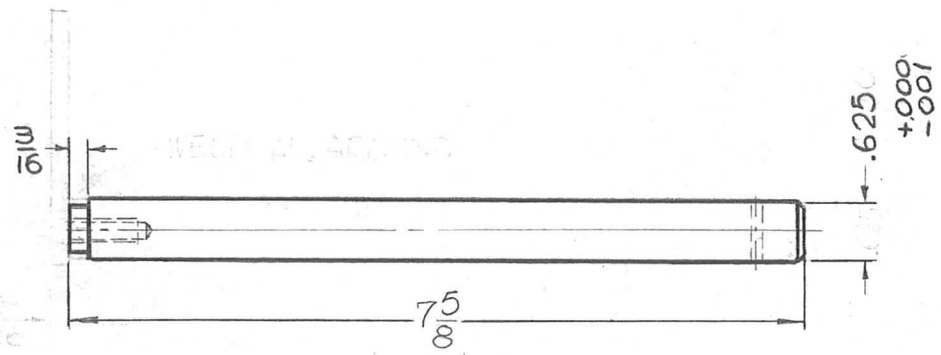
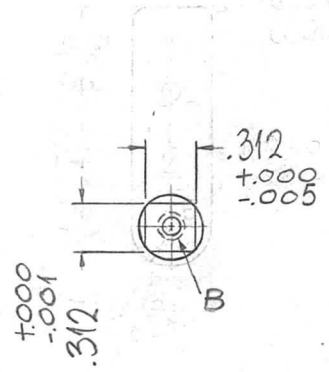
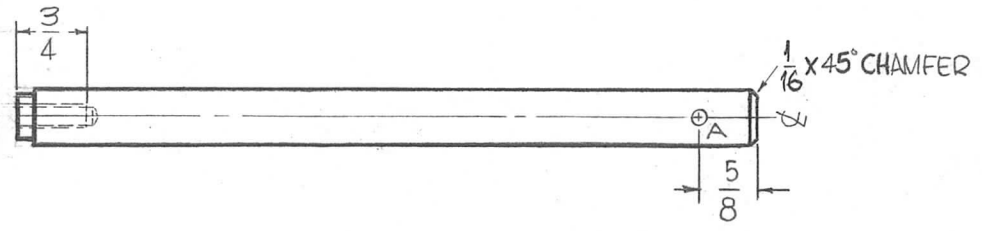
THE CONTENTS OF THIS DRAWING ARE THE EXCLUSIVE PROPERTY OF THE TECHNICAL MATERIEL CORP. ITS UNAUTHORIZED USE FOR REPRODUCTION IN WHOLE OR IN PART IS STRICTLY FORBIDDEN.

REQ. PER UNIT	USED ON		
	MODEL	ASS'Y. NO.	DATE
1	GPT-200K	A-2706	3-18-63

PM-899 0

HOLE:

* A ~ .125 $\begin{smallmatrix} +.004 \\ -.000 \end{smallmatrix}$ (1REQ.)
 * B ~ 1/4-20 TAP (1REQ.)



* PIN UPON ASSEMBLY.

REQ.	ITEM	PART NO.	F. BUDETTI	DESCRIPTION	SYMBOL						
0	ORIG RELEASE FOR PROD.	5-27-64	SRG	AS NOTED	THE TECHNICAL MATERIEL CORP. MAMARONECK, NEW YORK						
X2	5/8 WAS 1/2			STOCK SIZE							
X1	.3125 $\begin{smallmatrix} +.000 \\ -.001 \end{smallmatrix}$ SQ WAS 1/2 SQ $\begin{smallmatrix} +.000 \\ -.0003 \end{smallmatrix}$ 1/16 X 45° CHAMFER WAS 1/16 X 45° BRANCH	1-15-64		STAINLESS STEEL	SHAFT, GEAR MTG.						
SYM	DESCRIPTION	DATE	CH. NO.	DRAFTS	CHECKER	ENG. APP.	MATERIAL				
UNLESS OTHERWISE SPECIFIED DIMENSIONS ARE IN INCHES AND INCLUDE CHEMICALLY APPLIED OR PLATED FINISHES			SCALE			303		SRG	SRG	SRG	
			1/2" = 1"			TYPE & TEMPER		HEAT TREAT. SPEC.	DRAWN	CHECKED	FINAL APPROVAL
DECIMALS .X ± .05 .XX ± .01 .XXX ± .005			FRACTIONS ± 1/64 ANGLES ± 0° 30'			CLEAR PASSIVATE					PM-899 0
TOLERANCES			CODE			FINISH & SPEC. NO.		ELEC. DES. APP.	MECH. DES. APP.		