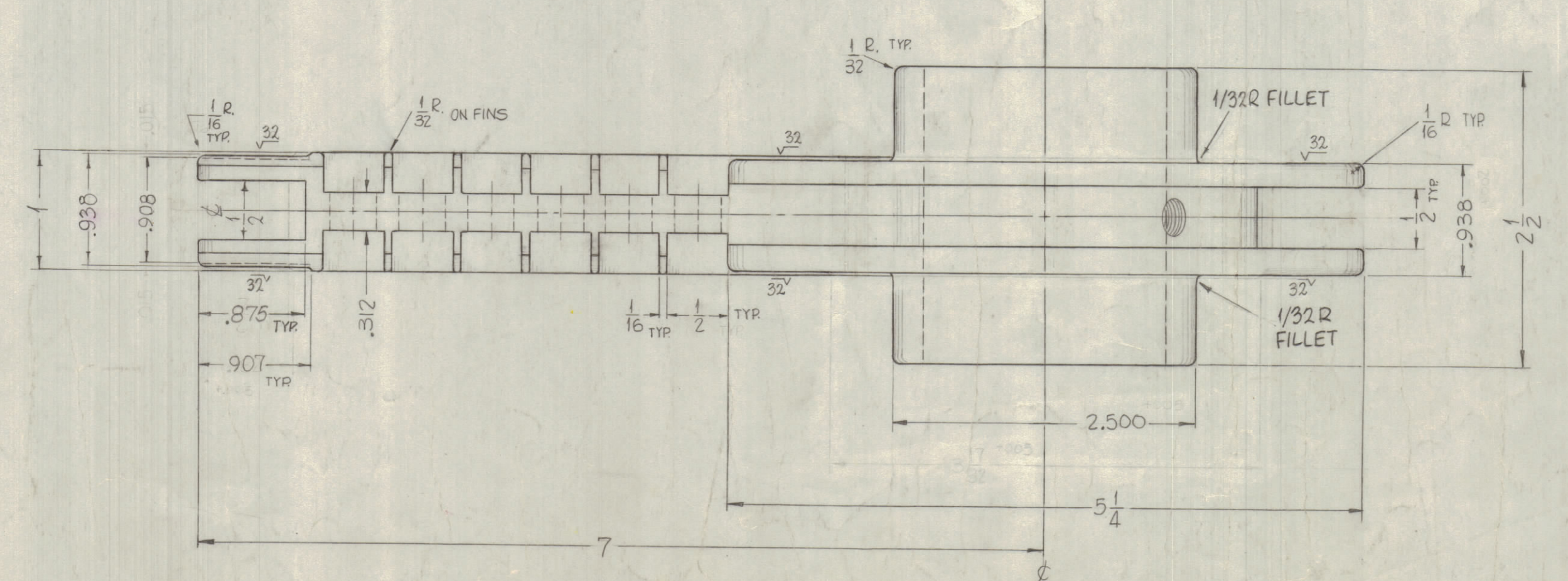
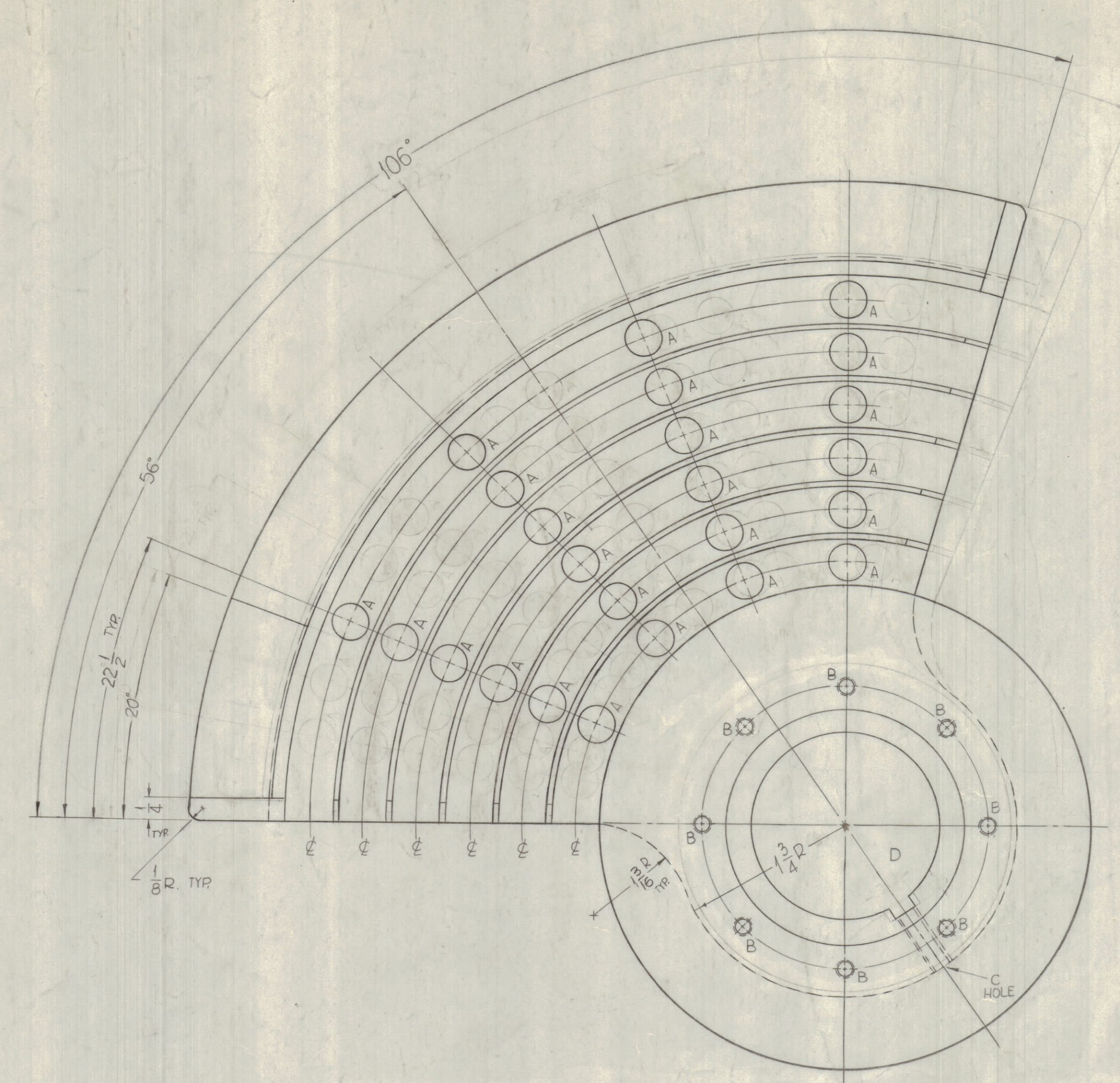
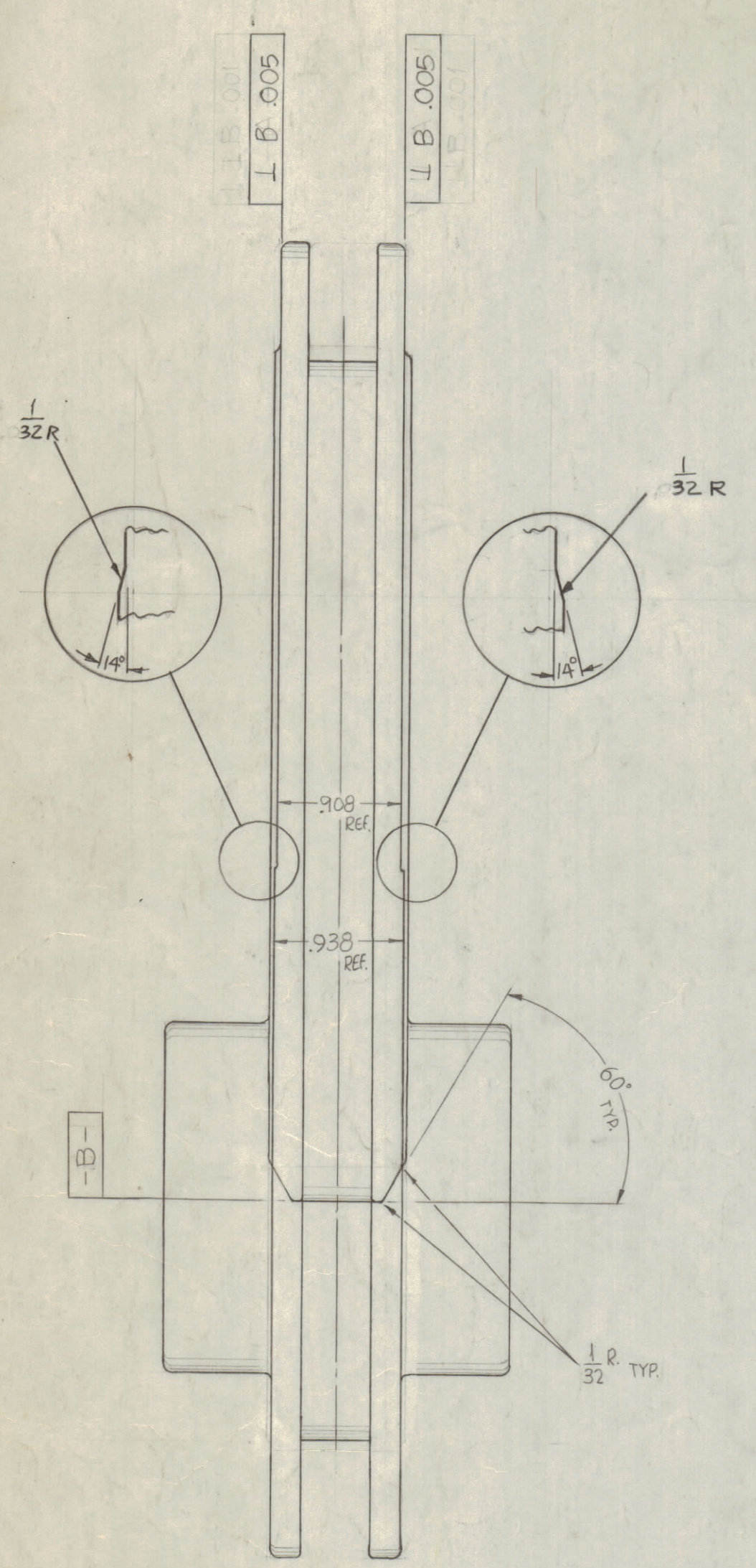
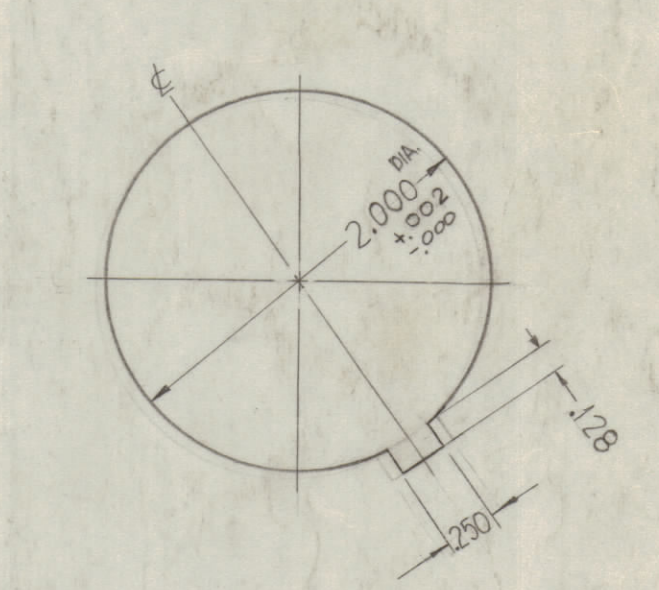


REVISIONS							
ZONE	SYM	DESCRIPTION	DATE	E.M.N. NO.	DRAFT	CHKD	APPD
0		ORIGINAL RELEASE FOR PRODUCTION	5.18.64				
A		14° ANGLE DETAILS ADDED.	5.11.65	14.072			



HOLES	REQ
A - 3/8 DIA.	24
B - 8-32 TAP THRU (OPTION PER MFG) 45° APART ON A 3-1/8 DIA. (+0.05).	8
C - 1/4-20 TAP	1
D - SEE DETAIL	



NOTE:
ROUND ALL ROUGH EDGES,
REMOVE ALL SHARP CORNERS
POLISH BEFORE PLATING.

NOTES

QTY/UNIT	MODEL USED ON	ASSY. NO.
1	GPT-200K AS-123	AX-446
SCALE	CODE	

THE CONTENTS OF THIS DRAWING ARE THE EXCLUSIVE PROPERTY OF THE TECHNICAL MATERIEL CORP. ITS UNAUTHORIZED USE OR REPRODUCTION IN WHOLE OR IN PART IS STRICTLY FORBIDDEN.

REQ'D	ITEM	PART NUMBER	DESCRIPTION	SYMBOL
F. BUDVITI LIST OF MATERIAL				
MATERIAL		THE TECHNICAL MATERIEL CORP. MAMARONECK, NEW YORK		
FINISH		8245-SILVER PLATE, BRIGHT		
TITLE		= ROTOR BANDSWITCH =		
DRAWN	SRG	DATE	12-4-62	FINAL APPROVAL
CHECKED	DA	DATE		
ELECT. DES.		DATE		
MECH. DES.		DATE		
DECIMALS	TOLERANCES		FRACTIONS	
.X ± .05	± 1/64		ANGLES	
.XX ± .01	± 1/64		± 0° 30'	
.XXX ± .005				
REV. LTR.		PM-861 A		

PM-861 A