

THE CONTENTS OF THIS DRAWING ARE THE EXCLUSIVE PROPERTY OF THE TECHNICAL MATERIEL CORP. ITS UNAUTHORIZED USE FOR REPRODUCTION IN WHOLE OR IN PART IS STRICTLY FORBIDDEN.

REQ. PER UNIT

MODEL

USED ON ASS'Y. NO.

DATE

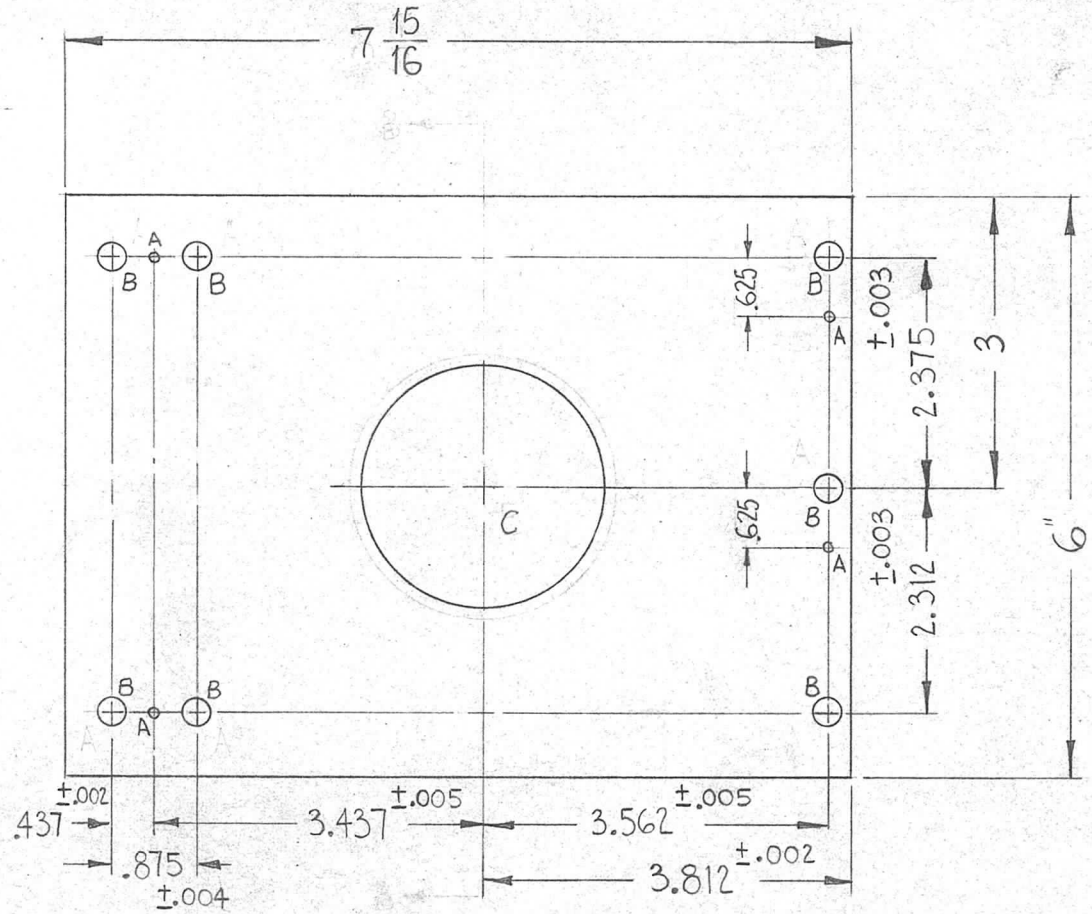
PM-855 0

1

GPT-200K (AS-123)

A-2681

5-24-63



A ~ 1/8 DIA. (SEE NOTE) 4 REQ.
 B ~ .281 DIA. 7 REQ.
 C ~ 2.5000^{+0.0000}/_{-0.0005} DIA. 1 REQ.

METAL STAMP TMC PART NO. 1/8 HIGH GOTHIC. (PM-855:0)

NOTE: SHOULD BE DRILLED & PINNED UPON ASS'Y.

1 BEARING TO BE WRINGING FIT (CLASS 5), INSERTED AFTER MACHINING & IRIDITING.

1	1	BB-120-5	BEARING, RACE	
REQ.	ITEM	PART NO.	F. BUDETTI	DESCRIPTION
		375		THE TECHNICAL MATERIEL CORP. MAMARONECK, NEW YORK
		ALUMINUM		PLATE, RETAINING BEARING
		2024-T4	W.A. FRANCO	4-7-64
		S404 YELLOW IRIDITE	BB/BG	PM-855 0

ORIGINAL RELEASE FOR PRODUCTION 3-6-64

UNLESS OTHERWISE SPECIFIED DIMENSIONS ARE IN INCHES AND INCLUDE CHEMICALLY APPLIED OR PLATED FINISHES

SCALE (DO NOT SCALE)

TOLERANCES

DECIMALS	FRACTIONS	CODE
.X ± .05	± 1/64	A
.XX ± .01	ANGLES	
.XXX ± .005	± 0° 30'	