

THE CONTENTS OF THIS DRAWING ARE THE EXCLUSIVE PROPERTY OF THE TECHNICAL MATERIEL CORP. ITS UNAUTHORIZED USE FOR REPRODUCTION IN WHOLE OR IN PART IS STRICTLY FORBIDDEN.

REQ. PER UNIT

2

MODEL

GPT-200K

USED ON

ASS'Y. NO.

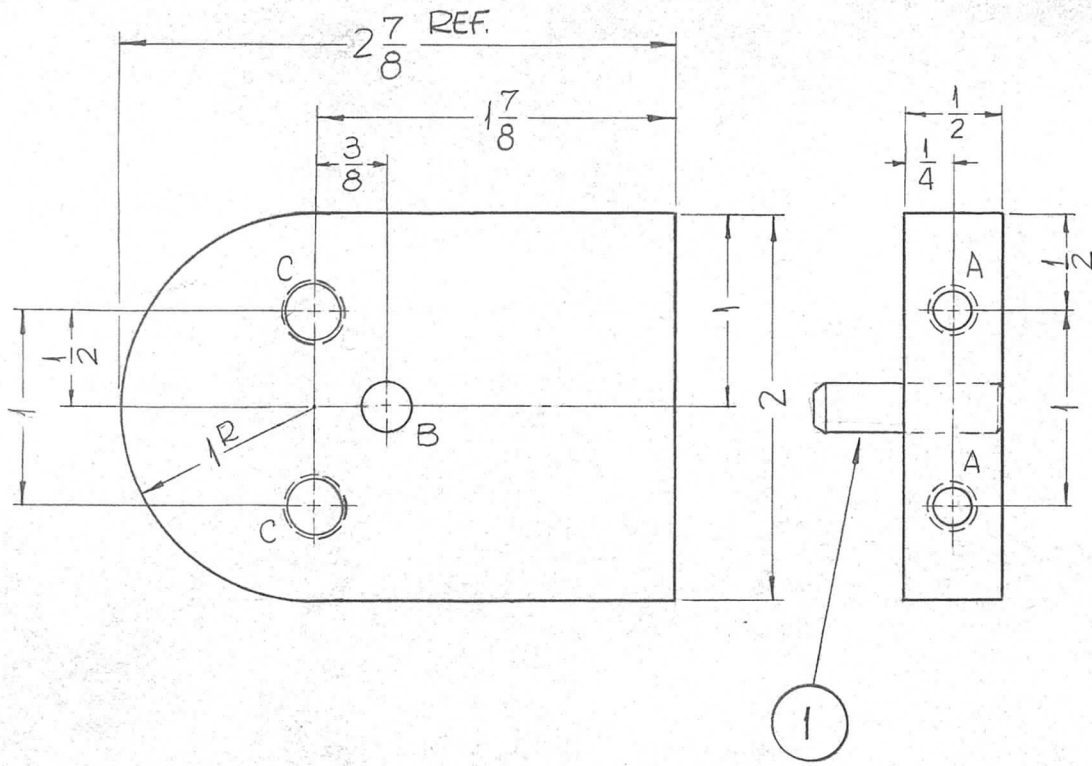
AX-395

DATE

5-9-63

PM-845

0



HOLES:

- A ~ DRILL & TAP FOR 1/4-20 X 1/2 DEEP. (2REQ.)
- B ~ .249 \pm .001 DIA. (1REQ.)
- C ~ DRILL & TAP FOR 5/16-18 THRU (2REQ.)

1	1	PN-116-C-8-S	PIN, DOWEL		
REQ.	ITEM	PART NO.	F. BUDETTI		DESCRIPTION
			1/2 THICK		THE TECHNICAL MATERIEL CORP. MAMARONECK, NEW YORK
			STOCK SIZE		
			ALUMINUM		SUPPORT, BANDSWITCH
			MATERIAL		2ND TT, REAR
		5052	H32	SRG	aa
		TYPE & TEMPER		HEAT TREAT. SPEC.	DRAWN
		S404 YELLOW IRIDITE			CHECKED
		FINISH & SPEC. NO.		ELEC. DES. APP.	MECH. DES. APP.
					PM-845 0

0	ORIGINAL RELEASE	5.16.64					
X2	PIN ADDED	3-19-64					
SYM	DESCRIPTION	DATE	CH. NO.	DRAFTS	CHECKER	ENG. APP.	
UNLESS OTHERWISE SPECIFIED DIMENSIONS ARE IN INCHES AND INCLUDE CHEMICALLY APPLIED OR PLATED FINISHES		SCALE					
DECIMALS .X \pm .05 .XX \pm .01 .XXX \pm .005	TOLERANCES	FRACTIONS \pm 1/64 ANGLES \pm 0° 30'	CODE				