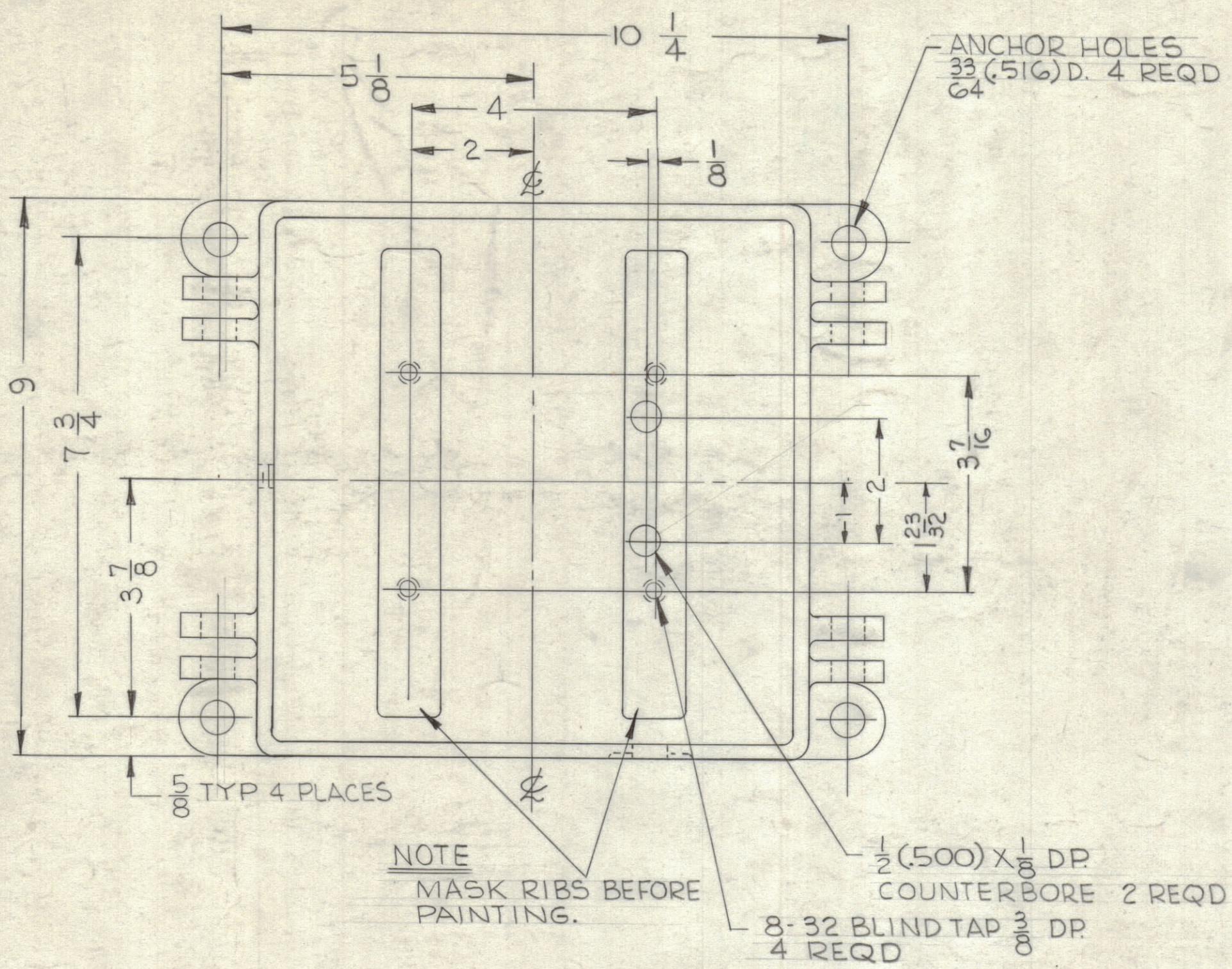


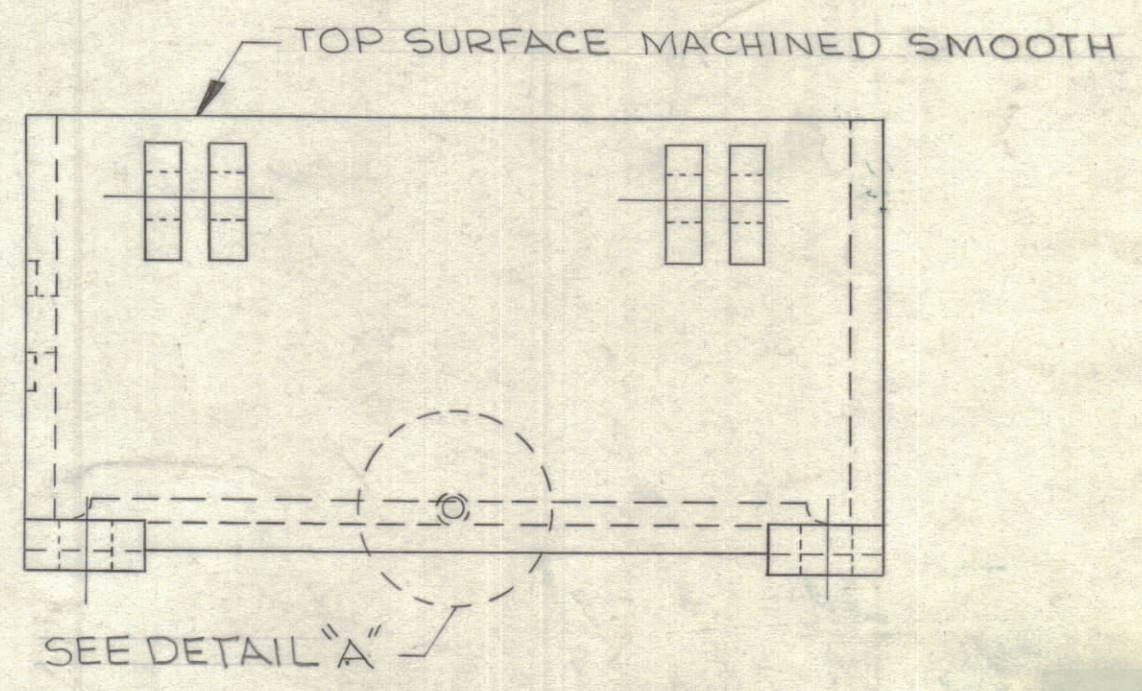
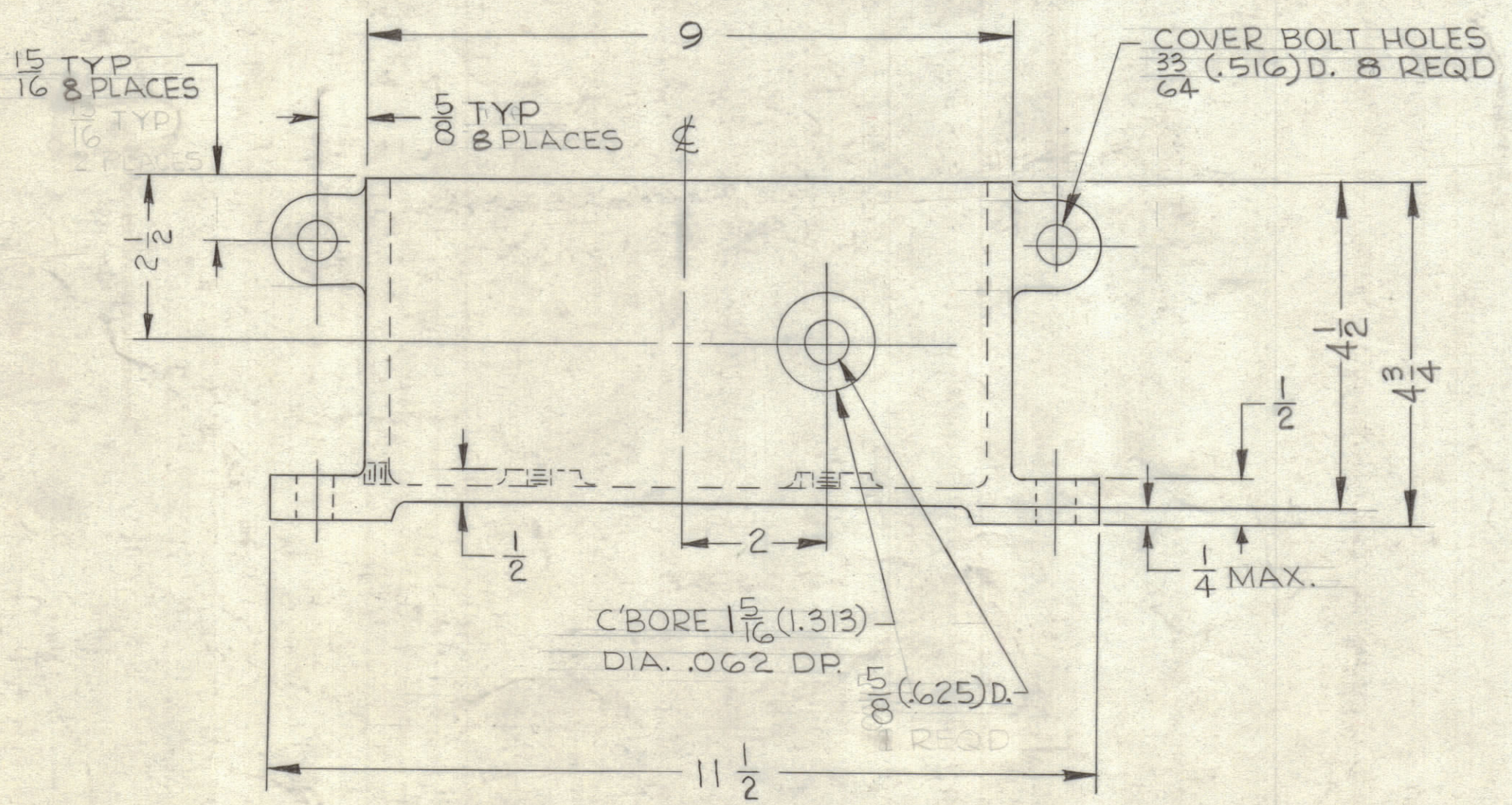
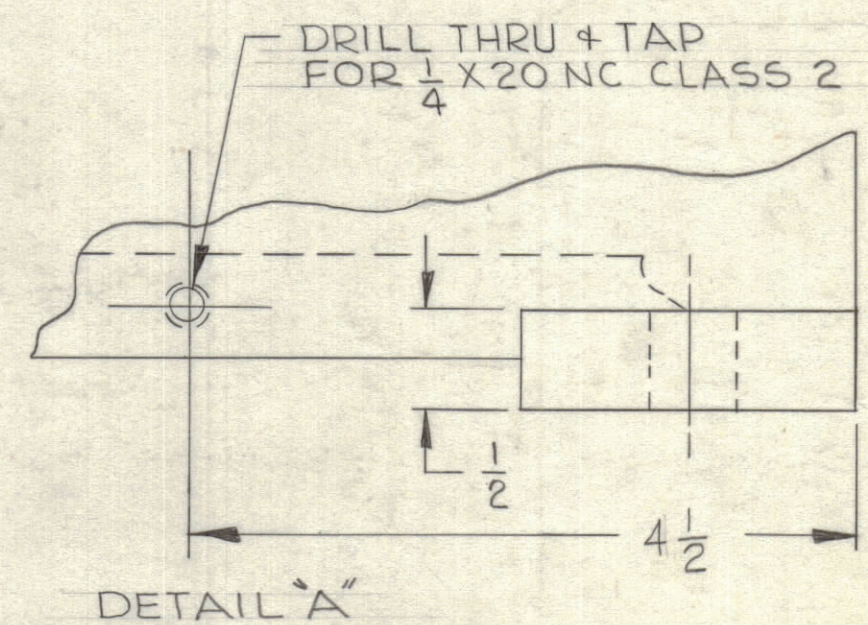
REVISIONS							
ZONE	SYM	DESCRIPTION	DATE	E.M.N. NO.	DRAFT	CHKD	APPD
	Ø	ORIGINAL RELEASE FOR PRODUCTION	12-9-68		RG		



NOTE
MASK RIBS BEFORE PAINTING.

1/2 (.500) X 1/8 DP
COUNTERBORE 2 REQD

8-32 BLIND TAP 3/8 DP
4 REQD



3. REF. CASTING DWG #CS-108
2. HEAT TREAT SPEC - STRESS RELIEVED
- 5-115 SMOOTH GREY ENAMEL
- 5-114 ZINC CROMATE PRIMER
1. S-404 YELLOW IRIDITE

NOTES

THE CONTENTS OF THIS DRAWING ARE THE EXCLUSIVE PROPERTY OF THE TECHNICAL MATERIEL CORP. ITS UNAUTHORIZED USE OR REPRODUCTION IN WHOLE OR IN PART IS STRICTLY FORBIDDEN.

REQ'D.	ITEM	PART NUMBER	DESCRIPTION	SYMBOL
	HAY		LIST OF MATERIAL	
MATERIAL		356-T6 ALUM	THE TECHNICAL MATERIEL CORP. MAMARONECK, NEW YORK	
FINISH		SEE NOTE 1	TITLE CASE, MACHINING	
UNLESS OTHERWISE SPECIFIED DIMENSIONS ARE IN INCHES AND INCLUDE CHEMICALLY APPLIED OR PLATED FINISHES		DRAWN <i>Blowin</i>	DATE 4-9-63	FINAL APPROVAL <i>gjm</i>
		CHECKED <i>gjm</i>	DATE 7-10-63	
DECIMALS .X ± .05 .XX ± .01 .XXX ± .005		TOLERANCES ± 1/64 ANGLES ± 0° 30'		ELECT. DES. DATE
		MECH. DES. DATE		DATE
		SHEET		REV. LTR.

PM-835

PM-835