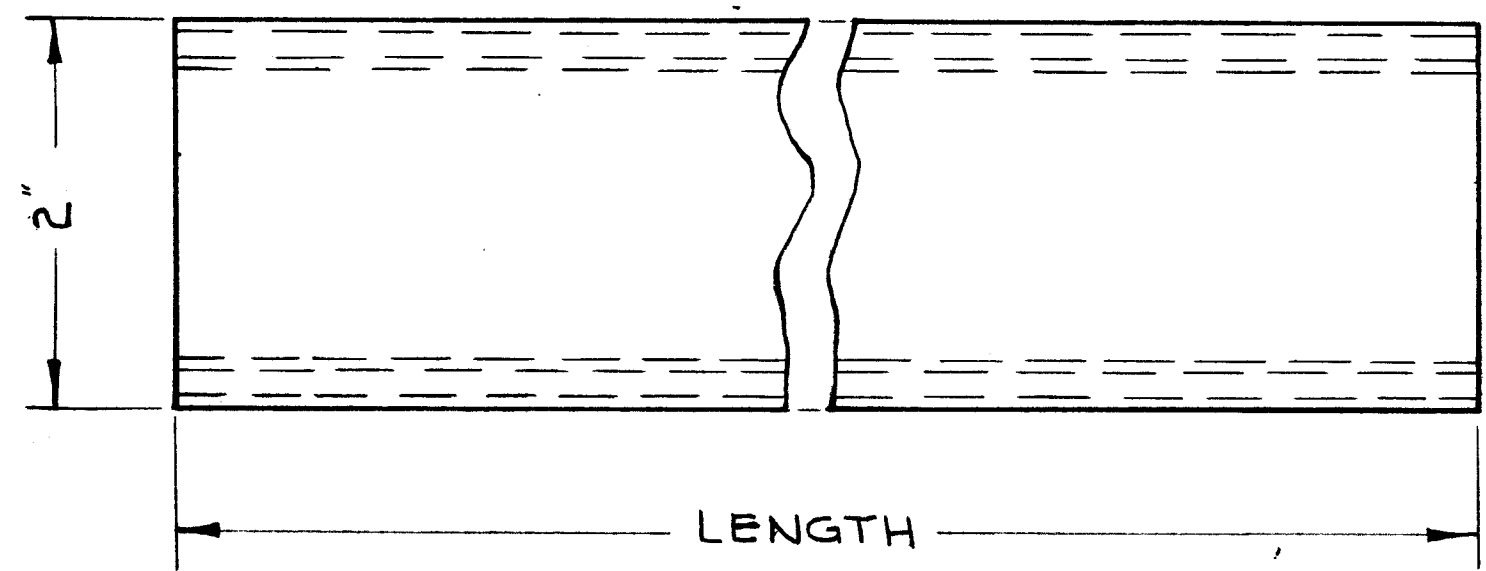
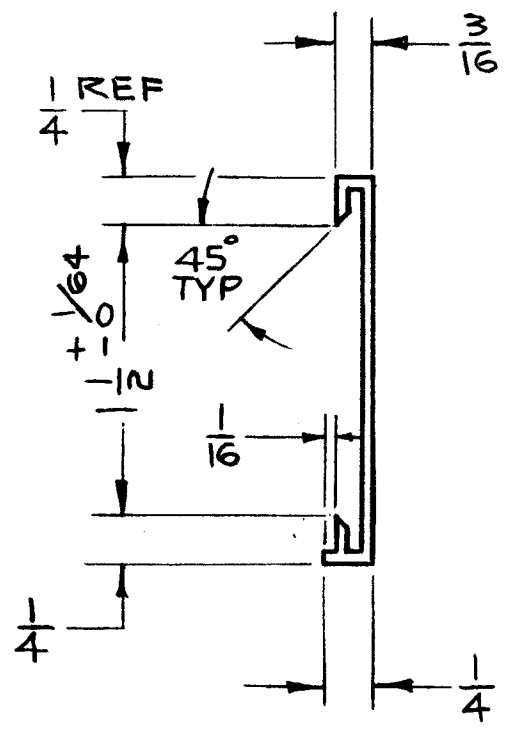


TMC NO.	DESCRIPTION	LENGTH	QTY UNIT	MODEL USED ON	ASS'Y NO. USED ON
PM-825-1	TRIM, TOP	$24\frac{1}{8} \pm \frac{9}{64}$	1	RAK-21	A-3125
PM-825-2	TRIM, SIDE	66	2	RAK-21	A-3125
PM-825-3	TRIM, TOP	$46\frac{1}{2} \pm \frac{9}{64}$	1	RAK-22	

A
PM-825

REVISIONS					
SYM	DESCRIPTION	DATE	E.M.N. NO.	DRAFT	CHKD APPD
A	PM-825-3 ADD., NOTE 3 REVISED COMPL.	8.6.64	12055	JSB	TK



- NOTES:
- EXTRUSION TO BE FREE OF GOUGES OR ANY IMPERFECTIONS.
 - MARS METAL PROD. INC., DIE # 1017 OR EQUIV.
 - FINISH: 1) FINE BRUSH
2) WIPE CLEAN WITH THINNER
3) 1 COAT WATER CLEAR FLAT BAKING EPOXY
4) BAKE 45 MIN. AT 360°F

REQ'D.	ITEM	PART NUMBER	DESCRIPTION	SYMBOL
KRU Y LIST OF MATERIAL				
MATERIAL		THE TECHNICAL MATERIEL CORP. MAMARONECK, NEW YORK		
EXTR'D ALUMINUM 6063-T5		TITLE TRIM STRIP		
FINISH		DRAWN JSB DATE 10-18-62		
SEE NOTE 3		CHECKED JDe DATE 2/23/63		
UNLESS OTHERWISE SPECIFIED DIMENSIONS ARE IN INCHES AND INCLUDE CHEMICALLY APPLIED OR PLATED FINISHES		ELECT. DES DATE		
DECIMALS .X ± .05 .XX ± .01 .XXX ± .005		MECH. DES TAK DATE 7-3-63		
FRACTIONS ± 1/64 ANGLES ± 0° 30'		FINAL APPROVAL BP		
TOLERANCES		DATE		
		SHEET		
		REV. LTR.		

Q'TY./UNIT	MODEL USED ON	ASS'Y. NO.
NO SCALE	A	

THE CONTENTS OF THIS DRAWING ARE THE EXCLUSIVE PROPERTY OF THE TECHNICAL MATERIEL CORP. ITS UNAUTHORIZED USE OR REPRODUCTION IN WHOLE OR IN PART IS STRICTLY FORBIDDEN.

NOTES