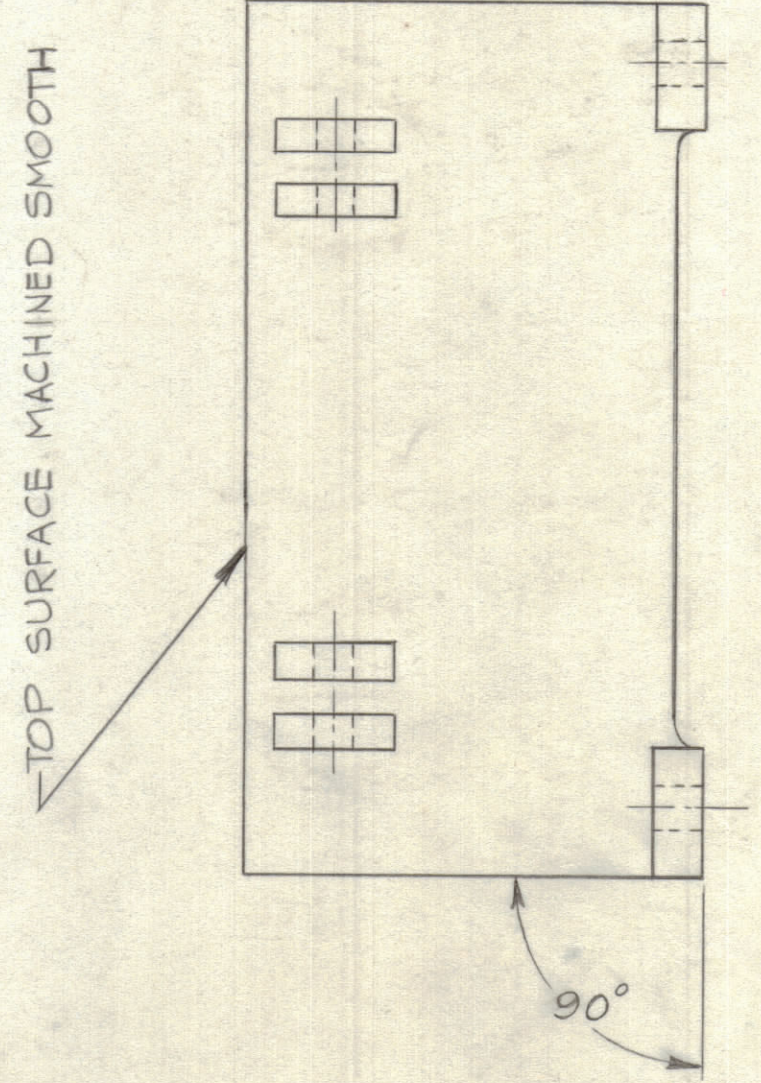
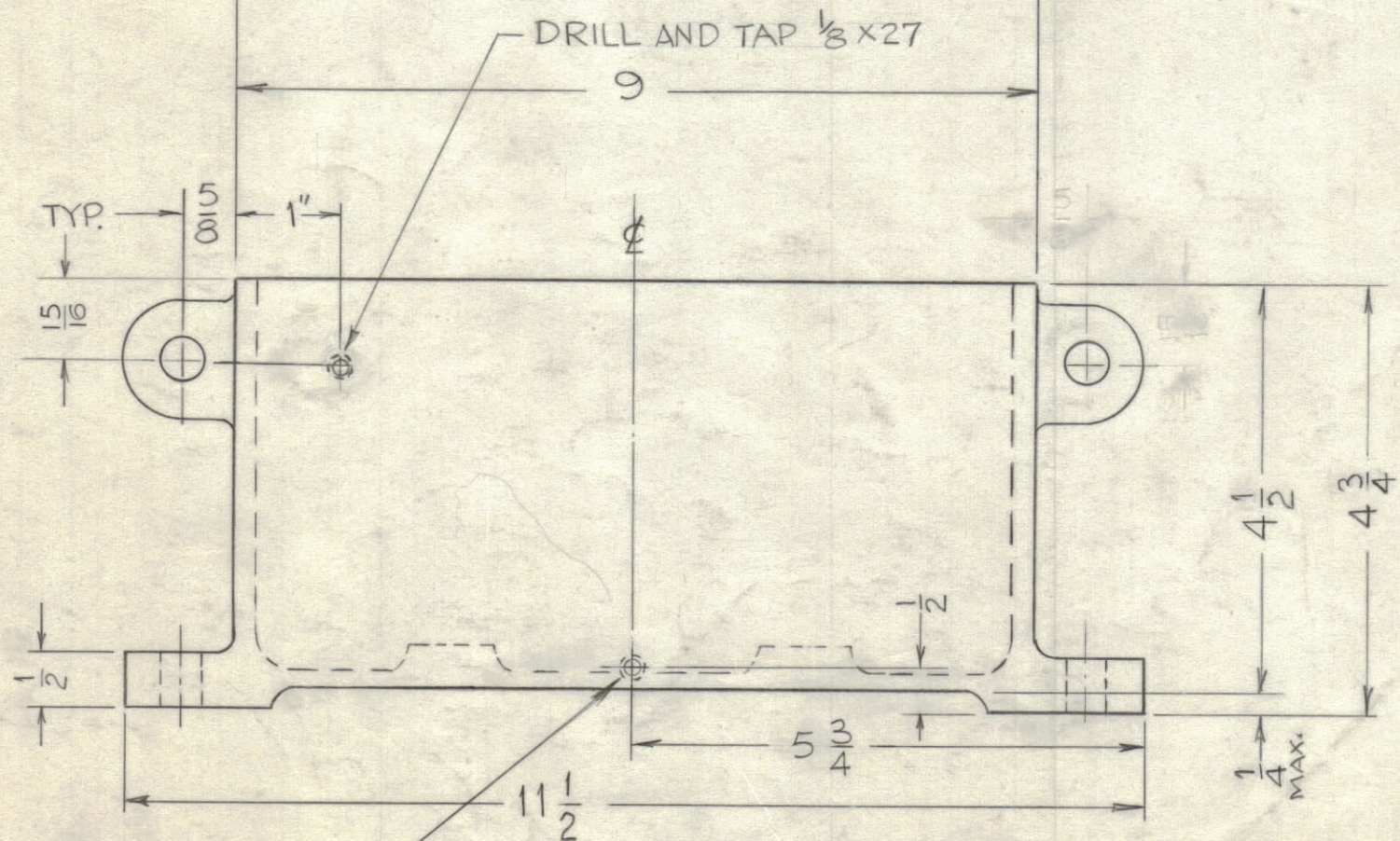
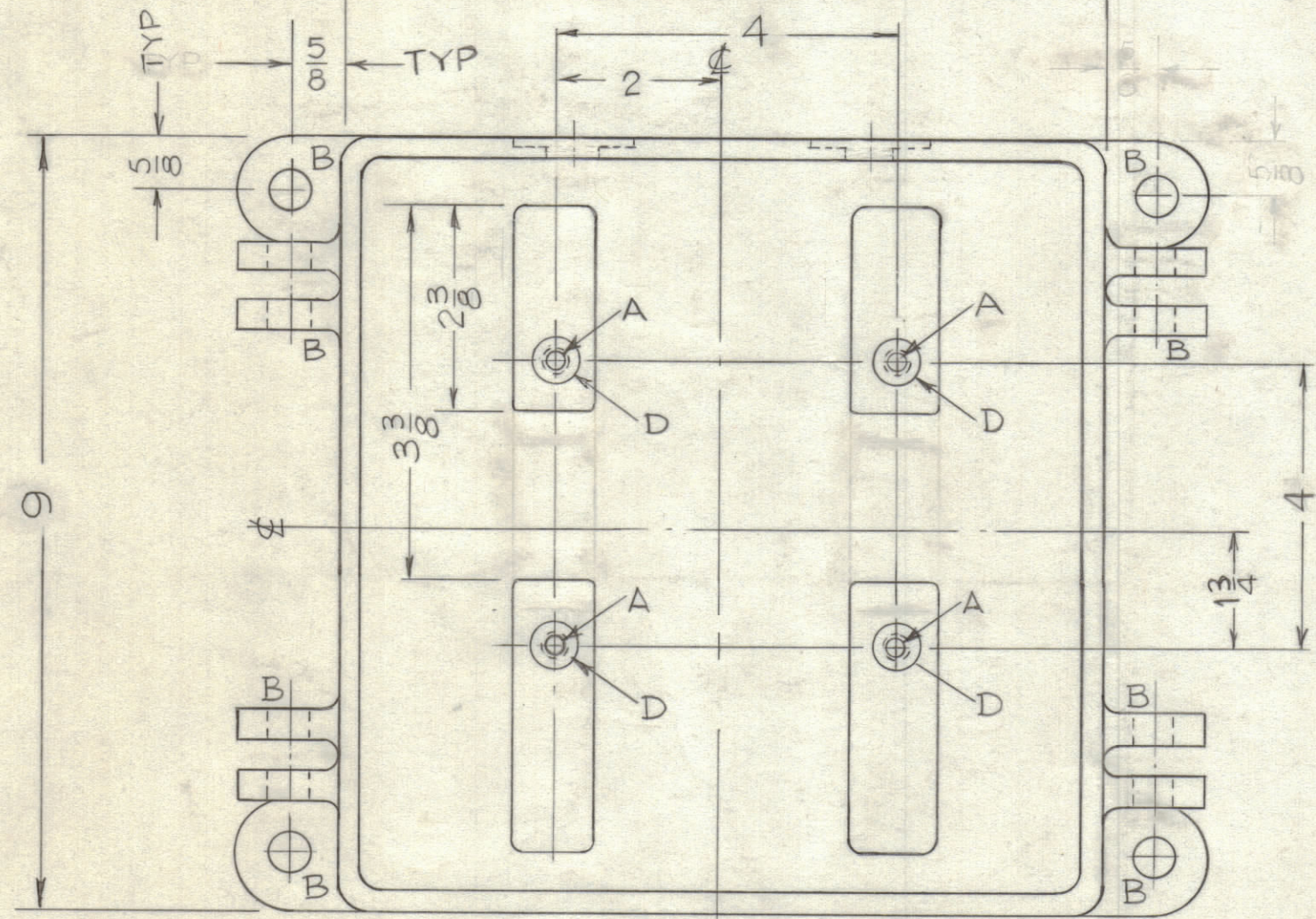
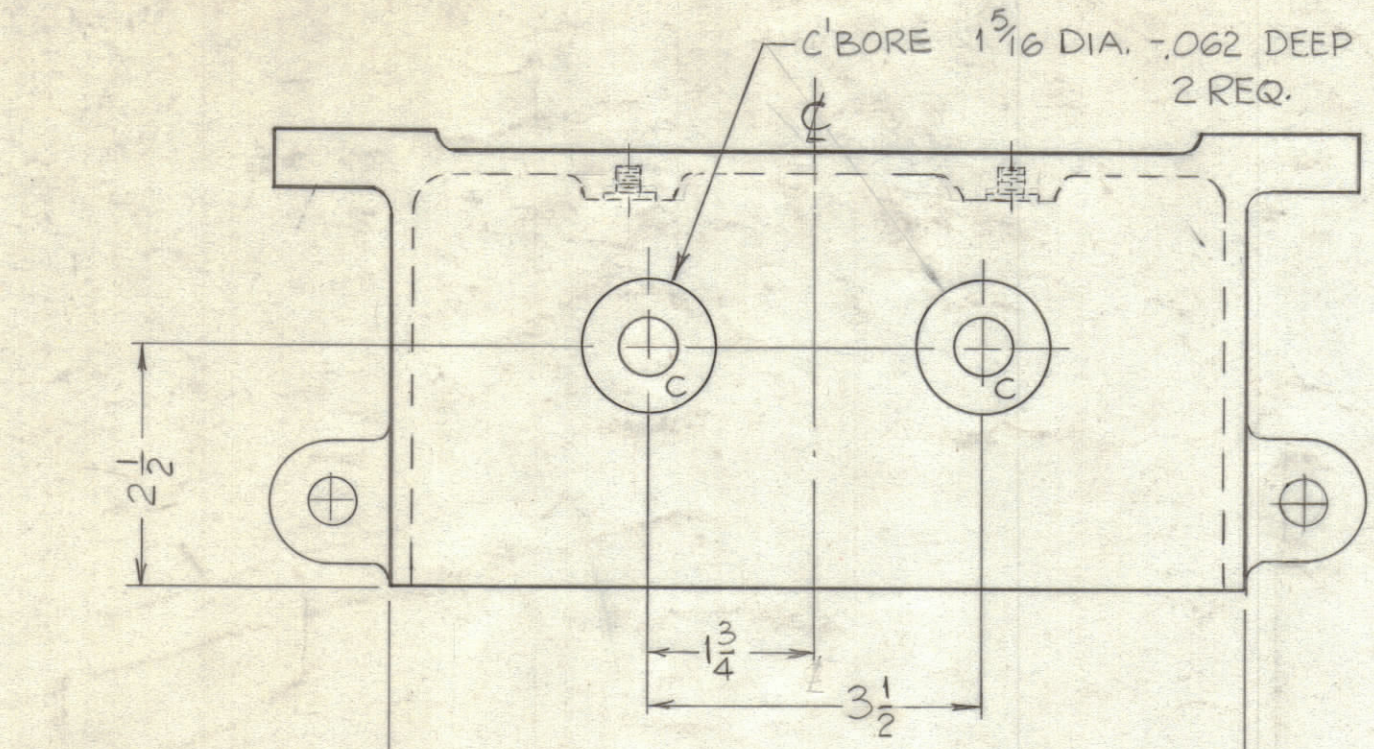


**NOTICE TO PERSONS RECEIVING THIS DRAWING**

THE TECHNICAL MATERIEL CORPORATION claims proprietary right in the material disclosed hereon. This drawing is issued in confidence for engineering information only and may not be reproduced or used to manufacture anything shown hereon without permission from THE TECHNICAL MATERIEL CORPORATION to the user. This drawing is loaned for mutual assistance and is subject to recall at any time.

Property of:  
THE TECHNICAL MATERIEL CORPORATION  
MAMARONECK, NEW YORK

REVISIONS							
ZONE	SYM	DESCRIPTION	DATE	E.M.N. NO.	DRAFT	CHKD	APP
A4	A	RTB-13 WAS RTB-10	8-20-62	7096	SC	file	LB



FINISH:-  
S-404 - YELLOW IRIDITE  
S-114 - ZINC CHROMATE PRIMER  
S-115 - SMOOTH GREY ENAMEL } ALL SURFACES

REF:- CS-108

LETTER	DESCRIPTION	REQ
A	8-32 BLIND TAP, 3/8 DEEP	4
B	33/64 DIA.	12
C	5/8 DIA.	2
D	1/2 DIA. C'BORE SLIGHTLY TO REMOVE PAINT.	4

1 RTB-13		
Q'TY./UNIT	MODEL USED ON	ASS'Y. NO.
SCALE	CODE	

THE CONTENTS OF THIS DRAWING ARE THE EXCLUSIVE PROPERTY OF THE TECHNICAL MATERIEL CORP. ITS UNAUTHORIZED USE OR REPRODUCTION IN WHOLE OR IN PART IS STRICTLY FORBIDDEN.

REQ'D.	ITEM	PART NUMBER	DESCRIPTION	SYMBOL
1 JOHNSON LIST OF MATERIAL				
MATERIAL		THE TECHNICAL MATERIEL CORP. MAMARONECK, NEW YORK		
CAST ALUMINUM		TITLE CASE, MACHINING MODEL - RTB-13		
FINISH		SEE NOTE		
UNLESS OTHERWISE SPECIFIED DIMENSIONS ARE IN INCHES AND INCLUDE CHEMICALLY APPLIED OR PLATED FINISHES		DRAWN V.R.R. DATE 7-27-62		
DECIMALS .X ± .05 .XX ± .01 .XXX ± .005		CHECKED DATE 7/31/62		
FRACTIONS TOLERANCES ± 1/64 ANGLES ± 0° 30'		ELECT. DES. DATE 7-31-62		
		MECH. DES. DATE 7-31-62		
SHEET				REV. LTR.