

THE CONTENTS OF THIS DRAWING ARE THE EXCLUSIVE PROPERTY OF THE TECHNICAL MATERIEL CORP. ITS UNAUTHORIZED USE OR REPRODUCTION IN WHOLE OR IN PART IS STRICTLY FORBIDDEN.

REQ. PER UNIT
1

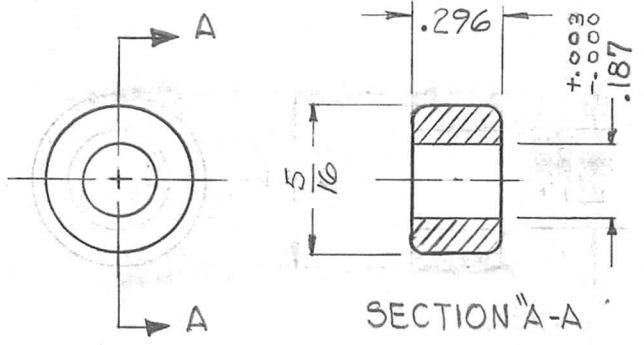
MODEL
HFR-1

USED ON
ASS'Y. NO.

DATE
7-26-62

PM-796

A



REQ.	ITEM	PART NO.	DESCRIPTION			SYMBOL
		KRUY	THE TECHNICAL MATERIEL CORP. MAMARONECK, NEW YORK			
		STOCK SIZE	BUSHING, SHAFT MTG			
A	.296 WAS .234 5/16 WAS 3/8	STEEL, STAINLESS				
		MATERIAL				
SYM	DESCRIPTION	DATE	CH. NO.	DRAFTS	CHECKER	ENG. APP.
	UNLESS OTHERWISE SPECIFIED: DIMENSIONS ARE IN INCHES TOLERANCES ON FRAC. ± 1/64 DEC. ± .005 ANGLES ± 1/2°	SCALE: <i>1:1</i>				
		#303				
		TYPE & TEMPER	HEAT TREAT. SPEC.	DRAWN	CHECKED	FINAL APPROVAL
		3104 PASSIVATE				
		FINISH & SPEC. NO.	ELEC. DES. APP.	MECH. DES. APP.		
					PM-796	A