

THE CONTENTS OF THIS DRAWING ARE THE EXCLUSIVE PROPERTY OF THE TECHNICAL MATERIEL CORP. ITS UNAUTHORIZED USE OR REPRODUCTION IN WHOLE OR IN PART IS STRICTLY FORBIDDEN.

REQ. PER UNIT

1

MODEL
HFR-1

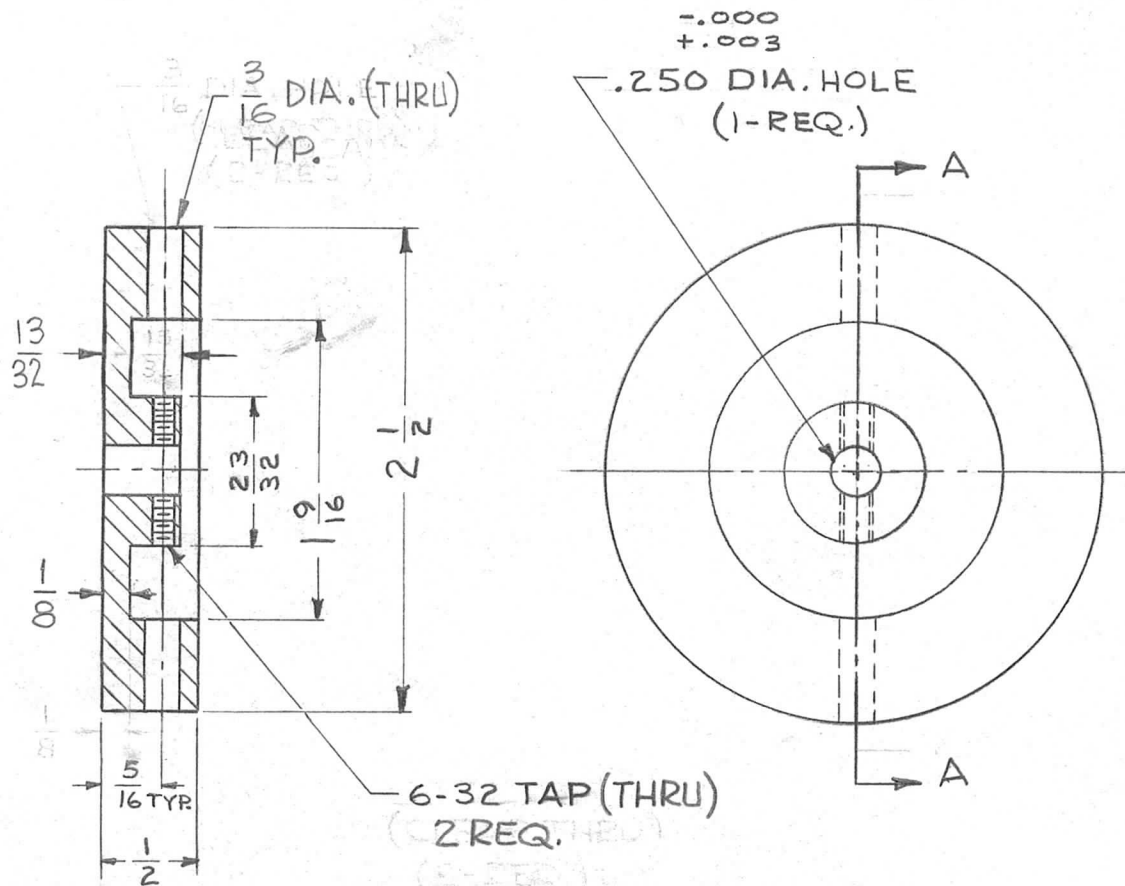
USED ON

ASSY. NO.

DATE

7-26-62

PM-794



CASTING MUST BE FREE OF
PRECISY, HAD HOLES, AND ALL
SURFACES SMOOTH.

REQ.	ITEM	PART NO.	DESCRIPTION	SYMBOL
		KRUY		
			THE TECHNICAL MATERIEL CORP. MAMARONECK, NEW YORK	
STOCK SIZE				
BRASS			CAWHEEL, INERTIA WHEEL	
MATERIAL				
1/2 HARD			G.S. 5-25-62	HQ
TYPE & TEMPER			DRAWN	CHECKED
HEATTREAT. SPEC.				FINAL APPROVAL
FINISH & SPEC. NO.				TRK
			ELEC. DES. APP.	MECH. DES. APP.
				PM-794

UNLESS OTHERWISE SPECIFIED:
DIMENSIONS ARE IN INCHES
TOLERANCES ON
FRAC. ± 1/64 DEC. ± .005 ANGLES ± 1/2°

SCALE: #

MAXIMUM ALLOWABLE TOLERANCES HAVE BEEN DETERMINED AND ANY DEVIATIONS WILL BE CAUSE FOR REJECTION.
REMOVE ALL BURRS AND SHARP EDGES