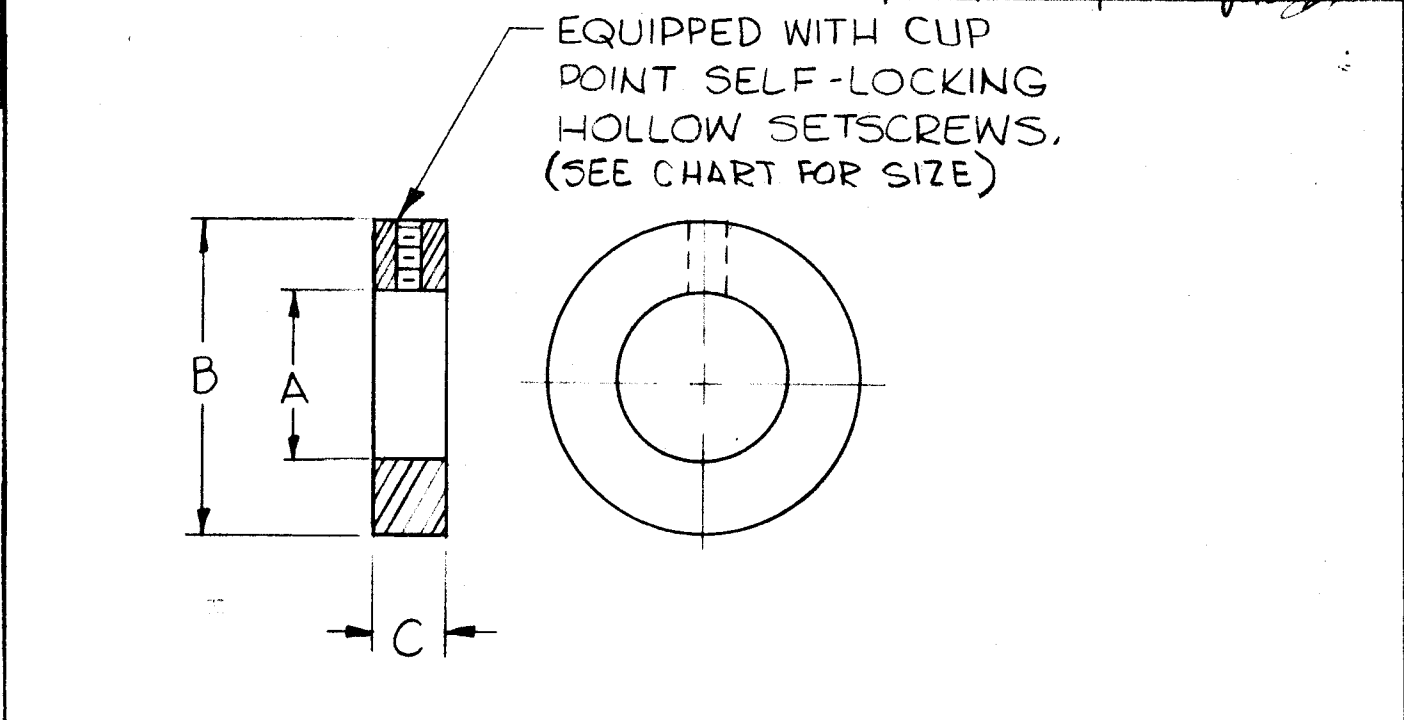


STANDARD DRAWING

TMC PART NUMBER	MFR. PART NUMBER	HOLE DIAMETER A	OUTSIDE DIAMETER B	WIDTH C	SIZE OF SETSCREW	COLLAR AND SETSCREW (SEE MATERIAL AND FINISH CHART)
PM-786-1	SC12	1/8"	3/8"	1/4"	#6 X 1/8"	A
PM-786-2	SC18	3/16	7/16	1/4	#8 X 1/8	B
PM-786-3	SC25	1/4	1/2	9/32	#10 X 1/8	B
PM-786-4	SC31	5/16	5/8	11/32	#10 X 3/16	A
PM-786-5	SC37	3/8	3/4	3/8	1/4 X 3/16	A
PM-786-6	SC43	7/16	7/8	7/16	1/4 X 1/4	A
PM-786-7	SC50	1/2	1	7/16	1/4 X 1/4	A
PM-786-8	SC56	9/16	1	7/16	1/4 X 1/4	A
PM-786-9	SC62	5/8	1-1/8	1/2	5/16X 1/4	A
PM-786-10	SC68	11/16	1-1/4	9/16	5/16X 1/4	A
PM-786-11	SC75	3/4	1-1/4	9/16	5/16X 1/4	A
PM-786-12	SC81	13/16	1-5/16	9/16	5/16X 1/4	A
PM-786-13	SC87	7/8	1-1/2	9/16	5/16X 5/16	A
PM-786-14	SC93	15/16	1-5/8	9/16	5/16X 5/16	A
PM-786-15	SC100	1	1-5/8	5/8	5/16X 5/16	A
PM-786-16	SC106	1-1/16	1-3/4	5/8	5/16X 5/16	A
PM-786-17	SC112	1-1/8	1-3/4	5/8	5/16X 5/16	A
PM-786-18	SC118	1-3/16	2	11/16	3/8 X 3/8	A
PM-786-19	SC125	1-1/4	2	11/16	3/8 X 3/8	A
PM-786-20	SC131	1-5/16	2-1/8	11/16	3/8 X 3/8	A
PM-786-21	SC137	1-3/8	2-1/8	3/4	3/8 X 3/8	A
PM-786-22	SC143	1-7/16	2-1/4	3/4	3/8 X 3/8	A
PM-786-23	SC150	1-1/2	2-1/4	3/4	3/8 X 3/8	A
PM-786-24	SC156	1-9/16	2-1/2	13/16	3/8 X 3/8	A
PM-786-25	SC162	1-5/8	2-1/2	13/16	3/8 X 3/8	A
PM-786-26	SC168	1-11/16	2-1/2	13/16	3/8 X 3/8	A
PM-786-27	SC175	1-3/4	2-3/4	7/8	1/2 X 1/2	A
PM-786-28	SC181	1-13/16	2-3/4	7/8	1/2 X 1/2	A
PM-786-29	SC187	1-7/8	2-3/4	7/8	1/2 X 1/2	A
PM-786-30	SC193	1-15/16	3	7/8	1/2 X 1/2	A
PM-786-31	SC200	2	3	7/8	1/2 X 1/2	A
PM-786-32	SC212	2-1/8	3	7/8	1/2 X 1/2	A
PM-786-33	SC218	2-3/16	3-1/4	15/16	1/2 X 1/2	A
PM-786-34	SC225	2-1/4	3-1/4	15/16	1/2 X 1/2	A
PM-786-35	SC231	2-5/16	3-1/4	15/16	1/2 X 1/2	A
PM-786-36	SC237	2-3/8	3-1/4	15/16	1/2 X 1/2	A
PM-786-37	SC243	2-7/16	3-1/2	1	1/2 X 1/2	A
PM-786-38	SC250	2-1/2	3-1/2	1	1/2 X 1/2	A
PM-786-39	SC256	2-9/16	3-3/4	1-1/8	1/2 X 9/16	A
PM-786-40	SC268	2-11/16	4	1-1/8	1/2 X 5/8	A
PM-786-41	SC275	2-3/4	4	1-1/8	1/2 X 5/8	A
PM-786-42	SC293	2-15/16	4-1/4	1-1/8	1/2 X 5/8	A
PM-786-43	SC300	3	4-1/4	1-1/8	1/2 X 5/8	A
PM-786-44	SPECIAL	.281	1/2	9/32	#10X 1/8	B
PM-786-45	SPECIAL	1/8	1/4	3/16	#4X 1/16	B
PM-786-46	SPECIAL	1/4	1/2	3/16	#6 X 1/8	B
PM-786-47	SPECIAL	3/16	5/16	5/32	#2X 1/16	B

G
PM-786

REVISIONS						
SYM	DESCRIPTION	DATE	E.M.N. NO.	DRAFT	CHKD	APPD
A	MATL WAS STEEL, STAINLESS, 303; FIN. WAS S-104 PASSIVATE COLLAR & SETSCREW ADDED TO B CHART; FIN & MATL CHART ADDED	1-25-63	8089			
B	SET-SCREW WAS KNURLED POINT	5-10-63	8964			
C	PM 786-44 ADDED	4/28/64	11298	A.M.		
D	PM 786-45 ADDED	7-30-64	11995	SRG		
E	PM 786-46 ADDED	8-24-64	12192	KB		
F	CLERICAL CHANGE	3-23-65		S.E.		
G	PM 786-47 ADDED.	4-26-65	13923	S.Z.		



MATERIAL AND FINISH CHART	
CODE	SPECIFICATIONS
A	STEEL, CR, B1113, PLAIN
B	STEEL, STAINLESS, 303, PASSIVATE S-104

REF. BOSTON GEAR

REQ'D.	ITEM	PART NUMBER	DESCRIPTION	SYMBOL
	KRUY			

LIST OF MATERIAL		THE TECHNICAL MATERIEL CORP. MAMARONECK, NEW YORK					
MATERIAL	FINISH	TITLE					
SEE CHART	SEE CHART	COLLAR, SHAFT, MOUNTING					
UNLESS OTHERWISE SPECIFIED DIMENSIONS ARE IN INCHES AND INCLUDE CHEMICALLY APPLIED OR PLATED FINISHES		DRAWN RUZZO	DATE 7-26-62				
DECIMALS .X ± .05 .XX ± .01 .XXX ± .005		CHECKED HWA	DATE 7-26-62				
FRACTIONS ± 1/64 ANGLES ± 0° 30'		ELECT. DES.	DATE				
TOLERANCES		MECH. DES. TJK	DATE 7-26-62				
THE CONTENTS OF THIS DRAWING ARE THE EXCLUSIVE PROPERTY OF THE TECHNICAL MATERIEL CORP. ITS UNAUTHORIZED USE OR REPRODUCTION IN WHOLE OR IN PART IS STRICTLY FORBIDDEN.		<table border="1" style="width: 100%;"> <tr> <td style="font-size: 2em;">PM-786</td> <td style="font-size: 2em;">G</td> </tr> <tr> <td>SHEET</td> <td>REV. LTR.</td> </tr> </table>		PM-786	G	SHEET	REV. LTR.
PM-786	G						
SHEET	REV. LTR.						

NOTES