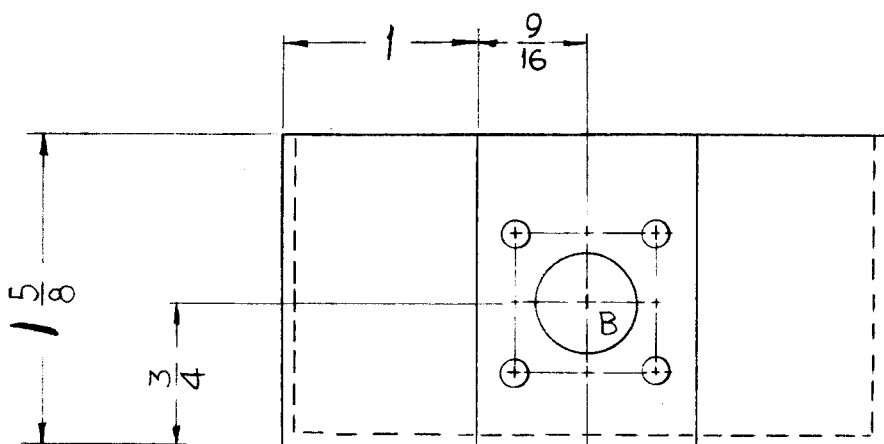


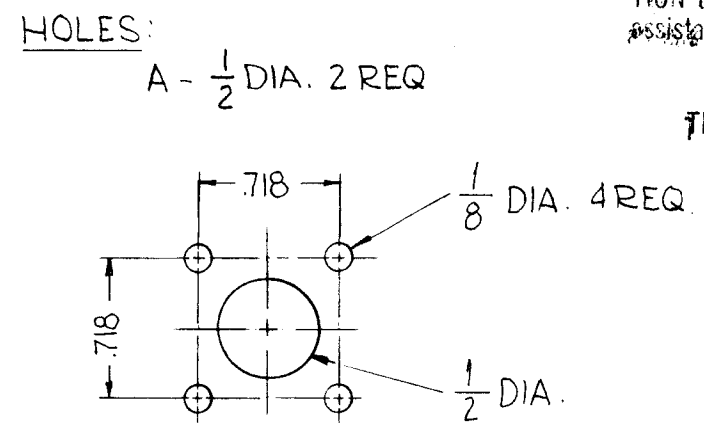
PM-771



REVISIONS						
SYM	DESCRIPTION	DATE	E.M.N. NO.	DRAFT	CHKD	APPD
Ø	ORIGINAL RELEASE FOR PRODUCTION	5/25/62				

NOT TO PERSONS RECEIVING THIS DRAWING

THE TECHNICAL MATERIEL CORPORATION claims proprietary right in the material disclosed herein. This drawing is issued in confidence for engineering information only and may not be reproduced or used to manufacture anything shown hereon without permission from THE TECHNICAL MATERIEL CORPORATION to the user. This drawing is loaned for manufacturing assistance and is subject to recall at any time.



Property of:
THE TECHNICAL MATERIEL CORPORATION
 MAMARONECK, NEW YORK

B-DETAIL
 (1 REQ)

- NOTES:
- MATERIAL LAY-UP-10PLIES OF PRE-IMPREGUATED MATERIAL.
 - AFTER PLYS ARE LAID UP, THE MOLD IS SEALED IN A BAG OF POLYVINYL ALCOHOL.
 - A VACUM IS APPLIED AND THE UNIT IS CURED IN AN OVEN AT 135°C FOR 1 1/2 HOURS.
 - MOLD DIMENSIONS: 2 1/2 THICKNESS OF LAMINATED PLYWOOD.

1	DAC-15	
Q'TY./UNIT	MODEL USED ON	ASS'Y. NO.
SCALE	CODE	

THE CONTENTS OF THIS DRAWING ARE THE EXCLUSIVE PROPERTY OF THE TECHNICAL MATERIEL CORP. ITS UNAUTHORIZED USE OR REPRODUCTION IN WHOLE OR IN PART IS STRICTLY FORBIDDEN.

REQ'D.	ITEM	PART NUMBER	DESCRIPTION	SYMBOL
R. LANGER LIST OF MATERIAL				
MATERIAL POLYESTER 181-136 GLASS CLOTH			THE TECHNICAL MATERIEL CORP. MAMARONECK, NEW YORK	
FINISH S-115 SMOOTH GREY ENAMEL			TITLE CASE, DIPOLE ANTENNA COUPLER (SMALL SIZE)	
UNLESS OTHERWISE SPECIFIED DIMENSIONS ARE IN INCHES AND INCLUDE CHEMICALLY APPLIED OR PLATED FINISHES		DRAWN G. B. Filippo	DATE 5-22-62	FINAL APPROVAL SJM
		CHECKED R. Langer	DATE 5-24-62	DATE 8/12/69
		EL. DES. R. Langer	DATE 5-25/62	Ø
		MECH. DES. R. Langer	DATE 5-25/62	PM-771
			SHEET	REV. LTR.