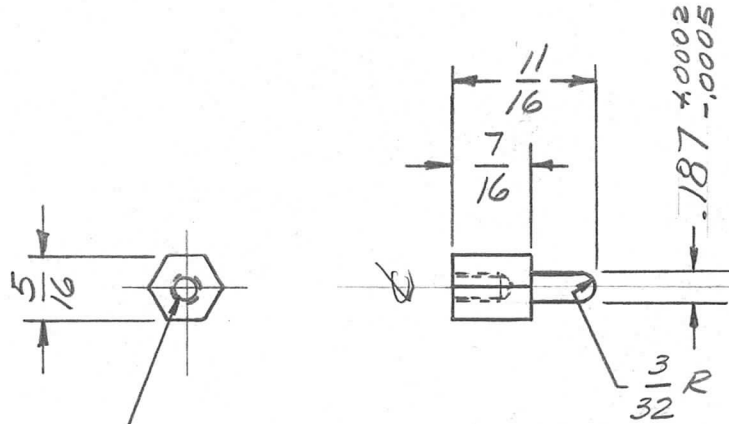


THE CONTENTS OF THIS DRAWING ARE THE EXCLUSIVE PROPERTY OF THE TECHNICAL MATERIEL CORP. ITS UNAUTHORIZED USE OR REPRODUCTION IN WHOLE OR IN PART IS STRICTLY FORBIDDEN.

REQ. PER UNIT	USED ON		
	MODEL	ASS'Y. NO.	DATE
2	HFR-1/T	A-3042	2-15-62

PM-757



DRILL & TAP
FOR #8-32 SCREW
1/4" DEEP

REQ.	ITEM	PART NO.	DESCRIPTION			SYMBOL
			J. ANGER	THE TECHNICAL MATERIEL CORP.		
		5/16 HEX ROD	MAMARONECK, NEW YORK			
		STOCK SIZE	STUD, HEX			
		STAINLESS STEEL				
		MATERIAL				
SYM	DESCRIPTION	DATE	CH. NO.	DRAFTS	CHECKER	ENG. APP.
	UNLESS OTHERWISE SPECIFIED: DIMENSIONS ARE IN INCHES TOLERANCES ON FRAC. ± 1/64 DEC. ± .005 ANGLES ± 1/2°					
	SCALE:					
	MAXIMUM ALLOWABLE TOLERANCES HAVE BEEN DETERMINED AND ANY DEVIATIONS WILL BE CAUSE FOR REJECTION. REMOVE ALL BURRS AND SHARP EDGES					
		#303	OB	AB		BP
	TYPE & TEMPER	HEATTREAT. SPEC.	DRAWN	CHECKED	FINAL APPROVAL	
	PASSIVATE		J. ANGER		PM-757	
	FINISH & SPEC. NO.		ELEC. DES. APP.	MECH. DES. APP.		