

THE CONTENTS OF THIS DRAWING ARE THE EXCLUSIVE PROPERTY OF THE TECHNICAL MATERIEL CORP. ITS UNAUTHORIZED USE OR REPRODUCTION IN WHOLE OR IN PART IS STRICTLY FORBIDDEN.

REQ. PER UNIT

USED ON

MODEL

ASS'Y. NO.

DATE

HR-11T

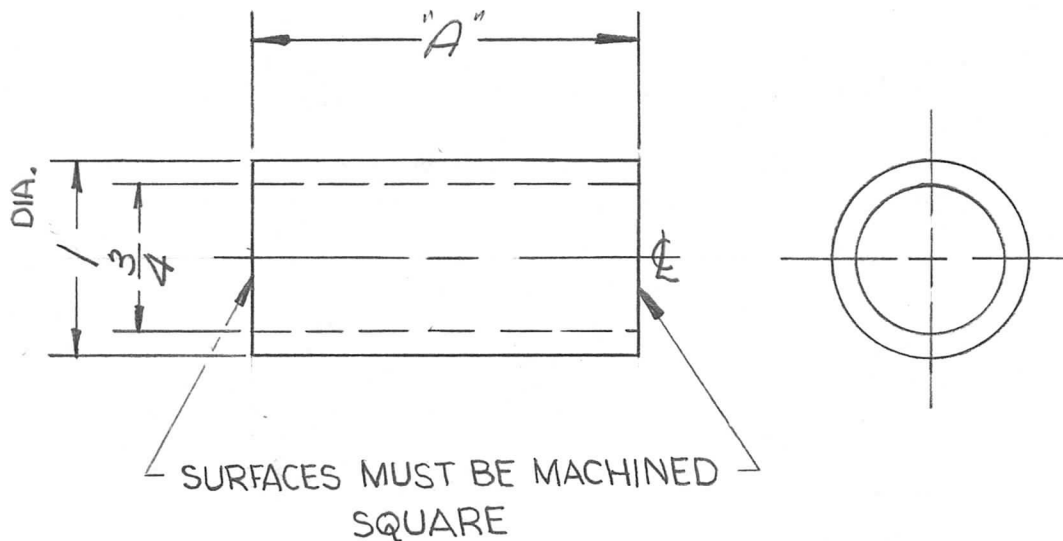
A3042

2-15-62

PM-749

A

TMC PART NO.	"A" DIMEN.	REQ'D. PER UNIT
PM-749-1	0.468	1
PM-749-2	2.000	2



REQ.	ITEM	PART NO.	DESCRIPTION			SYMBOL
		1" DIA.	THE TECHNICAL MATERIEL CORP.			
		STOCK SIZE	MAMARONECK, NEW YORK			
A	CLARIFIED DIMS. IN CHART	MELAMINE	SPACER, SLEEVE			
		MATERIAL				
SYM	DESCRIPTION	DATE	CH. NO.	DRAFTS	CHECKER	ENG. APP.
	UNLESS OTHERWISE SPECIFIED:					
	DIMENSIONS ARE IN INCHES	SCALE:				
	TOLERANCES ON	MAXIMUM ALLOWABLE TOLERANCES HAVE BEEN DETERMINED AND ANY DEVIATIONS WILL BE CAUSE FOR REJECTION.				
	FRAC. ± 1/64 DEC. ± .005 ANGLES ± 1/2°	REMOVE ALL BURRS AND SHARP EDGES				
		G5				
		NATURAL				
		FINISH & SPEC. NO.				
			DRAWN	CHECKED	FINAL APPROVAL	
			J. ANGER		BP	
			ELEC. DES. APP.	MECH. DES. APP.	PM-749 A	