

THE CONTENTS OF THIS DRAWING ARE THE EXCLUSIVE PROPERTY OF THE TECHNICAL MATERIEL CORP. ITS UNAUTHORIZED USE OR REPRODUCTION IN WHOLE OR IN PART IS STRICTLY FORBIDDEN.

REQ. PER UNIT
2

MODEL
TER-5K-50

USED ON

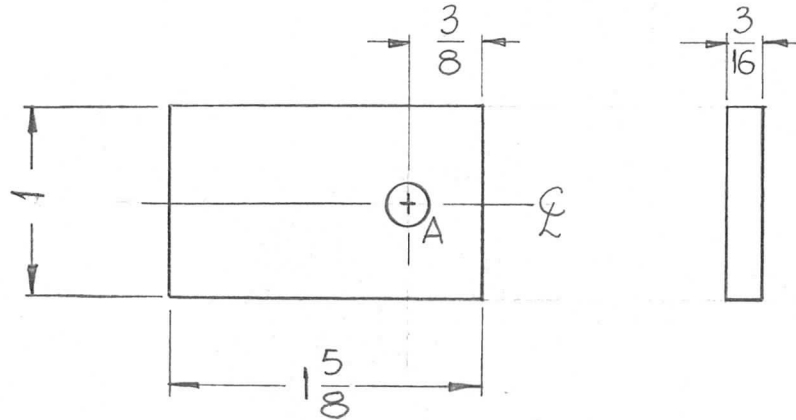
ASS'Y. NO.

DATE

1-30-62

PM-742

SYMBOL	DESCRIPTION	REQ.
A	13/64 DIA.	1



REQ.	ITEM	PART NO.	DESCRIPTION	SYMBOL					
		3/16 THK. X 1" WIDE	THE TECHNICAL MATERIEL CORP. MAMARONECK, NEW YORK						
		STOCK SIZE							
		BRASS	CENTERED PLATE, STRAP						
		MATERIAL							
SYM	DESCRIPTION	DATE	CH. NO.	DRAFTS	CHECKER	ENG. APP.			
UNLESS OTHERWISE SPECIFIED:		SCALE: Do Not Scale		DRAWN		CHECKED		FINAL APPROVAL	
DIMENSIONS ARE IN INCHES		MAXIMUM ALLOWABLE TOLERANCES HAVE BEEN DETERMINED AND ANY DEVIATIONS WILL BE CAUSE FOR REJECTION.		D. J. Mammone		RUZZO		SAM	
TOLERANCES ON		REMOVE ALL BURRS AND SHARP EDGES		NATURAL		ELEC. DES. APP.		MECH. DES. APP.	
FRAC. ± 1/64 DEC. ± .005 ANGLES ± 1/2°				FINISH & SPEC. NO.		ELEC. DES. APP.		MECH. DES. APP.	
								PM-742	