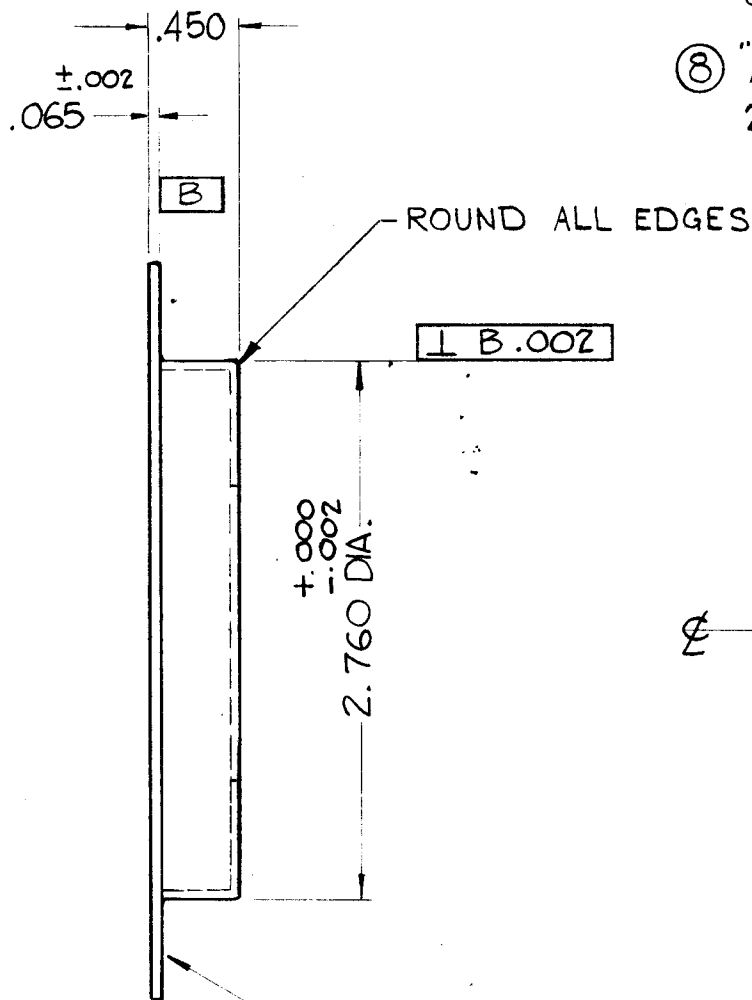
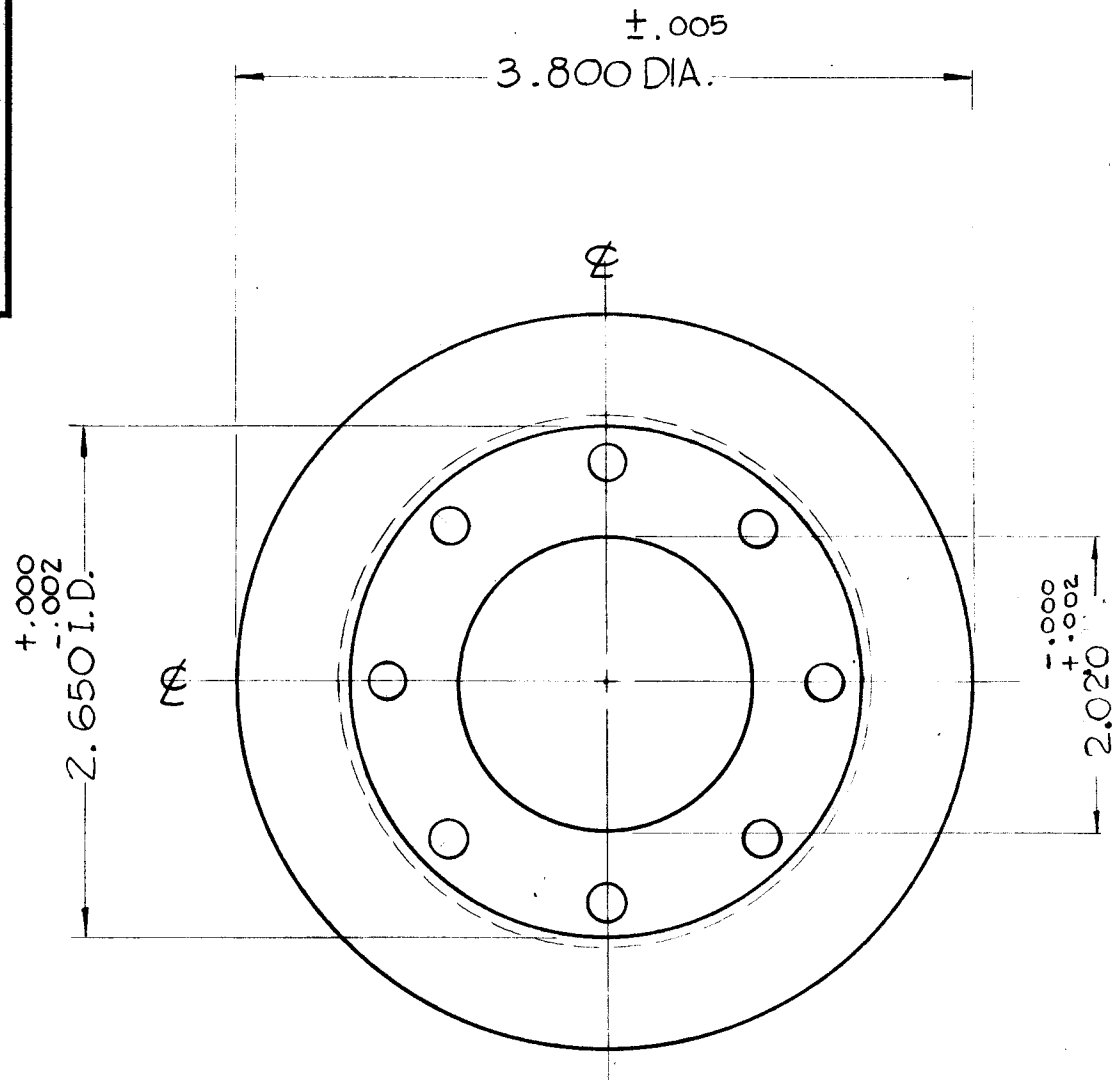


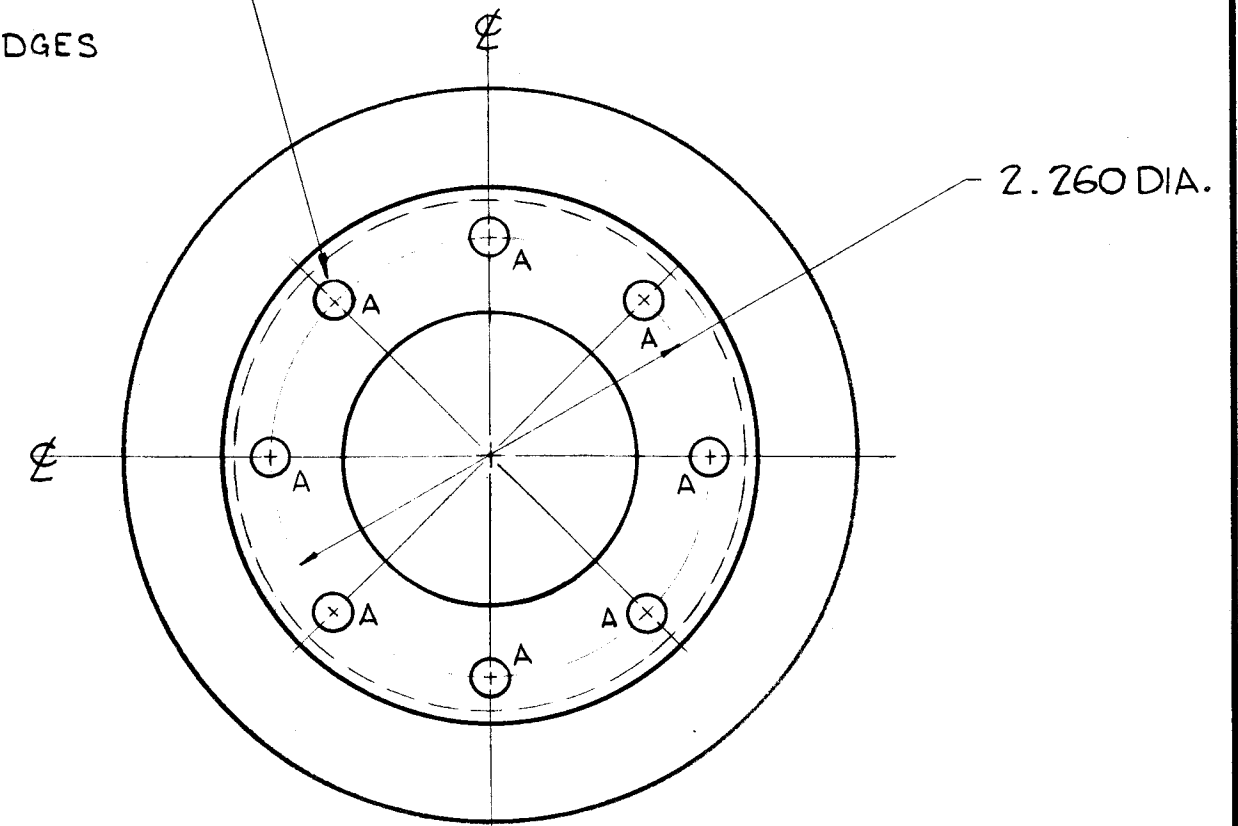
PM-698 B



HOLES —

A - $\frac{11}{64}$ DIA. — 8 REQ.

⑧ "A" HOLES EQUALLY SPACED 45° APART ON A 2.260 DIA. AS SHOWN.



CLASS 16 FINISH (POLISHED).

NOTE - ALL DIMENSIONS APPLY AFTER PLATING.

FINISHING NOTES

S-245 SILVER PLATE, BRIGHT
S-423 IRIDITE, 18P SILVER-KOTE.

SYM	DESCRIPTION	DATE	CH. NO.	DRAFTS	CHECKER	ENG. APP.
B	2.020 $\pm .002$ WAS 2.070 $\pm .002$	2-2-62	6298	W/L	DM	DM
A	2.070 $\pm .002$ WAS 1.812 DIA.	11-21-61	5953	C.A.	DM	DM

UNLESS OTHERWISE SPECIFIED:
DIMENSIONS ARE IN INCHES
TOLERANCES ON FRACTIONS \pm DECIMALS $\pm .005$ ANGLES \pm

SCALE: — DO NOT SCALE —
MAXIMUM ALLOWABLE TOLERANCES HAVE BEEN DETERMINED AND ANY DEVIATIONS WILL BE CAUSE FOR REJECTION.
REMOVE ALL BURRS AND SHARP EDGES

1	GPT-40K	AX-268	6-21-61
REQ. PER UNIT	MODEL	SECTION	ASS'Y. NO.
USED ON			

REQ. ITEM	PART NO.	DESCRIPTION	SYMBOL
.065		THE TECHNICAL MATERIEL CORP. MAMARONECK, NEW YORK	
STOCK SIZE			
BRASS		PRESSURE CUP, TOP	
MATERIAL		BANDSWITCH	
HALF HARD		John C. Biele	W.A.F. LB/FE
TYPE & TEMPER	HEAT TREAT. SPEC.	DRAWN	CHECKER
SEE NOTE			
FINISH & SPEC. NO.		ELEC. DES. APP.	MECH. DES. APP.
			PM-698 B