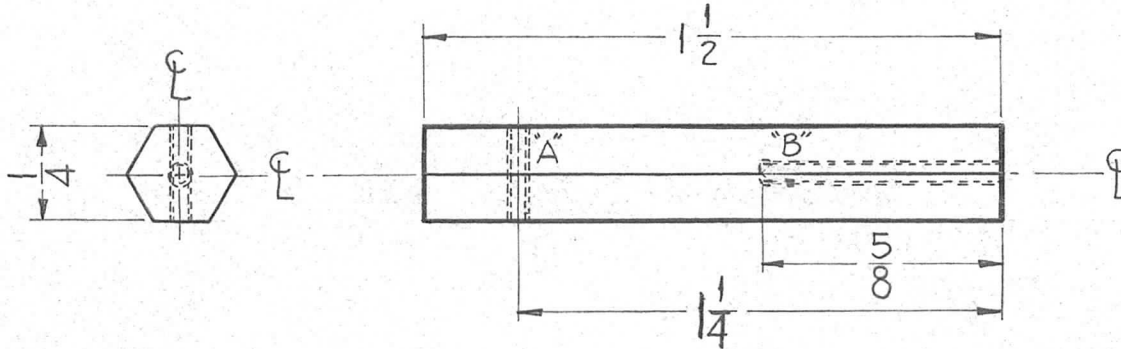


REQ. PER. UNIT	USED ON			PM-693
	MODEL	ASS'Y. NO.	DATE	
Z	CHG-2	OVEN	3-14-61	



HOLE'S
 "A" ~ DR. & TAP For 4-40 1
 "B" ~ DR. & TAP For 6-32 1

								REQ. ITEM	PART NO.	DESCRIPTION			SYMBOL	
								1/4" HEX. ROD		THE TECHNICAL MATERIEL CORP.				
								STOCK SIZE		MAMARONECK, NEW YORK				
								ALUMINUM		SWITCH MOUNTING STANDOFF				
								MATERIAL						
ISSUE	ITEM	CHANGED FROM	DATE	CH. NO.	DRAFTS	CHECKER	ENG. APP.	5052-H32	— # —	<i>D.J. Mann</i>	<i>H.O.</i>	<i>[Signature]</i>		
TOLERANCES			SCALE: Do Not SCALE					TYPE & TEMPER		HEAT TREAT. SPEC.	DRAWN	CHECKED	FINAL APPROVAL	
DEC. DIM. ± .015			MAXIMUM ALLOWABLE TOLERANCES HAVE BEEN DETERMINED AND ANY DEVIATIONS WILL BE CAUSE FOR REJECTION. REMOVE ALL BURRS AND SHARP EDGES					5404 YELLOW IRIDITE						
FRAC. DIM. ± 1/64								FINISH & SPEC. NO.		ELEC. DES. APP	MECH. DES. APP			
ANGULAR DIM. ±											PM-693			