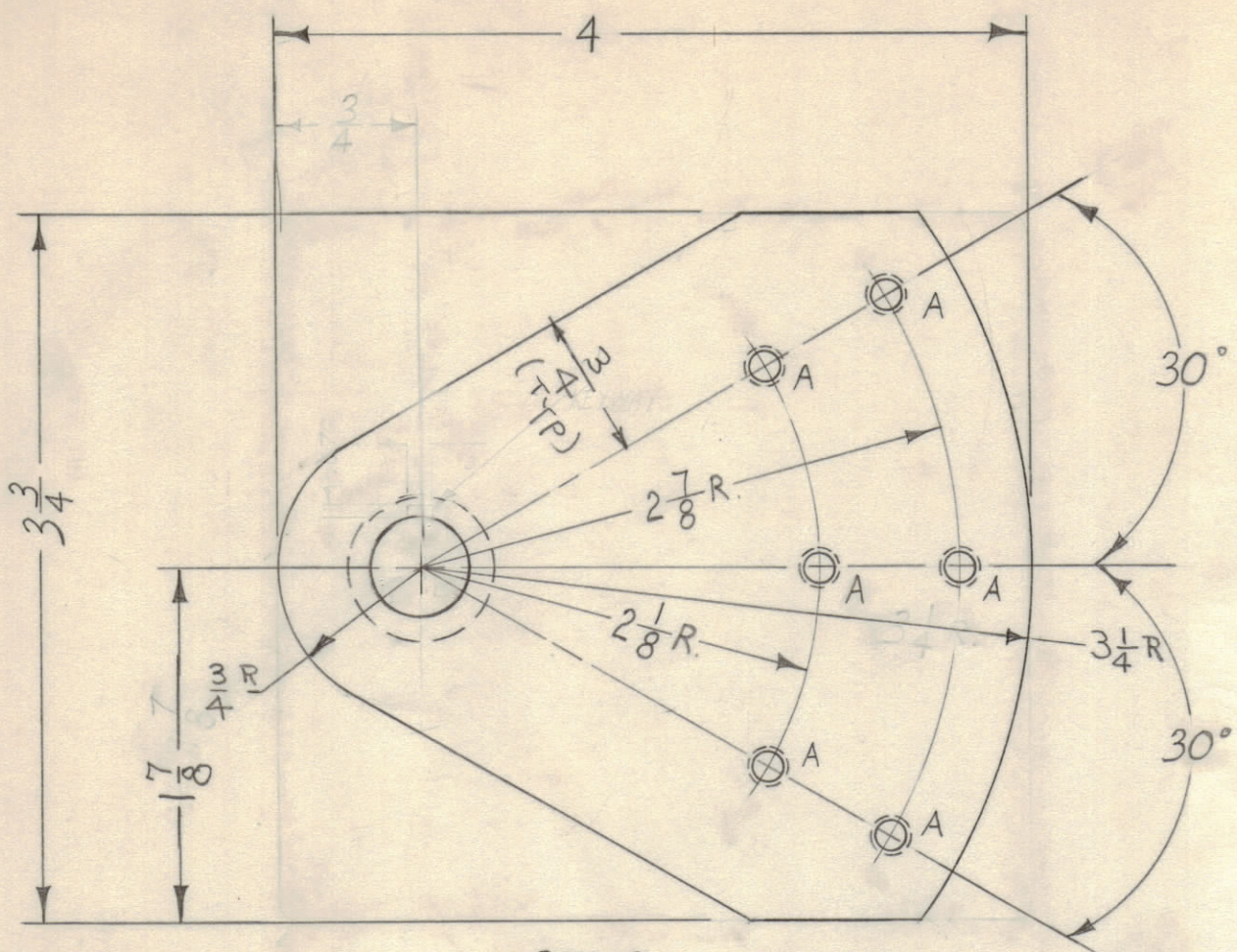
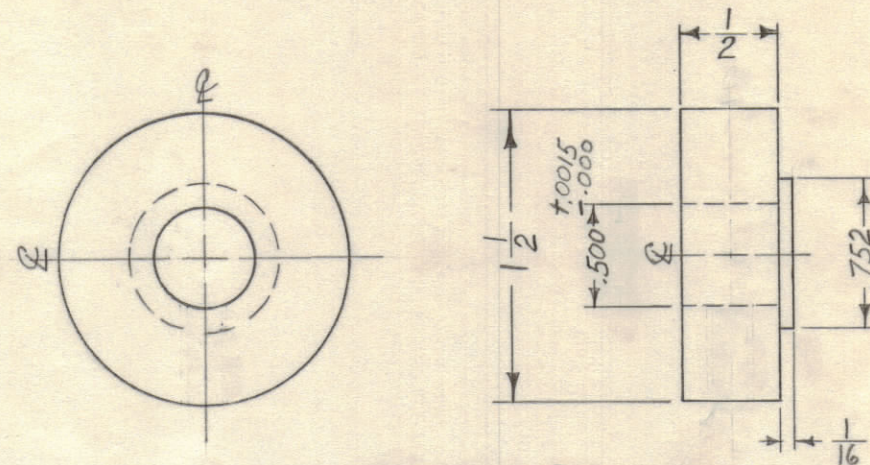
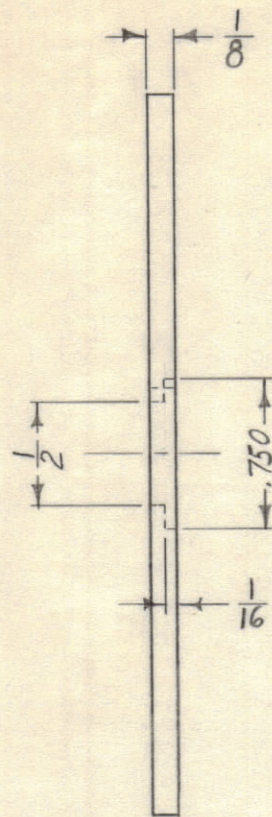


A-DR. & TAP FOR 8-32 6 REQ.



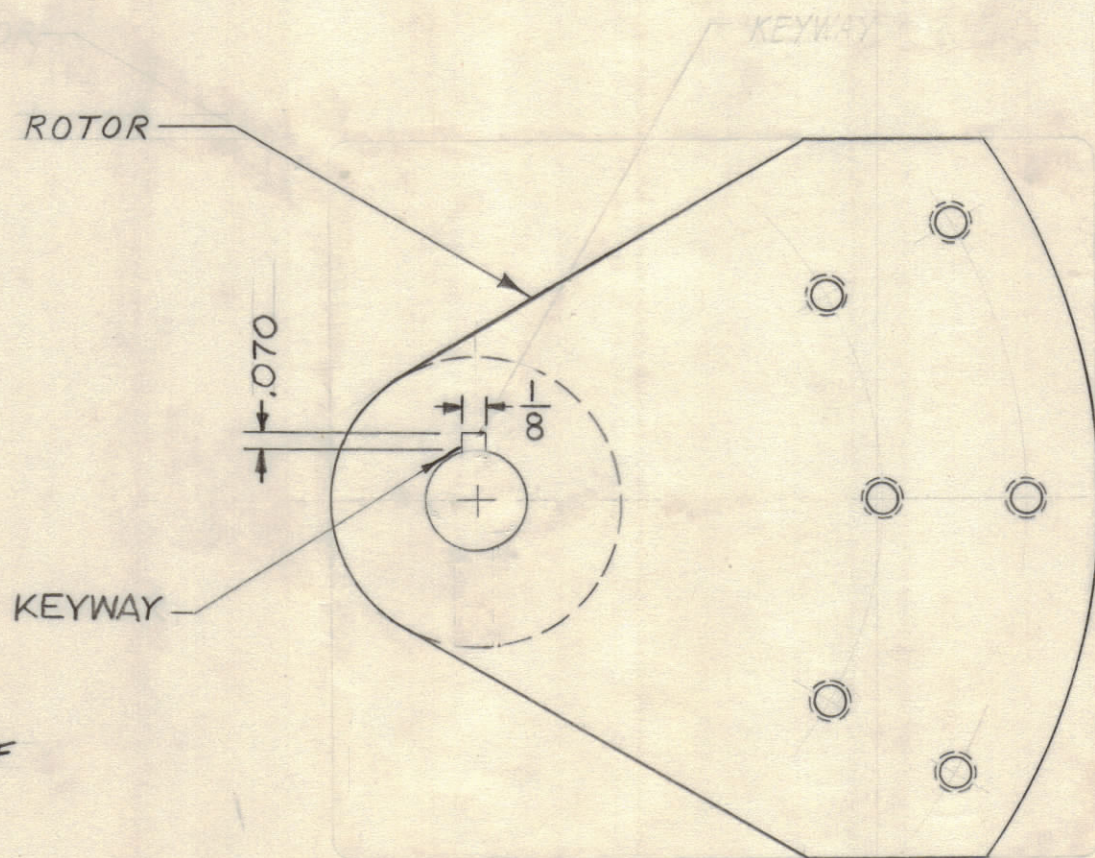
ROTOR
MATERIAL - BRASS - 1/2 HARD - 1/8 THICK.



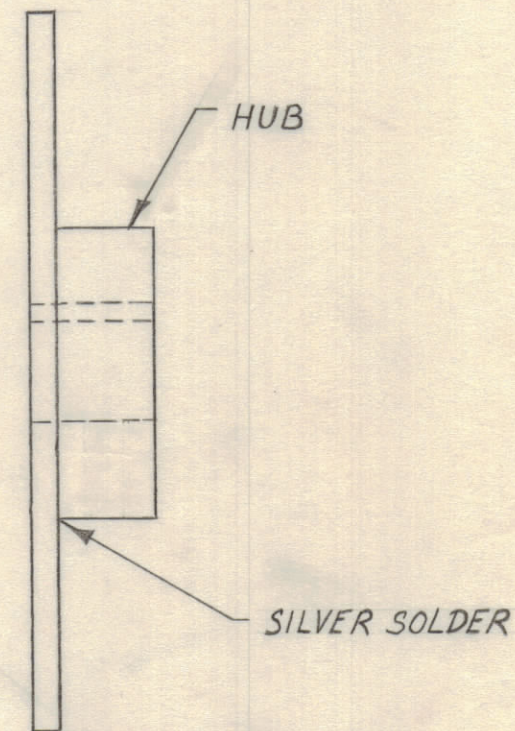
HUB
MATERIAL - BRASS - FREE TURNING

NOTICE TO PERSONS RECEIVING THIS DRAWING
THE TECHNICAL MATERIEL CORPORATION claims proprietary right in the material disclosed hereon. This drawing is issued in confidence for engineering information only and may not be reproduced or used to manufacture anything shown hereon without permission from THE TECHNICAL MATERIEL CORPORATION to the user. This drawing is loaned for mutual assistance and is subject to recall at any time.

Property of:
THE TECHNICAL MATERIEL CORPORATION
MAMARONECK, NEW YORK



NOTE:
KEYWAY TO BE MILLED AFTER ASS'Y OF ROTOR & HUB.



ASSEMBLY - ROTOR & HUB
FINISH - S245 - SILVER PLATED (.0003 THICK)
S423 - CLEAR IRIDITE.

ISSUE	ZONE	DESCRIPTION	DATE	CH. NO.	DRAFTS	CHECKER	ENG. APP.
A	B4	S245, S423 Added to Ass'y of Rotor + Hub	5-3-61	4824	J.C.B.	[Signature]	[Signature]

TOLERANCES: DEC. DIM. ± 1/64, FRAC. DIM. ± 1/64, ANGULAR DIM. ±

SCALE: FULL

MAXIMUM ALLOWABLE TOLERANCES HAVE BEEN DETERMINED AND ANY DEVIATIONS WILL BE CAUSE FOR REJECTION. REMOVE ALL BURRS AND SHARP EDGES

REQ PER UNIT	MODEL	SECTION	ASS'Y. NO.	DATE
1	ACU			9-23-60

REQ. ITEM	PART NO.	DESCRIPTION	SYMBOL
SEE DETAILS		THE TECHNICAL MATERIEL CORP. MAMARONECK, NEW YORK	
SEE DETAILS		ROTOR, UNBAL BAND SWITCH	
SEE DETAILS			
		DRAWN: [Signature]	ELEC. DES. APP. [Signature]
		CHECKED: [Signature]	MECH. DES. APP. [Signature]
		HEAT TREAT. SPEC.	FINAL APPROVAL
		SEE ASSEMBLY	
		FINISH & SPEC. NO.	

PM-666 A