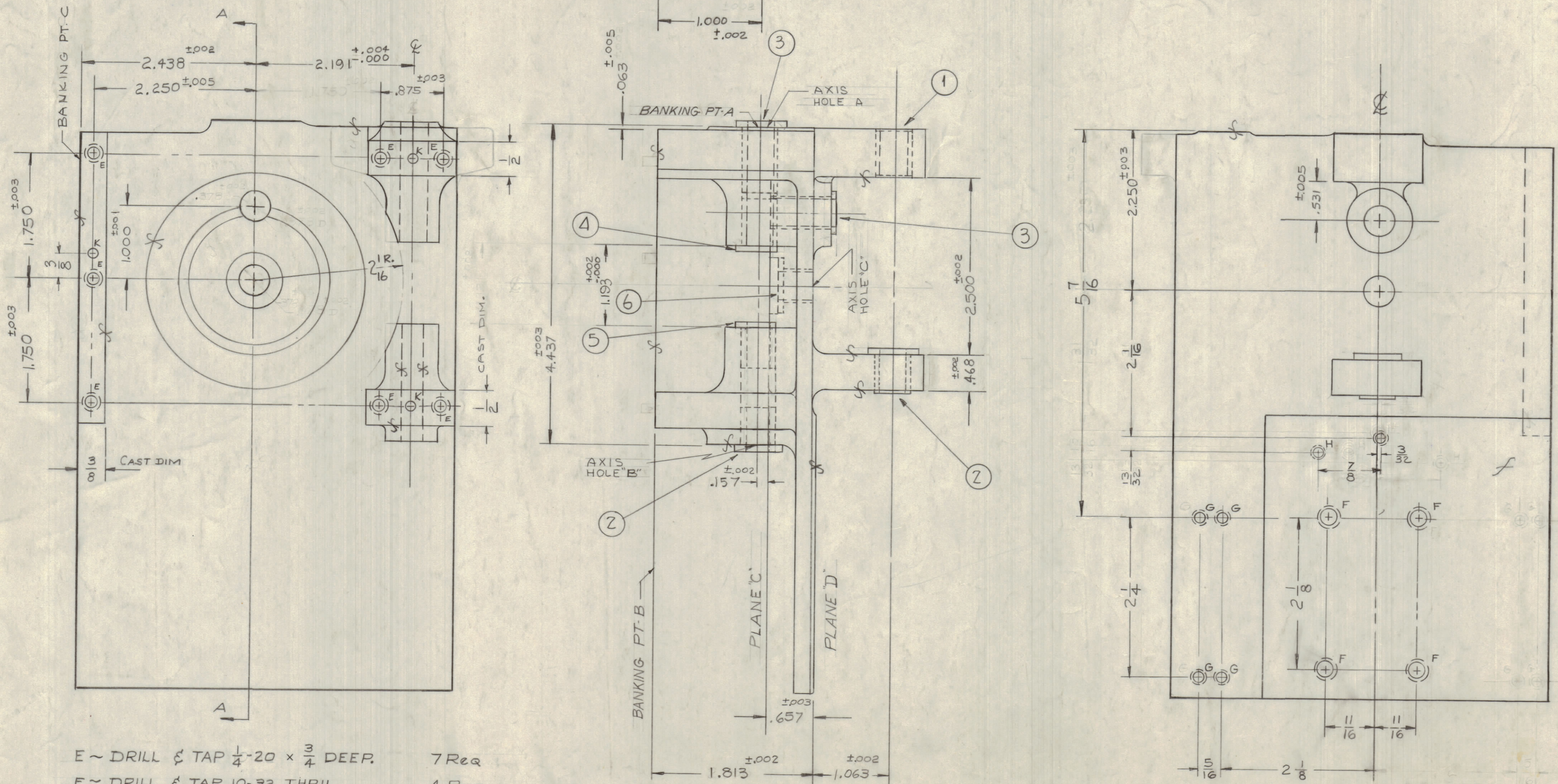


NOTICE TO PERSONS RECEIVING THIS DRAWING

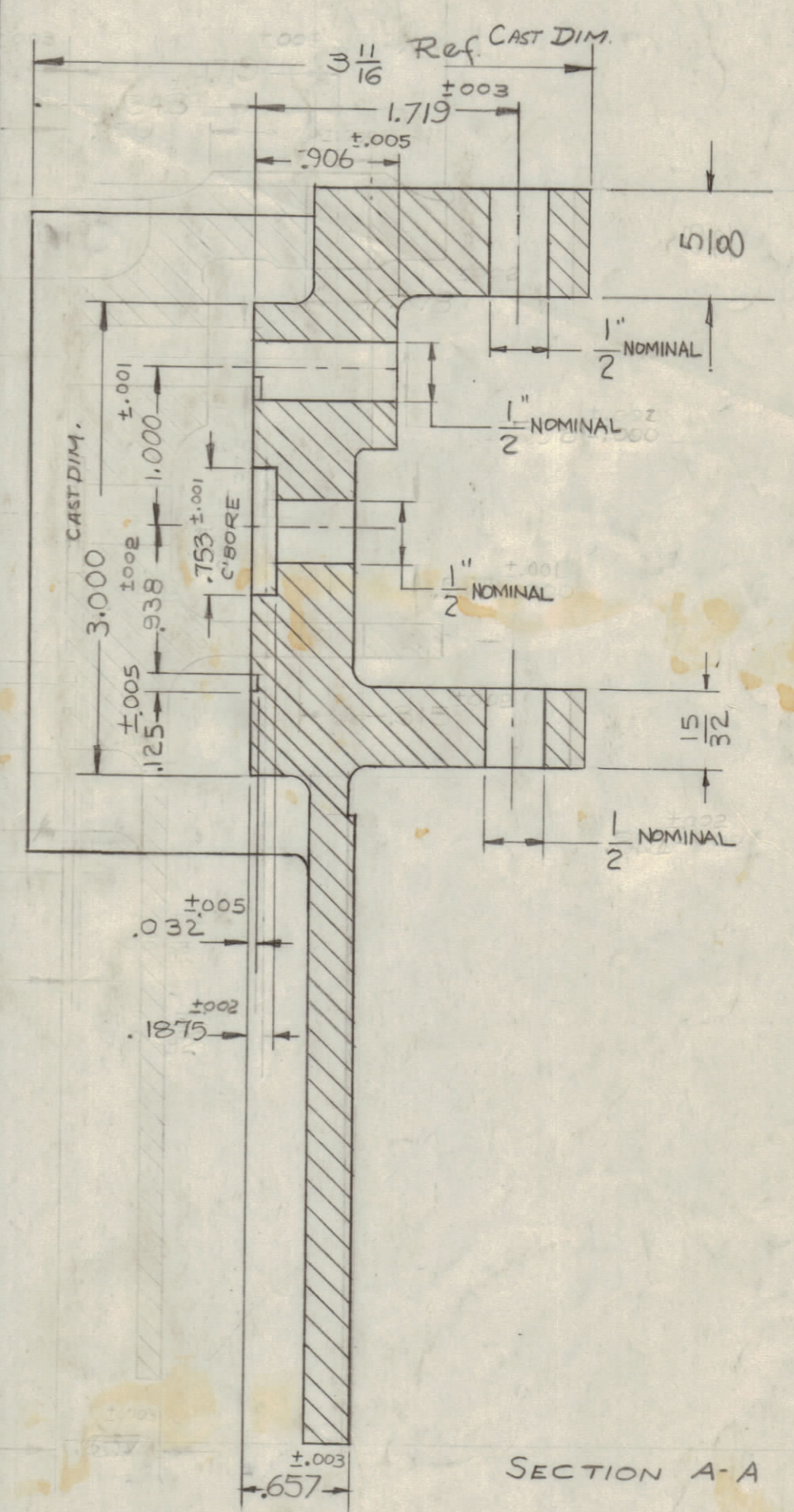
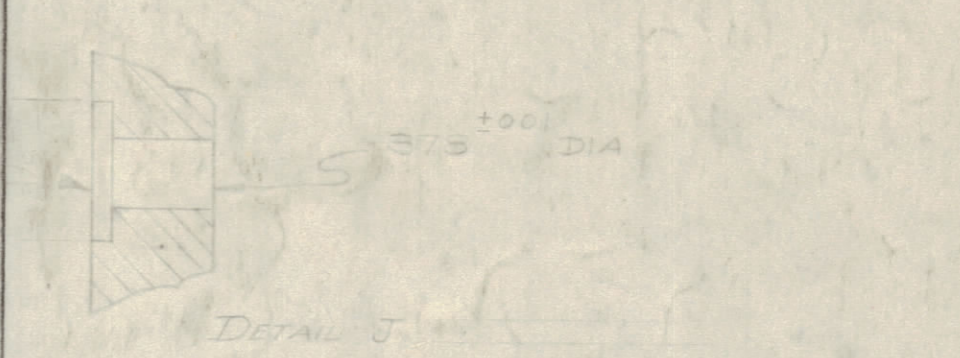
THE TECHNICAL MATERIEL CORPORATION claims proprietary right in the material disclosed hereon. This drawing is issued in confidence for engineering information only and may not be reproduced or used to manufacture anything shown hereon without permission from THE TECHNICAL MATERIEL CORPORATION to the user. This drawing is loaned for mutual assistance and is subject to recall at any time.

Property of:  
THE TECHNICAL MATERIEL CORPORATION  
MAMARONECK, NEW YORK



- E ~ DRILL & TAP 1/4"-20 x 3/4" DEEP. 7 Req
- F ~ DRILL & TAP 10-32 THRU. 4 Req
- G ~ DRILL & TAP 6-32 THRU. 4 Req
- H ~ DRILL & TAP 4-40 THRU. 2 Req
- T = SEE DETAIL J
- K ~ 1/8" DIA x 3/8" PIN 3 REQ.  
(DRILL & PIN AFTER ASS'Y)

NOTES ~ 1 ~ BANKING PTS - A & B TO BE PERPENDICULAR TO WITHIN 0.2° (12') MIN.  
2 ~ PLANES C & D (HORIZONTAL PLANE) TO BE PARALLEL TO BANKING PT. B  
3 ~ AXIS HOLES A & B TO BE PERPENDICULAR TO BANKING PT. A TO WITHIN 0.2° (12') MIN. THRU 4-37 LENGTH.  
4 ~ ALL BEARINGS TO BE (WRINGING) FIT (PRESS).



|       |      |                               |          |         |        |         |           |
|-------|------|-------------------------------|----------|---------|--------|---------|-----------|
| ISSUE | ZONE | DESCRIPTION                   | DATE     | CH. NO. | DRAFTS | CHECKER | ENG. APP. |
| C     | 1    | DELETED DIM 1.343             | 12/26/60 | 3443    | JRM    | CRG     | gjm       |
| B     | 1    | DRAWING REVISED BUILDUP ADDED | 11/11/60 | 3514    | JRM    | CRG     | gjm       |
| A     | -    | DWG. COMPLETELY REVISED       | 9-22-60  | 3018    | CU     | WLL     | JTB       |

| REQ. ITEM | PART NO. | DESCRIPTION | SYMBOL                    |
|-----------|----------|-------------|---------------------------|
| 1         | 6        | BB-118-34   | BEARING, FLANGE TYPE      |
| 1         | 5        | PM-675-2    | BEARING, PINION, MACHINED |
| 1         | 4        | PM-675-1    | BEARING, PINION, MACHINED |
| 2         | 3        | BB-118-31   | BEARING, FLANGE TYPE      |
| 2         | 2        | BB-118-32   | BEARING, FLANGE TYPE      |
| 1         | 1        | BB-123-13   | BEARING, CYLINDRICAL      |

REF-LD-983  
REF CS-125

| REQ. PER UNIT | MODEL   | SECTION | ASSY. NO. | DATE |
|---------------|---------|---------|-----------|------|
| 1             | GPT 40K | Ax-209  |           |      |